



Authorized Federal Supply Schedule Price Guide



Authorized Federal Supply Schedule Price List

Schedule Title:

Multiple Award Schedule FSC Group Furniture and Furnishings FSC Class 7110 and 7105

Commercial and Government Entity (CAGE) Code:

52612

Contract Number:

47QSMS08D0001

Contract Period:

September 3, 2013 to September 2, 2028

Contractor:

Claridge Products & Equipment, Inc.
805 Cottonwood Road
Annex 3
Harrison, AR 72601
Phone: 870-743-2200
Fax: 870-743-1908

Contract Administration Source:

North American Marketing, Inc
Lighthouse Office Suites
510 146th Street, Suite 3
Ocean City, MD 21842
Phone: 410-721-8803
Fax: 410-721-0079

Business Size:

Small Business

On-Line Access to contract ordering information, terms and conditions, up-to-date pricing, and the Option to create an electronic delivery order is available through GSA Advantage!, a menu-driven database system.

The INTERNET address for GSA Advantage! is: <http://www.gsa.gov>.



Connect X2 Mobile Display

Markerboard Tackboard Displays

- Double-sided display boards available in Calyx Glass and LCS Porcelain® writing surfaces, Calyx Cork and other tackable surfaces, and combination surface options available
- Design allows room division or nesting for convenient storage
- Writing surfaces accept magnets and enhance functionality
- Furnished with locking and non-locking casters for mobility or stationary
- Standard full height is 72" from the floor
- Full height mobiles available in widths - 30", 36", and 48"
- Satin anodized aluminum frame is available in 24 standard powder coat colors, 180 optional powder coat colors, and unlimited custom colors

See page 25

GSA TERMS & CONDITIONS

Contract Number: 47QSMS08D0001

Contract Period: September 3, 2013 to September 2, 2028

- 1a. Awarded Special Item Number:
33721
2. Maximum order: \$250,000
3. Minimum order: \$100 minimum order
4. Geographic coverage:
48 contiguous states and Washington, D.C.
5. Point of Production:
Claridge Products
805 Cottonwood Road Annex 3, Harrison, AR 72601
6. Discount from List:
66.7% off Claridge Products current commercial price list
7. Quantity discounts: None
8. Payment terms: Net 30 days
9. Government commercial credit card:
 - a) Claridge Products will accept government purchase card.
 - b) No additional discount will be offered for orders placed using the purchase card.
10. Foreign items:
All items manufactured in the USA
11. Time of delivery:
 - a) Stock items 30 days ARO,
Non-stock items 45 days ARO
 - b) Expedited time of delivery: Contact customer service
 - c) Overnight delivery: Contact customer service
 - d) Urgent requirements: Contact factory representative 870-743-2200
12. FOB Point: Origin freight prepaid & add
13. Ordering Address:
Claridge Products
805 Cottonwood Road, Annex 3
Harrison, AR 72601
Phone: 870-743-2200 Fax: 870-743-1908
14. Payment Address:
Claridge Products
805 Cottonwood Road, Annex 3
Harrison, AR 72601
15. Warranty:
Claridge Products standard commercial warranty
16. Export packaging charges: Quoted upon request
17. Terms & conditions of government commercial credit card acceptance: Claridge Products will accept the government commercial credit card but will not offer any additional discounts.
18. Terms & conditions of rental, maintenance & repair: N/A
19. Terms & conditions of Installation: N/A
20. Terms & conditions of repair parts indicating date of parts price lists and any discounts from list prices: N/A
- 20A. Terms and conditions for any other services:
Contact factory representative 870-743-2200
21. Service & Distribution points:
Contact factory representative 870-743-2200
22. Participating Dealers:
Contact: North American Marketing, Inc.
Lighthouse Office Suites
510 146th Street, Suite 3, Ocean City, MD 21842
Phone: 410-721-8803 Fax: 410-721-0079
23. Preventative maintenance: N/A
24. Special attributes such as environmental attributes:
 - a. Claridge Products will seek actively to reduce its impact on the environment to the lowest practicable level by ensuring that all operations and activities of the company employ the best practice in respect to the environment. Any threat of pollution from its activities will be identified and either eliminated or controlled effectively.
25. DUNS Number: 00-633-8099
UEI Number: KF4JFJ2LPFL3
26. Claridge Products is registered in the Central Contractor registration (CCR) database

QUALITY & SERVICE

Calyx by Claridge visual display products and accessories offer unmatched performance and high style. A state-of-the-art production facility enables our skilled team to control quality at every step in the process. In addition to offering a broad selection of standard colors, surfaces and finishes, we can custom-craft most products to perfectly suit any space or task. Let our friendly and knowledgeable customer service staff help you create exactly what you need.

Contemporary business operates at a lightning pace, so we maintain standard product lines in stock for fast shipping and delivery. For custom product orders, Calyx Priority Response and On-Time Shipping provide a firm ship date.

We also conduct a number of “green” initiatives—from in-house recycling programs to using renewable resources and alternative materials—to reduce our environmental footprint and minimize exposure to harmful substances.

At Calyx by Claridge, we work to earn your trust and satisfaction from start to finish. That’s the way we do business — today and always.

Weights in the catalog are estimates only and can vary with method of packing.

CONTENTS

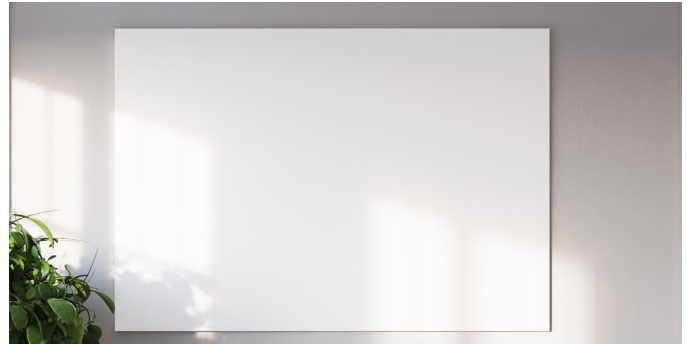
7	Magnetic and Non-Magnetic Glass Markerboard	26	Large Format Marker Systems and Tack Wall
8	Non-Glare Glass Markerboard	27	Standard Glass, LCS, and Trim Colors
9	Profile Porcelain Markerboard	28	Ombria Glass Colors
10	Cursive and Cursive:One Boards	29	Fabrics and Calyx Cork
11	Ravina Board	30	Materials and Finishes
12	MIX Wall Mounted Markerboard and Tackboard		
13	Switch and Venue Wall Mounted Markerboard	31	Legacy Products Section
14	Concept Aluminum Frame Wall-Mounted Board	31	Sliding Wall Systems
14	Motif Wood Framed Board	32	Markerboards
15	Connect X2 Boards	34	Markerboard/Tackboard Combos
16	Evolve Markerboard, Tackboard, Sliding System	35	Tackboards - Aluminum Trim
17	Trak-It Sliding System	36	Tackboards - Wood Trim
17	Xchange Graphic Board	37	Tackboards - Frameless
17	Envision Graphics Board	38	Mobile Markerboards
18	MIX Contemporary Mobile	39	Glass Door Bulletin Board Cabinets
19	MIX Industrial Mobile	43	EPH Header Panel
20	Switch and Venue V-Leg Mobile	44	Display and Trophy Cases
21	Venue T-Leg Mobile and Space Divider	48	Conference Room Tools
22	Mina Mobile and Space Creator	50	Map and Display Rails
23	Connect X2 Mobile	52	LCS Panel Additions
23	Edify Mobile	53	Accessories and Miscellaneous
24	Connect X2 Space Creator	55	Accessories
24	Ripple Divider	56	Tack Color Options
25	Aceno Collection and Nimbus	57	Frame Styles and Colors

Writing Surfaces and Standard Colors

A dry erase markerboard's effectiveness as a communication tool is only as good as its writing surface, which is the primary medium for exchanging visual information. Not all writing surfaces are equal, and the quality and composition of the material used to make them directly affect the user experience.



Invisi-Mount Calyx Glass Markerboard



Profile LCS Porcelain Markerboard

CALYX GLASS

- Unlimited Color Options
-
- Customizable Printed Graphics
-
- Erases Well, Easy to Clean
-
- Stylish, Endless Design
-
- Works with Rare Earth Magnets
-
- Non-porous surface makes it naturally bacteria resistant and easily cleanable
-
- SCS Indoor Advantage Gold Certified

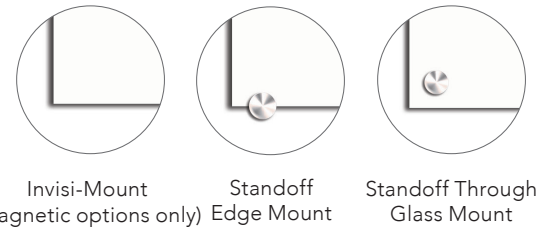
LCS PORCELAIN

- White, Light Gray, Beige Color Options
-
- Life of Building Warranty
-
- Projection Friendly
-
- Scratch and Stain Resistant
-
- Works with Magnets
-
- Non-porous surface makes it naturally bacteria resistant and easily cleanable
-
- SCS Indoor Advantage Gold Certified and Cradle-to-Cradle Certified

Glass Markerboards

Magnetic and Non-Magnetic Glass Markerboard

Calyx Glass Markerboards are stylish, functional and easy to maintain, glass markerboards add class to any environment. 1/4" thick glass is powder coated in your choice of 10 standard or over 180 optional colors. **Brilliant White is furnished if color not specified.** Custom colors and custom logos optional.



Magnetic Glass Markerboards are furnished with 4 rare-earth magnets. Calyx Glass markerboards are offered with three mounting options – stand-off edge mount, stand-off through glass mount, or invis-mount - no visible mounting hardware. Stand-off mounts come with 4 mounts for 4' widths and under; 6 mounts for 5' to 8' widths; and 8 mounts for 10' widths.

Magnetic Glass with Invisi-mount

Number	Size (HxW)	Weight	Price
MGMI-23	24" x 36"	48 lbs.	\$600
MGMI-34	36" x 48"	96 lbs.	\$1,050
MGMI-35	36" x 60"	120 lbs.	\$1,275
MGMI-44	48" x 48"	128 lbs.	\$1,320
MGMI-45	48" x 60"	160 lbs.	\$1,650
MGMI-46	48" x 72"	195 lbs.	\$1,920
MGMI-48	48" x 96"	256 lbs.	\$2,480
MGMI-410	48" x 120"	320 lbs.	\$3,000
MGMI-412	48" x 144"	384 lbs.	\$3,720
MGMI-56	60" x 72"	240 lbs.	\$2,400
MGMI-58	60" x 96"	320 lbs.	\$3,000
MGMI-510	60" x 120"	400 lbs.	\$3,750

Freight Class 70

Magnetic Glass w/ Stand-off Edge Mount

Number	Size (HxW)	Weight	Price
MGM23	24" x 36"	48 lbs.	\$720
MGM34	36" x 48"	96 lbs.	\$1,100
MGM35	36" x 60"	120 lbs.	\$1,350
MGM44	48" x 48"	128 lbs.	\$1,400
MGM45	48" x 60"	160 lbs.	\$1,750
MGM46	48" x 72"	195 lbs.	\$2,100
MGM48	48" x 96"	256 lbs.	\$2,800
MGM410	48" x 120"	320 lbs.	\$3,275
MGM412	48" x 144"	384 lbs.	\$4,175
MGM56	60" x 72"	240 lbs.	\$2,550
MGM58	60" x 96"	320 lbs.	\$3,375
MGM510	60" x 120"	400 lbs.	\$4,090

Freight Class 70

Magnetic Glass w/ Stand-off Through Glass Mount

Number	Size (HxW)	Weight	Price
MGM23-TG	24" x 36"	48 lbs.	\$1,000
MGM34-TG	36" x 48"	96 lbs.	\$1,475
MGM35-TG	36" x 60"	120 lbs.	\$1,835
MGM44-TG	48" x 48"	128 lbs.	\$1,750
MGM45-TG	48" x 60"	160 lbs.	\$1,980
MGM46-TG	48" x 72"	195 lbs.	\$2,365
MGM48-TG	48" x 96"	256 lbs.	\$3,148
MGM410-TG	48" x 120"	320 lbs.	\$3,850
MGM56-TG	60" x 72"	240 lbs.	\$2,900
MGM58-TG	60" x 96"	320 lbs.	\$3,650
MGM510-TG	60" x 120"	400 lbs.	\$4,460

Freight Class 70

Non-Magnetic Glass w/ Stand-off Edge Mount

Number	Size (HxW)	Weight	Price
PGB-23	24" x 36"	48 lbs.	\$585
PGB-34	36" x 48"	96 lbs.	\$1,020
PGB-35	36" x 60"	120 lbs.	\$1,238
PGB-44	48" x 48"	128 lbs.	\$1,280
PGB-45	48" x 60"	160 lbs.	\$1,600
PGB-46	48" x 72"	195 lbs.	\$1,860
PGB-48	48" x 96"	256 lbs.	\$2,400
PGB-410	48" x 120"	320 lbs.	\$2,900
PGB-56	60" x 72"	240 lbs.	\$2,325
PGB-58	60" x 96"	320 lbs.	\$2,900
PGB-510	60" x 120"	400 lbs.	\$3,625

Freight Class 70

Non-Magnetic Glass w/ Stand-off Through Glass Mount

Number	Size (HxW)	Weight	Price
PGB-23-TG	24" x 36"	48 lbs.	\$854
PGB-34-TG	36" x 48"	96 lbs.	\$1,193
PGB-35-TG	36" x 60"	96 lbs.	\$1,550
PGB-44-TG	48" x 48"	128 lbs.	\$1,470
PGB-45-TG	48" x 60"	160 lbs.	\$1,850
PGB-46-TG	48" x 72"	195 lbs.	\$2,100
PGB-48-TG	48" x 96"	256 lbs.	\$2,700
PGB-410-TG	48" x 120"	320 lbs.	\$3,300
PGB-56-TG	60" x 72"	240 lbs.	\$2,475
PGB-58-TG	60" x 96"	320 lbs.	\$3,300
PGB-510-TG	60" x 120"	400 lbs.	\$4,100

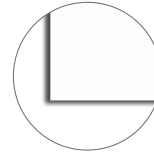
Freight Class 70

See page 55 for magnetic markerboard accessories

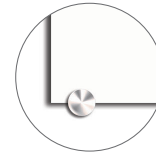
Glass Markerboards

Non-Glare Calyx Glass Markerboard

Non-Glare Calyx Glass markerboards are offered with three mounting options – stand-off edge mount, stand-off through glass mount, or invis-mount, no visible mounting hardware. 1/4" thick glass is powder coated in your choice of 10 standard or over 180 optional colors. **Brilliant White is furnished if color not specified.** Custom colors and custom logos optional.



Invisi-Mount
(Magnetic options only)



Standoff
Edge Mount



Standoff Through
Glass Mount

Magnetic Glass Markerboards are furnished with 4 rare-earth magnets. Calyx Glass markerboards are offered with three mounting options – stand-off edge mount, stand-off through glass mount, or invis-mount - no visible mounting hardware. Stand-off mounts come with 4 mounts for 4' widths and under; 6 mounts for 5' to 8' widths; and 8 mounts for 10' widths.

Magnetic Glass with Invisi-mount

Number	Size (HxW)	Weight	Price
MGMI-34-NG	36" x 48"	96 lbs.	\$2,079
MGMI-44-NG	48" x 48"	128 lbs.	\$2,772
MGMI-46-NG	48" x 72"	195 lbs.	\$4,158
MGMI-48-NG	48" x 96"	256 lbs.	\$5,376
MGMI-410-NG	48" x 120"	320 lbs.	\$6,720
MGMI-56-NG	60" x 72"	240 lbs.	\$5,040
MGMI-58-NG	60" x 96"	320 lbs.	\$6,720
MGMI-510-NG	60" x 120"	400 lbs.	\$8,400

Freight Class 70

Magnetic Glass w/ Stand-off Edge Mount

Number	Size (HxW)	Weight	Price
MGM34-NG	36" x 48"	96 lbs.	\$2,100
MGM44-NG	48" x 48"	128 lbs.	\$2,793
MGM46-NG	48" x 72"	195 lbs.	\$4,179
MGM48-NG	48" x 96"	256 lbs.	\$5,397
MGM410-NG	48" x 120"	320 lbs.	\$6,741
MGM56-NG	60" x 72"	240 lbs.	\$5,061
MGM58-NG	60" x 96"	320 lbs.	\$6,741
MGM510-NG	60" x 120"	400 lbs.	\$8,421

Freight Class 70

Magnetic Glass w/ Stand-off Through Glass Mount

Number	Size (HxW)	Weight	Price
MGM34-NG-TG	36" x 48"	96 lbs.	\$2,190
MGM44-NG-TG	48" x 48"	128 lbs.	\$2,920
MGM46-NG-TG	48" x 72"	195 lbs.	\$4,380
MGM48-NG-TG	48" x 96"	256 lbs.	\$5,840
MGM410-NG-TG	48" x 120"	320 lbs.	\$7,300
MGM56-NG-TG	60" x 72"	240 lbs.	\$4,928
MGM58-NG-TG	60" x 96"	320 lbs.	\$6,570
MGM510-NG-TG	60" x 120"	400 lbs.	\$8,213

Freight Class 70

Non-Magnetic Glass w/ Stand-off Edge Mount

Number	Size (HxW)	Weight	Price
PGB-34-NG	36" x 48"	96 lbs.	\$1,953
PGB-44-NG	48" x 48"	128 lbs.	\$2,604
PGB-46-NG	48" x 72"	195 lbs.	\$3,906
PGB-48-NG	48" x 96"	256 lbs.	\$5,208
PGB-56-NG	60" x 72"	240 lbs.	\$4,883
PGB-58-NG	60" x 96"	320 lbs.	\$6,510

Freight Class 70

Non-Magnetic Glass w/ Stand-off Through Glass Mount

Number	Size (HxW)	Weight	Price
PGB-34-NG-TG	36" x 48"	96 lbs.	\$2,100
PGB-44-NG-TG	48" x 48"	128 lbs.	\$2,920
PGB-46-NG-TG	48" x 72"	195 lbs.	\$4,410
PGB-48-NG-TG	48" x 96"	256 lbs.	\$5,880
PGB-410-NG-TG	48" x 120"	320 lbs.	\$7,350
PGB-56-NG-TG	60" x 72"	240 lbs.	\$5,080
PGB-58-NG-TG	60" x 96"	320 lbs.	\$5,950
PGB-510-NG-TG	60" x 120"	400 lbs.	\$9,188

Freight Class 70

See page 55 for magnetic markerboard accessories

Porcelain Markerboards

Profile Frameless LCS Porcelain Markerboard

Profile's incredibly smooth LCS Porcelain surface delivers a great writing experience that will stand the test of time. With simple installation and Invisi-Mount, these low profile markerboards appear to float on the wall. LCS Porcelain steel accepts magnets, won't ghost or stain, and is warrantied for life. Available in LCS White, Light Gray, or Beige color options and in 1/2" and 3/4" bevel panel thickness.

1/2" Profile with Invisi-Mount

Number	Size (HxW)	Weight	Price
FPM12-0203-Z	24" x 36"	24 lbs.	\$645
FPM12-0304-Z	36" x 48"	48 lbs.	\$900
FPM12-0404-Z	48" x 48"	64 lbs.	\$1,080
FPM12-0405-Z	48" x 60"	80 lbs.	\$1,350
FPM12-0406-Z	48" x 72"	96 lbs.	\$1,500
FPM12-0408-Z	48" x 96"	128 lbs.	\$1,850
FPM12-0504-Z	60" x 48"	80 lbs.	\$1,450
FPM12-0506-Z	60" x 72"	120 lbs.	\$1,932
FPM12-0508-Z	60" x 96"	160 lbs.	\$2,520

Freight Class 70

3/4" Profile Bevel with Invisi-Mount

Number	Size (HxW)	Weight	Price
FPM-BV-0203-Z	24" x 36"	27 lbs.	\$1,035
FPM-BV-0304-Z	36" x 48"	54 lbs.	\$1,416
FPM-BV-0403-Z	48" x 36"	54 lbs.	\$1,416
FPM-BV-0404-Z	48" x 48"	72 lbs.	\$1,711
FPM-BV-0405-Z	48" x 60"	96 lbs.	\$2,025
FPM-BV-0406-Z	48" x 72"	108 lbs.	\$2,266
FPM-BV-0408-Z	48" x 96"	144 lbs.	\$2,832

Freight Class 70



1/2" Profile



3/4" Profile Bevel

Cursive Boards

Cursive Board

The Cursive Board flows seamlessly from a tack to a writing surface or vice-versa. With stylish rounded corners, the writing surface is available in 6 standard LCS Porcelain colors or 10 standard Calyx Glass colors. Tack surface is available in 5 standard and 19 additional Calyx Acoustic colors, and 20 standard Maharam fabric colors.



Writing Surfaces

LCS Porcelain

Number	Size (HxW)	Weight	Price
CU-3648-LCS	36" x 48"	48 lbs.	\$961
CU-4848-LCS	48" x 48"	64 lbs.	\$1,100
CU-4860-LCS	48" x 60"	80 lbs.	\$1,200
CU-4872-LCS	48" x 72"	96 lbs.	\$1,367

Calyx Glass

Number	Size (HxW)	Weight	Price
CU-3648-G	36" x 48"	96 lbs.	\$1,367
CU-4848-G	48" x 48"	128 lbs.	\$1,609
CU-4860-G	48" x 60"	160 lbs.	\$2,000
CU-4872-G	48" x 72"	192 lbs.	\$2,280

Tack Surfaces

Calyx Acoustic

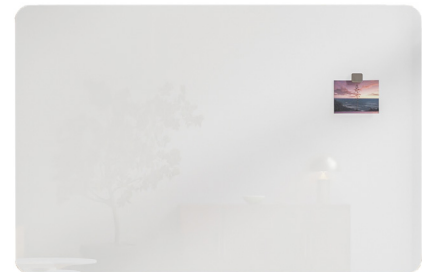
Number	Size (HxW)	Weight	Price
CU-3612-AC	36" x 12"	9 lbs.	\$322
CU-3624-AC	36" x 24"	18 lbs.	\$450
CU-4812-AC	48" x 12"	12 lbs.	\$368
CU-4824-AC	48" x 24"	24 lbs.	\$580

Fabric Wrapped

Number	Size (HxW)	Weight	Price
CU-3612-TB	36" x 12"	9 lbs.	\$289
CU-3624-TB	36" x 24"	18 lbs.	\$420
CU-4812-TB	48" x 12"	12 lbs.	\$333
CU-4824-TB	48" x 24"	24 lbs.	\$495

Cursive:One Board

The Cursive:One Board makes a stunning statement in a single writing or tack surface. With stylish rounded corners, the writing surface is available in LCS Porcelain colors and Calyx Glass colors. Tack surface is available in Calyx Acoustic, and fabric in Maharam, Guilford, and Carnegie.



Writing Surfaces

LCS Porcelain

Number	Size (HxW)	Weight	Price
CU-2436-LCS-ONE	24" x 36"	24 lbs.	\$749
CU-3648-LCS-ONE	36" x 48"	48 lbs.	\$1,048
CU-4848-LCS-ONE	48" x 48"	64 lbs.	\$1,128
CU-4860-LCS-ONE	48" x 60"	80 lbs.	\$1,308
CU-4872-LCS-ONE	48" x 72"	96 lbs.	\$1,548
CU-4896-LCS-ONE	48" x 96"	128 lbs.	\$1,925

Calyx Glass

Number	Size (HxW)	Weight	Price
CU-2436-G-ONE	24" x 36"	48 lbs.	\$960
CU-3648-G-ONE	36" x 48"	96 lbs.	\$1,340
CU-4848-G-ONE	48" x 48"	128 lbs.	\$1,630
CU-4860-G-ONE	48" x 60"	160 lbs.	\$2,150
CU-4872-G-ONE	48" x 72"	195 lbs.	\$2,270
CU-4896-G-ONE	48" x 96"	256 lbs.	\$2,720

Tack Surfaces

Calyx Acoustic

Number	Size (HxW)	Weight	Price
CU-2436-AC-ONE	24" x 36"	18 lbs.	\$739
CU-3648-AC-ONE	36" x 48"	36 lbs.	\$958
CU-4848-AC-ONE	48" x 48"	48 lbs.	\$1,118
CU-4860-AC-ONE	48" x 60"	60 lbs.	\$1,288
CU-4872-AC-ONE	48" x 72"	72 lbs.	\$1,457
CU-4896-AC-ONE	48" x 96"	96 lbs.	\$1,688

Fabric Wrapped

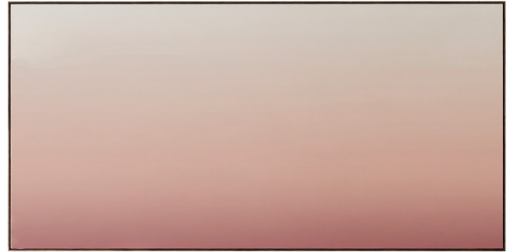
Number	Size (HxW)	Weight	Price
CU-2436-TB-ONE	24" x 36"	18 lbs.	\$879
CU-3648-TB-ONE	36" x 48"	36 lbs.	\$1,153
CU-4848-TB-ONE	48" x 48"	48 lbs.	\$1,329
CU-4860-TB-ONE	48" x 60"	60 lbs.	\$1,527
CU-4872-TB-ONE	48" x 72"	72 lbs.	\$1,703
CU-4896-TB-ONE	48" x 96"	96 lbs.	\$2,032

LCS Porcelain, Calyx Acoustic, and fabric wrapped boards are 1/2" smaller, and Calyx Glass is 1/4" smaller on all standard sizes.

Ravina Boards

Ravina Board

The Ravina wall-mounted board comes with a stylish 5/16" reveal gap between the trim and the perimeter of the board. The writing surface is available in LCS Porcelain colors and Calyx Glass colors. The trim is available in wood, chrome, or satin anodized aluminum trim. Tack surface is available with fabrics in Maharam, Guilford, and Carnegie.



Aluminum Trim

LCS Porcelain

Number	Size (HxW)	Weight	Price
RV-A-2436-LCS	25" x 37"	24 lbs.	\$699
RV-A-3648-LCS	37" x 49"	48 lbs.	\$978
RV-A-4848-LCS	49" x 49"	64 lbs.	\$1,078
RV-A-4860-LCS	49" x 61"	80 lbs.	\$1,118
RV-A-4872-LCS	49" x 73"	96 lbs.	\$1,338
RV-A-4896-LCS	49" x 97"	128 lbs.	\$1,650

Calyx Glass

Number	Size (HxW)	Weight	Price
RV-A-2436-MG	25" x 37"	48 lbs.	\$900
RV-A-3648-MG	37" x 49"	96 lbs.	\$1,390
RV-A-4848-MG	49" x 49"	128 lbs.	\$1,720
RV-A-4860-MG	49" x 61"	160 lbs.	\$2,150
RV-A-4872-MG	49" x 73"	195 lbs.	\$2,460
RV-A-4896-MG	49" x 97"	256 lbs.	\$3,100

Fabric Wrapped

Number	Size (HxW)	Weight	Price
RV-A-2436-TB	25" x 37"	15 lbs.	\$669
RV-A-3648-TB	37" x 49"	30 lbs.	\$908
RV-A-4848-TB	49" x 49"	40 lbs.	\$1,048
RV-A-4860-TB	49" x 61"	50 lbs.	\$1,218
RV-A-4872-TB	49" x 73"	60 lbs.	\$1,368
RV-A-4896-TB	49" x 97"	80 lbs.	\$1,700

Wood Trim

LCS Porcelain

Number	Size (HxW)	Weight	Price
RV-W-2436-LCS	25" x 37"	24 lbs.	\$844
RV-W-3648-LCS	37" x 49"	48 lbs.	\$1,108
RV-W-4848-LCS	49" x 49"	64 lbs.	\$1,218
RV-W-4860-LCS	49" x 61"	80 lbs.	\$1,418
RV-W-4872-LCS	49" x 73"	96 lbs.	\$1,527
RV-W-4896-LCS	49" x 97"	128 lbs.	\$1,862

Calyx Glass

Number	Size (HxW)	Weight	Price
RV-W-2436-MG	25" x 37"	48 lbs.	\$1,110
RV-W-3648-MG	37" x 49"	96 lbs.	\$1,510
RV-W-4848-MG	49" x 49"	128 lbs.	\$1,880
RV-W-4860-MG	49" x 61"	160 lbs.	\$2,350
RV-W-4872-MG	49" x 73"	195 lbs.	\$2,770
RV-W-4896-MG	49" x 97"	256 lbs.	\$3,400

Fabric Wrapped

Number	Size (HxW)	Weight	Price
RV-W-2436-TB	25" x 37"	15 lbs.	\$769
RV-W-3648-TB	37" x 49"	30 lbs.	\$1,058
RV-W-4848-TB	49" x 49"	40 lbs.	\$1,178
RV-W-4860-TB	49" x 61"	50 lbs.	\$1,438
RV-W-4872-TB	49" x 73"	60 lbs.	\$1,568
RV-W-4896-TB	49" x 97"	80 lbs.	\$1,937

MIX Wall-Mounted Markerboards

MIX Contemporary Wall-Mounted Markerboard

MIX Contemporary Markerboards are companions to the Contemporary Mobiles. See page 30 for wood frame stains options.



LCS Porcelain Markerboard

Number	Size (HxW)	Weight	Price
MXC-WM-3648-MB	36" x 48"	60 lbs.	\$2,465
MXC-WM-3660-MB	36" x 60"	75 lbs.	\$2,908
MXC-WM-4836-MB	48" x 36"	60 lbs.	\$2,408
MXC-WM-4848-MB	48" x 48"	80 lbs.	\$2,678
MXC-WM-4872-MB	48" x 72"	100 lbs.	\$3,289
MXC-WM-4896-MB	48" x 96"	120 lbs.	\$4,049

Calyx Glass Markerboard

Number	Size (HxW)	Weight	Price
MXC-WM-3648-MG	36" x 48"	84 lbs.	\$3,145
MXC-WM-3660-MG	36" x 60"	105 lbs.	\$3,853
MXC-WM-4836-MG	48" x 36"	84 lbs.	\$2,996
MXC-WM-4848-MG	48" x 48"	112 lbs.	\$3,430
MXC-WM-4872-MG	48" x 72"	140 lbs.	\$4,668
MXC-WM-4896-MG	48" x 96"	168 lbs.	\$5,548

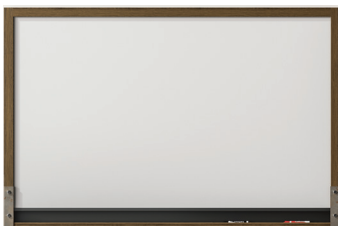
Calyx Cork Tackboard

Number	Size (HxW)	Weight	Price
MXC-WM-3648-CC	36" x 48"	84 lbs.	\$2,428
MXC-WM-3660-CC	36" x 60"	105 lbs.	\$2,942
MXC-WM-4836-CC	48" x 36"	84 lbs.	\$2,375
MXC-WM-4848-CC	48" x 48"	112 lbs.	\$2,676
MXC-WM-4872-CC	48" x 72"	140 lbs.	\$3,353
MXC-WM-4896-CC	48" x 96"	168 lbs.	\$4,175

All Freight Class 70

MIX Industrial Wall-Mounted Markerboard

MIX Industrial Markerboards are companions to the Industrial Mobiles with matching metal corner accents with exposed hex bolts in matte clear finish. See page 30 for wood frame stains options.



LCS Porcelain Markerboard

Number	Size (HxW)	Weight	Price
MXI-WM-3648-MB	36" x 48"	60 lbs.	\$2,654
MXI-WM-3660-MB	36" x 60"	75 lbs.	\$3,086
MXI-WM-4836-MB	48" x 36"	60 lbs.	\$2,599
MXI-WM-4848-MB	48" x 48"	80 lbs.	\$2,862
MXI-WM-4872-MB	48" x 72"	100 lbs.	\$3,456
MXI-WM-4896-MB	48" x 96"	120 lbs.	\$4,196

Calyx Glass Markerboard

Number	Size (HxW)	Weight	Price
MXI-WM-3648-MG	36" x 48"	84 lbs.	\$3,400
MXI-WM-3660-MG	36" x 60"	105 lbs.	\$4,108
MXI-WM-4836-MG	48" x 36"	84 lbs.	\$3,251
MXI-WM-4848-MG	48" x 48"	112 lbs.	\$3,686
MXI-WM-4872-MG	48" x 72"	140 lbs.	\$4,923
MXI-WM-4896-MG	48" x 96"	168 lbs.	\$5,803

Calyx Cork Tackboard

Number	Size (HxW)	Weight	Price
MXI-WM-3648-CC	36" x 48"	84 lbs.	\$2,557
MXI-WM-3660-CC	36" x 60"	105 lbs.	\$3,047
MXI-WM-4836-CC	48" x 36"	84 lbs.	\$2,557
MXI-WM-4848-CC	48" x 48"	112 lbs.	\$2,796
MXI-WM-4872-CC	48" x 72"	140 lbs.	\$3,438
MXI-WM-4896-CC	48" x 96"	168 lbs.	\$4,221

All Freight Class 70

Switch Markerboards

Switch Wall-Mounted Markerboard

The slim trim elements give the board a minimalistic quality with an integrated marker tray along the bottom edge of the boards. Writing surfaces available in LCS Porcelain - 6 standard colors or Calyx Glass - 10 standard colors. Frame and Marker tray comes in 10 standard colors in matte finish - see page 27. Optional acoustic and fabric wrapped TacPads available - see pages 29 and 30 for colors.



LCS Porcelain

Number	Size (HxW)	Weight	Price
SW-WM-3648-MB	36" x 48"	48 lbs.	\$825
SW-WM-3660-MB	36" x 60"	53 lbs.	\$1,021
SW-WM-3672-MB	36" x 72"	63 lbs.	\$1,073
SW-WM-3696-MB	36" x 96"	84 lbs.	\$1,329
SW-WM-4848-MB	48" x 48"	56 lbs.	\$850
SW-WM-4860-MB	48" x 60"	70 lbs.	\$1,062
SW-WM-4872-MB	48" x 72"	84 lbs.	\$1,073
SW-WM-4896-MB	48" x 96"	112 lbs.	\$1,329

Calyx Glass

Number	Size (HxW)	Weight	Price
SW-WM-3648-MG	36" x 48"	72 lbs.	\$1,826
SW-WM-3660-MG	36" x 60"	90 lbs.	\$2,601
SW-WM-3672-MG	36" x 72"	108 lbs.	\$2,889
SW-WM-3696-MG	36" x 96"	144 lbs.	\$3,582
SW-WM-4848-MG	48" x 48"	96 lbs.	\$2,057
SW-WM-4860-MG	48" x 60"	120 lbs.	\$2,889
SW-WM-4872-MG	48" x 72"	144 lbs.	\$3,120
SW-WM-4896-MG	48" x 96"	192 lbs.	\$3,183

All Freight Class 70

Calyx Acoustic TacPads

Number	Size (HxW)	Weight	Price
GS-TP-1409	14" x 9"	.5 lb.	\$295
GS-TP-2714	27" x 14"	1.5 lbs.	\$385

Calyx Fabric Wrapped TacPads

Number	Size (HxW)	Weight	Price
GS-TP-1409-EW	14" x 9"	1 lb.	\$207
GS-TP-2714-EW	27" x 14"	3 lbs.	\$277

Venue Markerboards

Venue Wall-Mounted Markerboard

The stylish frame and distinctive angled marker tray available in 8 matte finishes. Available in 8 standard sizes, custom sizes available. Writing surfaces available in LCS Porcelain - 6 standard colors or Calyx Glass - 10 standard colors. Frame and Marker tray comes in 10 standard colors in matte finish - see page 27. Optional acoustic and fabric wrapped TacPads available.



LCS Porcelain

Number	Size (HxW)	Weight	Price
VN-WM-3648-MB	36" x 48"	42 lbs.	\$688
VN-WM-3660-MB	36" x 60"	53 lbs.	\$850
VN-WM-3672-MB	36" x 72"	63 lbs.	\$1,012
VN-WM-3696-MB	36" x 96"	84 lbs.	\$1,221
VN-WM-4848-MB	48" x 48"	56 lbs.	\$850
VN-WM-4860-MB	48" x 60"	70 lbs.	\$950
VN-WM-4872-MB	48" x 72"	84 lbs.	\$1,065
VN-WM-4896-MB	48" x 96"	112 lbs.	\$1,236

Calyx Glass

Number	Size (HxW)	Weight	Price
VN-WM-3648-MG	36" x 48"	72 lbs.	\$1,200
VN-WM-3660-MG	36" x 60"	90 lbs.	\$1,687
VN-WM-3672-MG	36" x 72"	108 lbs.	\$2,025
VN-WM-3696-MG	36" x 96"	144 lbs.	\$2,640
VN-WM-4848-MG	48" x 48"	96 lbs.	\$1,600
VN-WM-4860-MG	48" x 60"	120 lbs.	\$2,000
VN-WM-4872-MG	48" x 72"	144 lbs.	\$2,400
VN-WM-4896-MG	48" x 96"	192 lbs.	\$2,960

All Freight Class 70

Aluminum Framed Boards

Concept - Aluminum Frame Board

Concept features a narrow face aluminum trim - 5/16" wide, with an eased edge. Aluminum is 1/8" thick adding depth to the trim perimeter. Markerboards are LCS Porcelain enamel steel; tackboards can be Calyx Cork, or Guilford, Carnegie and Maharam fabrics.



LCS Porcelain Markerboard

Number	Size (HxW)	Weight	Price
CP-0203-MB	24" x 36"	24 lbs.	\$285
CP-0304-MB	36" x 48"	42 lbs.	\$450
CP-0404-MB	48" x 48"	56 lbs.	\$560
CP-0405-MB	48" x 60"	70 lbs.	\$700
CP-0406-MB	48" x 72"	84 lbs.	\$772
CP-0408-MB	48" x 96"	112 lbs.	\$910
CP-0410-MB	48" x 120"	140 lbs.	\$1,188
CP-0412-MB	48" x 144"	168 lbs.	\$1,425
CP-0506-MB	60" x 72"	105 lbs.	\$1,100
CP-0508-MB	60" x 96"	140 lbs.	\$1,187
CP-0510-MB	60" x 120"	200 lbs.	\$1,700
CP-0512-MB	60" x 144"	240 lbs.	\$2,300

*If in 2 pieces, must use adhesive

Calyx Cork Tackboard

Number	Size (HxW)	Weight	Price
CP-0203-COR	24" x 36"	18 lbs.	\$250
CP-0304-COR	36" x 48"	36 lbs.	\$410
CP-0404-COR	48" x 48"	48 lbs.	\$505
CP-0405-COR	48" x 60"	60 lbs.	\$625
CP-0406-COR	48" x 72"	72 lbs.	\$741
CP-0408-COR	48" x 96"	96 lbs.	\$937

Fabric Tackboards

Number	Size (HxW)	Price Weight	Price Guilford -FG	Price Carnegie -FC	Maharam -FM
CP-0203-	24" x 36"	12 lbs.	\$250	\$299	\$320
CP-0304-	36" x 48"	24 lbs.	\$400	\$566	\$579
CP-0404-	48" x 48"	32 lbs.	\$475	\$709	\$715
CP-0406-	48" x 72"	48 lbs.	\$698	\$900	\$950
CP-0408-	48" x 96"	64 lbs.	\$876	\$1,180	\$1,245

For Guilford fabrics, specify -FG; for Carnegie, -FC; and for Maharam, -FM. Be sure to specify color required.

All Freight Class 70

Wood Framed Boards

Motif - Wood Frame Board

Motif Markerboards and Tackboards have a rounded edge profile - 1" deep with a narrow face trim. Frames available in Maple, Mahogany, Cherry, Walnut, Espresso and Ebony. Custom finishes are optional. Markerboards are LCS Porcelain enamel steel; tackboards can be Calyx Cork, or Guilford, Carnegie and Maharam fabrics.



LCS Porcelain Markerboard

Number	Size (HxW)	Weight	Price
MO-0203-MB	24" x 36"	21 lbs.	\$400
MO-0304-MB	36" x 48"	42 lbs.	\$623
MO-0404-MB	48" x 48"	56 lbs.	\$750
MO-0406-MB	48" x 72"	84 lbs.	\$1,003
MO-0408-MB	48" x 96"	112 lbs.	\$1,240

Calyx Cork Tackboard

Number	Size (HxW)	Weight	Price
MO-0203-COR	24" x 36"	20 lbs.	\$352
MO-0304-COR	36" x 48"	39 lbs.	\$588
MO-0404-COR	48" x 48"	52 lbs.	\$719
MO-0406-COR	48" x 72"	78 lbs.	\$994
MO-0408-COR	48" x 96"	104 lbs.	\$1,285

Fabric Tackboards

Number	Size (HxW)	Price Weight	Price Guilford -FG	Price Carnegie -FC	Maharam -FM
MO-0203-	24" x 36"	14 lbs.	\$378	\$457	\$388
MO-0304-	36" x 48"	27 lbs.	\$628	\$775	\$684
MO-0404-	48" x 48"	36 lbs.	\$683	\$967	\$842
MO-0406-	48" x 72"	54 lbs.	\$977	\$1,369	\$1,184
MO-0408-	48" x 96"	72 lbs.	\$1,234	\$1,785	\$1,478

For Guilford fabrics, specify -FG; for Carnegie, -FC; and for Maharam, -FM. Be sure to specify color required.

All Freight Class 70

Modular Markerboards and Tackboards

Connect X2 Board Systems

Connect X2 modular markerboards and tackboards have a thin low-profile aluminum frame. Select from: Markerboards in LCS Porcelain enamel steel or Calyx Glass; Tackboards in Calyx Cork or Carnegie, Guilford and Maharam fabrics. Can be installed individually or in groupings.



LCS Porcelain Markerboard

Number	Size (HxW)	Weight	Price Reveal	Price No-Reveal
MCS-1824-MB	18" x 24"	12 lbs.	\$520	\$400
MCS-2436-MB	24" x 36"	24 lbs.	\$700	\$480
MCS-3648-MB	36" x 48"	48 lbs.	\$1,024	\$592
MCS-4848-MB	48" x 48"	64 lbs.	\$1,250	\$720
MCS-4872-MB	48" x 72"	96 lbs.	\$1,700	\$992
MCS-4896-MB	48" x 96"	128 lbs.	\$2,150	\$1,324

For Reveal trim, specify CL-MCS; No-Reveal trim, X2-MCS

Calyx Glass Markerboard

Number	Size (HxW)	Weight	Price Reveal	Price No-Reveal
MCS-2436-MG	24" x 36"	48 lbs.	\$961	\$868
MCS-3648-MG	36" x 48"	96 lbs.	\$1,450	\$1,330
MCS-4848-MG	48" x 48"	128 lbs.	\$1,699	\$1,500
MCS-4872-MG	48" x 72"	195 lbs.	\$2,450	\$2,250
MCS-4896-MG	48" x 96"	256 lbs.	\$3,170	\$2,950

For Reveal trim, specify CL-MCS; No-Reveal trim, X2-MCS

Fabric Tackboard - With Reveal

Number	Size (HxW)	Weight	Price Guilford -FG	Price Carnegie -FC	Price Maharam -FM
CL-MCS-1824-	18" x 24"	8 lbs.	\$568	\$475	\$560
CL-MCS-2436-	24" x 36"	15 lbs.	\$580	\$550	\$595
CL-MCS-3648-	36" x 48"	30 lbs.	\$700	\$852	\$750
CL-MCS-4848-	48" x 48"	40 lbs.	\$770	\$1,030	\$901
CL-MCS-4872-	48" x 72"	60 lbs.	\$1,067	\$1,400	\$1,416
CL-MCS-4896-	48" x 96"	80 lbs.	\$1,244	\$1,550	\$1,601

Fabric Tackboard – No Reveal

Number	Size (HxW)	Price Weight	Price Guilford -FG	Price Carnegie -FC	Price Maharam -FM
X2-MCS-1824-	18" x 24"	8 lbs.	\$410	\$430	\$425
X2-MCS-2436-	24" x 36"	15 lbs.	\$460	\$510	\$498
X2-MCS-3648-	36" x 48"	30 lbs.	\$640	\$805	\$715
X2-MCS-4848-	48" x 48"	40 lbs.	\$743	\$968	\$815
X2-MCS-4872-	48" x 72"	60 lbs.	\$950	\$1,258	\$1,180
X2-MCS-4896-	48" x 96"	80 lbs.	\$1,150	\$1,642	\$1,498

For Guilford fabrics, specify -FG; for Carnegie, -FC; and for Maharam, -FM.

See fabric options on page 29. Be sure to specify color required.



Sample configurations

Calyx Cork Tackboard

Number	Size (HxW)	Weight	Price Reveal	Price No-Reveal
MCS-1824-CO	18" x 24"	11 lbs.	\$500	\$375
MCS-2436-CO	24" x 36"	21 lbs.	\$525	\$450
MCS-3648-CO	36" x 48"	42 lbs.	\$650	\$590
MCS-4848-CO	48" x 48"	56 lbs.	\$782	\$700
MCS-4872-CO	48" x 72"	84 lbs.	\$1,100	\$900
MCS-4896-CO	48" x 96"	112 lbs.	\$1,390	\$1,170

For Reveal trim, specify CL-MCS; No-Reveal trim, X2-MCS

Evolve Markerboards and Tackboards

Evolve Markerboard

Evolve Markerboards feature a smooth, low gloss LCS Porcelain surface and a unique high/low profile aluminum trim. Wide face trim at top and bottom is 2-3/8"; narrow trim at sides is 5/16". Snap-in accessory tray is designed with a lip to hold accessories; tray is 2" wide.

LCS Porcelain Markerboard

Number	Size (HxW)	Weight	Price
EV-0203-MB	24" x 36"	21 lbs.	\$327
EV-0304-MB	36" x 48"	42 lbs.	\$572
EV-0404-MB	48" x 48"	56 lbs.	\$736
EV-0405-MB	48" x 60"	70 lbs.	\$895
EV-0406-MB	48" x 72"	84 lbs.	\$965
EV-0408-MB	48" x 96"	112 lbs.	\$1,250
EV-0410-MB	48" x 120"	140 lbs.	\$1,550
EV-0412-MB	48" x 144"	168 lbs.	\$1,800

Freight Class 70



Evolve Tackboard

Evolve Tackboards feature the same contrasting high/low profile aluminum trim as Evolve markerboards – 2-3/8" wide at top and bottom, 5/16" wide on the sides. Tack surface available in Calyx Cork, or standard Carnegie, Guilford and Maharam fabrics. See page 29 for material options.

Tackboard

Number	Size (HxW)	Weight	Price
EV-0404-TB	48" x 48"	48 lbs.	\$699
EV-0406-TB	48" x 72"	72 lbs.	\$914
EV-0408-TB	48" x 96"	96 lbs.	\$1,156
EV-0504-TB	60" x 48"	60 lbs.	\$808
EV-0604-TB	72" x 48"	72 lbs.	\$1,000

Freight Class 70



Evolve Sliding System

Evolve Markerboards and Tackboards are on the move! Evolve sliders combine Evolve sliding panels with the same high/low profile 2-3/8" wide face trim at top and bottom and 5/16" narrow face trim at the sides with an affixed Evolve Markerboard. Rollers and brackets included for mounting on Evolve Markerboards or Tackboards. Use on 48" height Evolve fixed boards.

Evolve Sliding Panels

Number	Size (HxW)	Weight	Price
EVS-0403-MB	48" x 36"	42 lbs.	\$902
EVS-0404-MB	48" x 48"	56 lbs.	\$941

Freight Class 70



Trak-It System

Trak-it Panel

Double-sided panels are easy to re-arrange. Available in two sizes - 24" x 36" and 36" x 48" - with your choice of LCS Porcelain enamel steel markerboard, Calyx Cork tackboard or standard Guilford, Carnegie and Maharam fabrics - any combination. Specify type(s) of material and color(s). Panels hang portrait or landscape from optional Trak-It Rail sold in standard 10 ft. lengths. Rail not included in board price.

LCS 2 sides		LCS/Tackboard		
Number	Number	Size (HxW)	Weight	Price
TI-2436-MB-MB	TI-2436-MB-TB	24" x 36"	14 lbs.	\$443
TI-3648-MB-MB	TI-3648-MB-TB	36" x 48"	27 lbs.	\$736

Freight Class 70

For optional Trak-it tray, specify 264M1-CA and add \$59.



Tackboard 2 sides

Number	Size (HxW)	Weight	Price
TI-2436-TB-TB	24" x 36"	14 lbs.	\$496
TI-3648-TB-TB	36" x 48"	27 lbs.	\$868

Freight Class 70

Trak-It aluminum rail in 10' lengths

Number	Size	Weight	Price
TI-RAIL-10	10 lin. ft.	5 lbs.	\$175

Freight Class 70

Graphic Boards

Xchange Graphic Board

Glass markerboard includes an interchangeable graphic insert that slides easily behind clear 1/4" low-iron tempered glass writing surface. Low profile aluminum frame available in black or white powder coat finish. Available in three sizes: 18" x 24", 24" x 36", and 36" x 48".

Xchange Graphic Board

Black Frame		White Frame		Price
Number	Number	Size (HxW)	Weight	
XC1824B	XC1824W	18" x 24"	15 lbs.	\$1,035
XC2436B	XC2436W	24" x 36"	30 lbs.	\$1,150
XC3648B	XC3648W	36" x 48"	60 lbs.	\$2,352

Freight Class 70



Additional Xchange Graphic Insert

Number	Size (HxW)	Weight	Price
XCG1824	18" x 24"	1 lb.	\$850
XCG2436	24" x 36"	2 lbs.	\$950
XCG3648	36" x 48"	4 lbs.	\$1,200

Freight Class 70

Envision Graphics Board

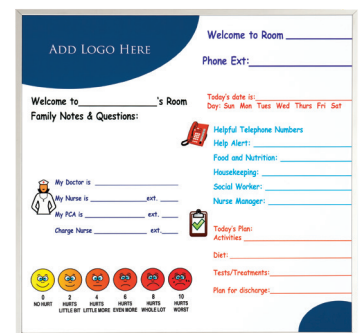
Features:

- Dry-erase markerboards with full-color, high resolution images
- 3/8" face satin anodize aluminum frame
- Z-bar clips
- Will accept magnets

Number	Size (HxW)	Weight	Price
EG1824M	18" x 24"	6 lb.	\$392
EG2023M	24" x 36"	12 lbs.	\$491
EG2034M	36" x 48"	24 lbs.	\$801
EG2044M	48" x 48"	32 lbs.	\$825
EG2046M	48" x 72"	48 lbs.	\$1,077
EG2048M	48" x 96"	64 lbs.	\$1,380

Freight Class 70

NOTE: For Envision Graphic markerboards, submit high-resolution logos or graphic file. Images or logos should be submitted in high-resolution .jpeg, .pdf, .eps, or .ai format. If usable file is unavailable, ADD \$50 NET per hour - minimum one-hour charge - for creating graphics.



MIX Mobiles

MIX Contemporary Mobile

In Calyx's MIX line of highly customizable, mixed-material mobile markerboards, you can customize nearly every markerboard component – from colors, finishes and writing surfaces to metal trays, bases and accent strips – resulting in a virtually unlimited palette that transforms your design concept into creation. MIX mobiles come in full and partial height with option to add a metal shelf to match the base on partial height mobiles. See page 30 for wood frame stain options.



Contemporary Mobile - Full Height LCS Porcelain 2 Sides

Number	Size (HxW)	Weight	Price
MXC-6036-MB-MB	72" x 36"	152 lbs.	\$3,630
MXC-6042-MB-MB	72" x 42"	164 lbs.	\$3,690
MXC-6048-MB-MB	72" x 48"	178 lbs.	\$3,740
MXC-6060-MB-MB	72" x 60"	206 lbs.	\$4,110

Contemporary Mobile - Full Height Calyx Glass 2 Sides

Number	Size (HxW)	Weight	Price
MXC-6036-MG-MG	72" x 36"	228 lbs.	\$5,417
MXC-6042-MG-MG	72" x 42"	256 lbs.	\$5,625
MXC-6048-MG-MG	72" x 48"	283 lbs.	\$5,823

Contemporary Mobile - Full Height LCS Porcelain and Calyx Cork

Number	Size (HxW)	Weight	Price
MXC-6036-MB-CC	72" x 36"	157 lbs.	\$4,000
MXC-6042-MB-CC	72" x 42"	173 lbs.	\$4,060
MXC-6048-MB-CC	72" x 48"	188 lbs.	\$4,080

Contemporary Mobile - Full Height Calyx Glass and Calyx Cork

Number	Size (HxW)	Weight	Price
MXC-6036-MG-CC	72" x 36"	189 lbs.	\$4,847
MXC-6042-MG-CC	72" x 42"	222 lbs.	\$4,981
MXC-6048-MG-CC	72" x 48"	244 lbs.	\$5,106

ADD Biophilic Panel - Serenity or Om 1 Side

Number	Size (HxW)	Weight	Price
MXC-6042-BP-MB	72" x 42"	TBD	CALL
MXC-6042-BP-MG	72" x 42"	TBD	CALL
MXC-6042-BP-CC	72" x 42"	TBD	CALL

Contemporary Mobile - Partial Height LCS Porcelain 2 Sides

Number	Size (HxW)	Weight	Price	Add Shelf
MXC-4836-MB-MB	72" x 36"	132 lbs.	\$3,320	\$324
MXC-4848-MB-MB	72" x 48"	155 lbs.	\$3,550	\$398
MXC-4860-MB-MB	72" x 60"	178 lbs.	\$3,840	\$443
MXC-4872-MB-MB	72" x 72"	201 lbs.	\$4,090	\$497

Contemporary Mobile - Partial Height Calyx Glass 2 Sides

Number	Size (HxW)	Weight	Price	Add Shelf
MXC-4836-MG-MG	72" x 36"	195 lbs.	\$4,848	\$324
MXC-4848-MG-MG	72" x 48"	239 lbs.	\$5,208	\$398
MXC-4860-MG-MG	72" x 60"	283 lbs.	\$5,823	\$443

Contemporary Mobile - Partial Height LCS Porcelain and Calyx Cork

Number	Size (HxW)	Weight	Price	Add Shelf
MXC-4836-MB-CC	72" x 36"	138 lbs.	\$3,540	\$324
MXC-4848-MB-CC	72" x 48"	163 lbs.	\$3,850	\$398
MXC-4860-MB-CC	72" x 60"	188 lbs.	\$4,210	\$443
MXC-4872-MB-CC	72" x 72"	214 lbs.	\$4,530	\$497

Contemporary Mobile - Partial Height Calyx Glass and Calyx Cork

Number	Size (HxW)	Weight	Price	Add Shelf
MXC-4836-MG-CC	72" x 36"	152 lbs.	\$4,204	\$324
MXC-4848-MG-CC	72" x 48"	196 lbs.	\$4,649	\$398
MXC-4860-MG-CC	72" x 60"	240 lbs.	\$5,195	\$443

All Freight Class 85

MIX Mobiles

MIX Industrial Mobile

MIX Industrial Mobiles feature functional exposed hex bolts and patinaed metal frames. The metal base is finished with a clear powder coating that retains the industrial flair and protects against rust and scratches. MIX mobiles come in full and partial height with option to add a metal shelf to match the base on partial height mobiles. Industrial casters come with exposed brake locks. See page 30 for wood frame stains options.



Industrial Mobile - Full Height LCS Porcelain 2 Sides

Number	Size (HxW)	Weight	Price
MXI-6036-MB-MB	72" x 36"	152 lbs.	\$3,831
MXI-6042-MB-MB	72" x 42"	164 lbs.	\$3,896
MXI-6048-MB-MB	72" x 48"	178 lbs.	\$3,946
MXI-6060-MB-MB	72" x 60"	206 lbs.	\$4,279

Industrial Mobile - Full Height Calyx Glass 2 Sides

Number	Size (HxW)	Weight	Price
MXI-6036-MG-MG	72" x 36"	228 lbs.	\$5,472
MXI-6042-MG-MG	72" x 42"	256 lbs.	\$5,678
MXI-6048-MG-MG	72" x 48"	283 lbs.	\$5,877

Industrial Mobile - Full Height LCS Porcelain and Calyx Cork

Number	Size (HxW)	Weight	Price
MXI-6036-MB-CC	72" x 36"	157 lbs.	\$4,168
MXI-6042-MB-CC	72" x 42"	173 lbs.	\$4,245
MXI-6048-MB-CC	72" x 48"	188 lbs.	\$4,245

Industrial Mobile - Full Height Calyx Glass and Calyx Cork

Number	Size (HxW)	Weight	Price
MXI-6036-MG-CC	72" x 36"	189 lbs.	\$4,899
MXI-6042-MG-CC	72" x 42"	222 lbs.	\$5,035
MXI-6048-MG-CC	72" x 48"	244 lbs.	\$5,160

ADD Biophilic Panel - Serenity or Om 1 Side

Number	Size (HxW)	Weight	Price
MXI-6042-BP-MB	72" x 42"	TBD	CALL
MXI-6042-BP-MG	72" x 42"	TBD	CALL
MXI-6042-BP-CC	72" x 42"	TBD	CALL

Industrial Mobile - Partial Height LCS Porcelain 2 Sides

Number	Size (HxW)	Weight	Price	Add Shelf
MXI-4836-MB-MB	72" x 36"	132 lbs.	\$3,718	\$324
MXI-4848-MB-MB	72" x 48"	155 lbs.	\$3,964	\$398
MXI-4860-MB-MB	72" x 60"	178 lbs.	\$4,263	\$443
MXI-4872-MB-MB	72" x 72"	201 lbs.	\$4,526	\$497

Industrial Mobile - Partial Height Calyx Glass 2 Sides

Number	Size (HxW)	Weight	Price	Add Shelf
MXI-4836-MG-MG	72" x 36"	195 lbs.	\$4,932	\$324
MXI-4848-MG-MG	72" x 48"	239 lbs.	\$5,478	\$398
MXI-4860-MG-MG	72" x 60"	283 lbs.	\$6,170	\$443

Industrial Mobile - Partial Height LCS Porcelain and Calyx Cork

Number	Size (HxW)	Weight	Price	Add Shelf
MXI-4836-MB-CC	72" x 36"	138 lbs.	\$3,899	\$324
MXI-4848-MB-CC	72" x 48"	163 lbs.	\$4,213	\$398
MXI-4860-MB-CC	72" x 60"	188 lbs.	\$4,527	\$443
MXI-4872-MB-CC	72" x 72"	214 lbs.	\$4,843	\$497

Industrial Mobile - Partial Height Calyx Glass and Calyx Cork

Number	Size (HxW)	Weight	Price	Add Shelf
MXI-4836-MG-CC	72" x 36"	152 lbs.	\$4,473	\$324
MXI-4848-MG-CC	72" x 48"	196 lbs.	\$4,919	\$398
MXI-4860-MG-CC	72" x 60"	240 lbs.	\$5,465	\$443

All Freight Class 85

Mobile Markerboards

Switch Mobile

Switch double-sided mobiles are available in your choice of LCS Porcelain enamel steel or Calyx Glass writing surfaces with an integrated marker tray along the bottom edge of the board. 60" or 72" height and widths in 36", 42", 48", and 60". Comes with 2 locking and 2 non-locking Hubless Casters for easy mobility. Standard matte color options on page 27. Optional tackable surfaces available.



LCS Porcelain

Number	Size (HxW)	Weight	Price
SW-6036-MB-MB	60" x 36"	86 lbs.	\$3,170
SW-6042-MB-MB	60" x 42"	95 lbs.	\$3,295
SW-6048-MB-MB	60" x 48"	103 lbs.	\$3,307
SW-6060-MB-MB	60" x 60"	109 lbs.	\$3,582
SW-7236-MB-MB	72" x 36"	92 lbs.	\$3,444
SW-7242-MB-MB	72" x 42"	102 lbs.	\$3,469
SW-7248-MB-MB	72" x 48"	111 lbs.	\$3,494
SW-7260-MB-MB	72" x 60"	119 lbs.	\$3,732

Freight Class 85

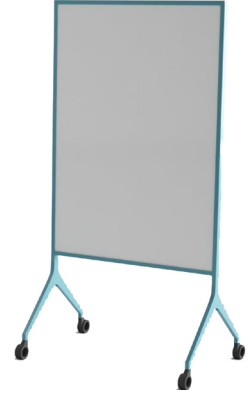
Calyx Glass

Number	Size (HxW)	Weight	Price
SW-6036-MG-MG	60" x 36"	105 lbs.	\$4,428
SW-6042-MG-MG	60" x 42"	122 lbs.	\$4,740
SW-6048-MG-MG	60" x 48"	133 lbs.	\$4,956
SW-6060-MG-MG	60" x 60"	147 lbs.	\$5,604
SW-7236-MG-MG	72" x 36"	122 lbs.	\$5,064
SW-7242-MG-MG	72" x 42"	137 lbs.	\$5,352
SW-7248-MG-MG	72" x 48"	151 lbs.	\$5,604
SW-7260-MG-MG	72" x 60"	169 lbs.	\$6,312

Freight Class 85

Venue V-Leg Mobile

The Venue V-Leg double-sided mobile has an upright design with board surface starting approximately 18" from the floor. Available in your choice of LCS Porcelain or Calyx Glass writing surfaces, and optional acoustic and fabric wrapped TacPads. 60" or 72" height and widths in 36", 42", 48", and 60". Comes with 2 locking and 2 non-locking Hubless Casters for easy mobility. Standard matte color options on page 27. Optional tackable surfaces available.



LCS Porcelain

Number	Size (HxW)	Weight	Price
VN-V-6036-MB-MB	60" x 36"	86 lbs.	\$2,808
VN-V-6042-MB-MB	60" x 42"	91 lbs.	\$2,908
VN-V-6048-MB-MB	60" x 48"	97 lbs.	\$2,970
VN-V-6060-MB-MB	60" x 60"	108 lbs.	\$3,157
VN-V-7236-MB-MB	72" x 36"	92 lbs.	\$3,132
VN-V-7242-MB-MB	72" x 42"	98 lbs.	\$3,145
VN-V-7248-MB-MB	72" x 48"	105 lbs.	\$3,157
VN-V-7260-MB-MB	72" x 60"	118 lbs.	\$3,682

Freight Class 85

Calyx Glass

Number	Size (HxW)	Weight	Price
VN-V-6036-MG-MG	60" x 36"	116 lbs.	\$4,092
VN-V-6042-MG-MG	60" x 42"	136 lbs.	\$4,380
VN-V-6048-MG-MG	60" x 48"	142 lbs.	\$4,620
VN-V-6060-MG-MG	60" x 60"	150 lbs.	\$5,208
VN-V-7236-MG-MG	72" x 36"	128 lbs.	\$4,740
VN-V-7242-MG-MG	72" x 42"	150 lbs.	\$5,016
VN-V-7248-MG-MG	72" x 48"	158 lbs.	\$5,268
VN-V-7260-MG-MG	72" x 60"	170 lbs.	\$5,940

Freight Class 85

Calyx Acoustic TacPads

Number	Size (HxW)	Weight	Price
GS-TP-1409	14" x 9"	.5 lb.	\$295
GS-TP-2714	27" x 14"	1.5 lbs.	\$385

Calyx Fabric Wrapped TacPads

Number	Size (HxW)	Weight	Price
GS-TP-1409-EW	14" x 9"	1 lb.	\$207
GS-TP-2714-EW	27" x 14"	3 lbs.	\$277

Mobile Markerboards and Space Dividers

Venue T-Leg Mobile

The Venue T-Leg double-sided mobile has a lower profile design with board surface starting approximately 10" from the floor for convenient nesting. Available in full or split panels with in your choice of LCS Porcelain or Calyx Glass writing surfaces, and optional acoustic and fabric wrapped TacPads. 60" or 72" height and widths in 36", 42", 48", and 60". Comes with 2 locking and 2 non-locking Hubless Casters for easy mobility. Standard matte color options on page 27. Optional tackable surfaces available.



LCS Porcelain

Number	Size (HxW)	Weight	Price
VN-T-6036-MB-MB	60" x 36"	92 lbs.	\$2,468
VN-T-6042-MB-MB	60" x 42"	98 lbs.	\$2,478
VN-T-6048-MB-MB	60" x 48"	105 lbs.	\$2,599
VN-T-6060-MB-MB	60" x 60"	118 lbs.	\$2,930
VN-T-7236-MB-MB	72" x 36"	98 lbs.	\$2,520
VN-T-7242-MB-MB	72" x 42"	105 lbs.	\$2,675
VN-T-7248-MB-MB	72" x 48"	113 lbs.	\$2,646
VN-T-7260-MB-MB	72" x 60"	128 lbs.	\$3,129

Freight Class 85

Calyx Glass

Number	Size (HxW)	Weight	Price
VN-T-6036-MG-MG	60" x 36"	128 lbs.	\$3,896
VN-T-6042-MG-MG	60" x 42"	150 lbs.	\$4,106
VN-T-6048-MG-MG	60" x 48"	158 lbs.	\$4,305
VN-T-6060-MG-MG	60" x 60"	170 lbs.	\$4,956
VN-T-7236-MG-MG	72" x 36"	140 lbs.	\$4,337
VN-T-7242-MG-MG	72" x 42"	164 lbs.	\$4,536
VN-T-7248-MG-MG	72" x 48"	174 lbs.	\$5,056
VN-T-7260-MG-MG	72" x 60"	190 lbs.	\$5,744

Freight Class 85

Calyx Acoustic TacPads

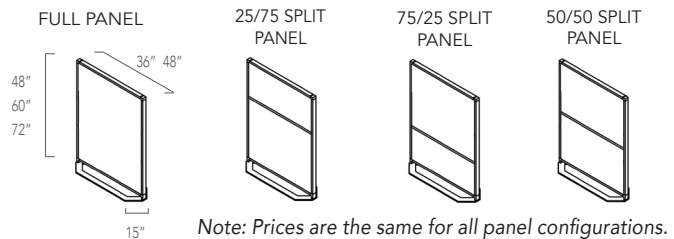
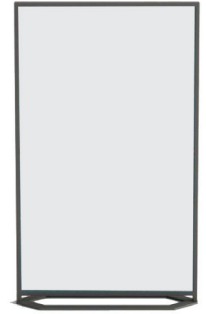
Number	Size (HxW)	Weight	Price
GS-TP-1409	14" x 9"	.5 lb.	\$295
GS-TP-2714	27" x 14"	1.5 lbs.	\$385

Calyx Fabric Wrapped TacPads

Number	Size (HxW)	Weight	Price
GS-TP-1409-EW	14" x 9"	1 lb.	\$207
GS-TP-2714-EW	27" x 14"	3 lbs.	\$277

Venue Space Divider

Venue Space Dividers are available in your choice of LCS Porcelain or Calyx Glass writing surfaces, and Calyx Acoustic Panels in two widths - 36" and 48"; three heights - 48", 60" and 72" panel configurations in full, 25/75 split, 75/25 split, and 50/50 split panels. Standard matte color options on page 27. See Acoustic colors on page 30.



LCS Porcelain and Acoustic

Number	Size (HxW)	Weight	Price
VN-SC-4848-16T28B-MB-GS	48" x 48"	90 lbs.	\$3,925
VN-SC-4848-28T16B-MB-GS	48" x 48"	90 lbs.	\$3,839
VN-SC-6036-28T28B-MB-GS	60" x 36"	80 lbs.	\$4,105
VN-SC-6048-28T28B-MB-GS	60" x 48"	106 lbs.	\$4,156
VN-SC-7236-40T28B-MB-GS	72" x 36"	92 lbs.	\$4,141
VN-SC-7236-28T40B-MB-GS	72" x 36"	92 lbs.	\$4,050
VN-SC-7248-40T28B-MB-GS	72" x 48"	122 lbs.	\$4,230
VN-SC-7248-28T40B-MB-GS	72" x 48"	122 lbs.	\$4,352

Freight Class 85

Calyx Glass and Acoustic

Number	Size (HxW)	Weight	Price
VN-SC-4848-16T28B-MG-GS	48" x 48"	106 lbs.	\$4,703
VN-SC-4848-28T16B-MG-GS	48" x 48"	106 lbs.	\$4,800
VN-SC-6036-28T28B-MG-GS	60" x 36"	95 lbs.	\$4,650
VN-SC-6048-28T28B-MG-GS	60" x 48"	126 lbs.	\$5,009
VN-SC-7236-40T28B-MG-GS	72" x 36"	110 lbs.	\$5,226
VN-SC-7236-28T40B-MG-GS	72" x 36"	110 lbs.	\$4,905
VN-SC-7248-40T28B-MG-GS	72" x 48"	146 lbs.	\$5,600
VN-SC-7248-28T40B-MG-GS	72" x 48"	146 lbs.	\$5,500

Freight Class 85

Calyx Acoustic

Number	Size (HxW)	Weight	Price
VN-SC-4848-16T28B-GS-GS	48" x 48"	74 lbs.	\$3,805
VN-SC-4848-28T16B-GS-GS	48" x 48"	74 lbs.	\$3,805
VN-SC-6036-28T28B-GS-GS	60" x 36"	65 lbs.	\$4,065
VN-SC-6048-28T28B-GS-GS	60" x 48"	86 lbs.	\$4,115
VN-SC-7236-40T28B-GS-GS	72" x 36"	74 lbs.	\$4,366
VN-SC-7236-28T40B-GS-GS	72" x 36"	74 lbs.	\$4,366
VN-SC-7248-40T28B-GS-GS	72" x 48"	98 lbs.	\$4,404
VN-SC-7248-28T40B-GS-GS	72" x 48"	98 lbs.	\$4,404

Freight Class 85

Mina Mobiles and Space Creators

Mina Mobile

Mina Mobile's frameless board is supported by sleek extended feet on each side for a truly minimalist design. Panels are double sided with option to choose from both writing surfaces in LCS Porcelain or Calyx Glass; or both tack surfaces in Calyx Acoustic or fabric wrapped. Comes with 2 locking and 2 non-locking casters. Sizes available in 60" or 72" height with 36" or 42" width.



Writing Surfaces

LCS Porcelain

Number	Size (HxW)	Weight	Price
MI-MM-6036-LCS	60" x 36"	81 lbs.	\$2,905
MI-MM-6042-LCS	60" x 42"	90 lbs.	\$2,916
MI-MM-7236-LCS	72" x 36"	92 lbs.	\$3,130
MI-MM-7242-LCS	72" x 42"	104 lbs.	\$3,141

Magnetic Glass

Number	Size (HxW)	Weight	Price
MI-MM-6036-MG	60" x 36"	85 lbs.	\$4,656
MI-MM-6042-MG	60" x 42"	95 lbs.	\$4,867
MI-MM-7236-MG	72" x 36"	96 lbs.	\$4,944
MI-MM-7242-MG	72" x 42"	108 lbs.	\$5,194

Non-Magnetic Glass

Number	Size (HxW)	Weight	Price
MI-MM-6036-PGB	60" x 36"	85 lbs.	\$4,483
MI-MM-6042-PGB	60" x 42"	95 lbs.	\$4,675
MI-MM-7236-PGB	72" x 36"	96 lbs.	\$4,733
MI-MM-7242-PGB	72" x 42"	108 lbs.	\$4,963

Tack Surfaces

Calyx Acoustic

Number	Size (HxW)	Weight	Price
MI-MM-6036-AC	60" x 36"	50 lbs.	\$3,295
MI-MM-6042-AC	60" x 42"	55 lbs.	\$3,304
MI-MM-7236-AC	72" x 36"	56 lbs.	\$3,494
MI-MM-7242-AC	72" x 42"	61 lbs.	\$3,504

Fabric Wrapped

Number	Size (HxW)	Weight	Price
MI-MM-6036-TB	60" x 36"	50 lbs.	\$3,315
MI-MM-6042-TB	60" x 42"	55 lbs.	\$3,324
MI-MM-7236-TB	72" x 36"	56 lbs.	\$3,515
MI-MM-7242-TB	72" x 42"	61 lbs.	\$3,524

Mina Space Creator

Mina Space Creator's frameless slim design allows more workable space with the panel of your choice.



Writing Surfaces

LCS Porcelain

Number	Size (HxW)	Weight	Price
MI-SC-6036-LCS	60" x 36"	81 lbs.	\$3,304
MI-SC-6042-LCS	60" x 42"	90 lbs.	\$3,494
MI-SC-7236-LCS	72" x 36"	92 lbs.	\$3,504
MI-SC-7242-LCS	72" x 42"	104 lbs.	\$3,604

Magnetic Glass

Number	Size (HxW)	Weight	Price
MI-SC-6036-MG	60" x 36"	85 lbs.	\$4,598
MI-SC-6042-MG	60" x 42"	95 lbs.	\$4,819
MI-SC-7236-MG	72" x 36"	96 lbs.	\$4,877
MI-SC-7242-MG	72" x 42"	108 lbs.	\$5,146

Non-Magnetic Glass

Number	Size (HxW)	Weight	Price
MI-SC-6036-PGB	60" x 36"	85 lbs.	\$4,416
MI-SC-6042-PGB	60" x 42"	95 lbs.	\$4,618
MI-SC-7236-PGB	72" x 36"	96 lbs.	\$4,666
MI-SC-7242-PGB	72" x 42"	108 lbs.	\$4,906

Tack Surfaces

Calyx Acoustic

Number	Size (HxW)	Weight	Price
MI-SC-6036-AC	60" x 36"	50 lbs.	\$3,135
MI-SC-6042-AC	60" x 42"	55 lbs.	\$3,145
MI-SC-7236-AC	72" x 36"	56 lbs.	\$3,345
MI-SC-7242-AC	72" x 42"	61 lbs.	\$3,354

Fabric Wrapped

Number	Size (HxW)	Weight	Price
MI-SC-6036-TB	60" x 36"	50 lbs.	\$3,155
MI-SC-6042-TB	60" x 42"	55 lbs.	\$3,165
MI-SC-7236-TB	72" x 36"	56 lbs.	\$3,365
MI-SC-7242-TB	72" x 42"	61 lbs.	\$3,374

Connect X2 Mobiles

Connect X2 Full Height Mobile

Available in your choice of LCS Porcelain enamel steel or Calyx Glass writing surface in five widths - 30", 36", 42", 48" and 60". Unit is approx. 72" tall; full height markerboard. 2 locking and 2 non-locking casters. Ganging option available.



Full Height LCS Porcelain Mobile

Number	Size (HxW)	Weight	Price
X2-MM-7230-MB-MB	72" x 30"	110 lbs.	\$2,360
X2-MM-7236-MB-MB	72" x 36"	128 lbs.	\$2,475
X2-MM-7242-MB-MB	72" x 42"	147 lbs.	\$2,750
X2-MM-7248-MB-MB	72" x 48"	165 lbs.	\$2,850
X2-MM-7260-MB-MB	72" x 60"	200 lbs.	\$3,214

Freight Class 85

Full Height Calyx Glass Mobile

Number	Size (HxW)	Weight	Price
X2-MM-7230-MG-MG	72" x 30"	140 lbs.	\$3,996
X2-MM-7236-MG-MG	72" x 36"	160 lbs.	\$4,125
X2-MM-7242-MG-MG	72" x 42"	205 lbs.	\$4,591
X2-MM-7248-MG-MG	72" x 48"	230 lbs.	\$4,850
X2-MM-7260-MG-MG	72" x 60"	290 lbs.	\$5,300

Freight Class 85

NOTE: Powder coat option additional \$158.

Connect X2 Mobiles double-sided surface is available with any combination of markerboard, tackboard, and/or glass markerboard. Call for pricing.

Edify Mobile

Edify Mobile

Edify Mobile features a sturdy steel frame with tray, and optional bin or shelf available in vibrant color options. Interchangeable lapboards are also available for added collaboration. Available in LCS Porcelain writing surface; 2 locking and 2 non-locking casters. Standard height is 72" from the floor.



Edify Mobile and Options

Number	Size (HxW)	Weight	Price
EM-MB-MB-7236	72" x 36"	80 lbs.	\$2,101
EM-MB-MB-7248	72" x 48"	108 lbs.	\$2,132
EM-36-BIN	36" width	19 lbs.	ADD \$470
EM-48-BIN	48" width	25 lbs.	ADD \$500
EM-36-SHF	36" width	9 lbs.	ADD \$239
EM-48-SHF	48" width	12 lbs.	ADD \$254
EM-LAPBOARD (4)	12" x 10"	5 lbs.	ADD \$200

Freight Class 85

Connect X2 Partial Height Mobile

Available in LCS Porcelain enamel steel in two widths - 36" and 48". Unit is approx. 72" tall; markerboard is 36" high. 2 locking and 2 non-locking casters.



Partial Height LCS Porcelain Mobile

Number	Size (HxW)	Weight	Price
X2-MMN-7236-MB-MB	72" x 36"	80 lbs.	\$2,013
X2-MMN-7248-MB-MB	72" x 48"	95 lbs.	\$2,070

Freight Class 85

Connect X2 Combination Markerboard/Tackboard Mobile

Available with LCS Porcelain on top and Calyx Cork on bottom (specify cork color). Specify height for markerboard and tack surface. Available in two widths - 36" and 48". Unit is 72" tall. Locking and non-locking casters.



LCS Porcelain Markerboard/Tackboard Mobile

Number	Size (HxW)	Weight	Price
X2-MMNT-7236-MB-MB	72" x 36"	116 lbs.	\$2,437
X2-MMNT-7248-MB-MB	72" x 48"	130 lbs.	\$2,801

Freight Class 85

Connect X2 3 Caster Mobile

Connect X2 Series Double-Sided 3 Caster Mobile markerboards are available in LCS Porcelain enamel steel writing surface in two widths - 36" and 48". Unit is approx. 72" tall; full height markerboard. Locking and non-locking casters. Designed for use between work stations.



LCS Porcelain 3 Caster Mobile

Number	Size (HxW)	Weight	Price
X2-MM3-7236-MB-MB	72" x 36"	128 lbs.	\$2,638
X2-MM3-7248-MB-MB	72" x 48"	165 lbs.	\$2,715

Freight Class 85

Utility A-Frame Mobile

A-Frame Utility Mobile Markerboard features full-length LCS Porcelain enamel steel writing surface on both sides. Unit has black powder coat finish aluminum frame. Display rail at top has hooks for use with flip charts. Markerboard is 66"H x 30"W.



Number	Size (HxW)	Weight	Price
147	72" x 30"	120 lbs.	\$2,774

Freight Class 85

Connect X2 Space Creators

Connect X2 Space Creator

Connect Space Creators panels are tiled to create a custom markerboard and/or tack surface. Furnished with two pie-shaped feet and a link for joining two or more Space Creators together. LCS Porcelain writing surface or standard Guilford, Carnegie or Maharam fabric tack surfaces. For configurations using a combination of materials from panel-to-panel or side-to-side, use the price of the higher material. All Space Creators are 72" high and come in 30", 36", 48" and 60" widths.

NOTE: Powder coat option additional \$158.



Fabric 2 sides

72" high x 30" wide

No. of Tiles	Number	Weight	Price Guilford -FG-FG	Price Carnegie -FC-FC	Price Maharam -FM-FM
1-tile	X2-SC-7230-1-	87 lbs.	\$2,149	\$2,791	\$2,570
2-tiles	X2-SC-7230-2-	87 lbs.	\$2,230	\$2,871	\$2,650
3-tiles	X2-SC-7230-3-	87 lbs.	\$2,311	\$2,951	\$2,730
4-tiles	X2-SC-7230-4-	87 lbs.	\$2,392	\$3,067	\$2,800

72" high x 36" wide

No. of Tiles	Number	Weight	Price Guilford -FG-FG	Price Carnegie -FC-FC	Price Maharam -FM-FM
1-tile	X2-SC-7236-1-	99 lbs.	\$2,171	\$2,850	\$2,650
2-tiles	X2-SC-7236-2-	99 lbs.	\$2,251	\$2,930	\$2,730
3-tiles	X2-SC-7236-3-	99 lbs.	\$2,335	\$3,010	\$2,800
4-tiles	X2-SC-7236-4-	99 lbs.	\$2,430	\$3,090	\$2,880

72" high x 48" wide

No. of Tiles	Number	Weight	Price Guilford -FG-FG	Price Carnegie -FC-FC	Price Maharam -FM-FM
1-tile	X2-SC-7248-1-	123 lbs.	\$2,367	\$2,910	\$2,750
2-tiles	X2-SC-7248-2-	123 lbs.	\$2,448	\$2,990	\$2,830
3-tiles	X2-SC-7248-3-	123 lbs.	\$2,529	\$3,070	\$2,910
4-tiles	X2-SC-7248-4-	123 lbs.	\$2,610	\$3,150	\$2,990

For Guilford fabrics, specify -FG; for Carnegie, -FC; and for Maharam, -FM. See page 29 for material options. Be sure to specify color required.

LCS Porcelain 2 sides

72" high x 30" wide

No. of Tiles	Number	Weight	Price
1-tile	X2-SC-7230-1-MB-MB	117 lbs.	\$2,139
2-tiles	X2-SC-7230-2-MB-MB	117 lbs.	\$2,213
3-tiles	X2-SC-7230-3-MB-MB	117 lbs.	\$2,293
4-tiles	X2-SC-7230-4-MB-MB	117 lbs.	\$2,409

72" high x 36" wide

No. of Tiles	Number	Weight	Price
1-tile	X2-SC-7236-1-MB-MB	135 lbs.	\$2,150
2-tiles	X2-SC-7236-2-MB-MB	135 lbs.	\$2,230
3-tiles	X2-SC-7236-3-MB-MB	135 lbs.	\$2,288
4-tiles	X2-SC-7236-4-MB-MB	135 lbs.	\$2,410

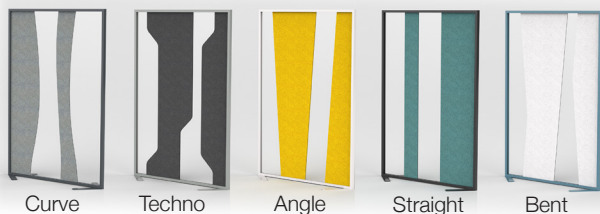
72" high x 48" wide

No. of Tiles	Number	Weight	Price
1-tile	X2-SC-7248-1-MB-MB	171 lbs.	\$2,178
2-tiles	X2-SC-7248-2-MB-MB	171 lbs.	\$2,299
3-tiles	X2-SC-7248-3-MB-MB	171 lbs.	\$2,685
4-tiles	X2-SC-7248-4-MB-MB	171 lbs.	\$2,739

All Freight Class 70

Ripple Space Dividers

A stylish space divider using both Calyx Acoustic and Clear Acrylic surfaces. Featuring a low profile trim, to-the-floor privacy and the ability to create and reconfigure space with decorative graphic panels. Available in 5 styles and 8 size options.



No. of Panels	Number	Size	Price
4	RD-RIP1-7236-4P	72" x 36"	\$2,417
4	RD-RIP1-7242-4P	72" x 42"	\$2,438
4	RD-RIP1-7248-4P	72" x 48"	\$2,555
5	RD-RIP1-7260-5P	72" x 60"	\$2,760
4	RD-RIP1-6036-4P	60" x 36"	\$2,375
4	RD-RIP1-6042-4P	60" x 42"	\$2,396
4	RD-RIP1-6048-4P	60" x 48"	\$2,514
5	RD-RIP1-6060-5P	60" x 60"	\$2,719

Specify the following product numbers for the 5 styles:

RD-RIP1- for Curve, RD-RIP2- for Techno, RD-RIP3- for Angle, RD-RIP4- for Straight, RD-RIP5- for Bent

Aceno Collection and Nimbus

Aceno Room Divider

Aceno Room Dividers are the lightest panels that can be easily moved and mounted from the floor in a steady metal base. Panels are composed of CIS writing surface with Calyx Acoustic core reveal. Panel sizes available in three heights - 48", 55", and 68", and two widths - 28" and 36". CIS surface comes in standard white.



Aceno Panels

Number	Size (HxW)	Weight	Price
ACP-4828	48" x 28"	10 lbs.	\$800
ACP-4836	48" x 36"	12 lbs.	\$926
ACP-5528	55" x 28"	11 lbs.	\$1,278
ACP-5536	55" x 36"	14 lbs.	\$1,285
ACP-6828	68" x 28"	13 lbs.	\$1,607
ACP-6836	68" x 36"	17 lbs.	\$1,614

Freight Class 85

Aceno Base

Number	Size (HxWxD)	Weight	Price
ACB	10-1/4" x 15" x 15"	24 lbs.	\$599

Aceno Track System

Aceno Track System comes standard in satin anodize trim and is available in 10 standard matte finish colors.

Optional back panel is available in Calyx Glass or LCS porcelain; no back panel required for functionality. Comes in three lengths - 48", 72", or 96".



Aceno Track Rails

Number	Size (W)	Weight	Price
ACT-04	48"	13 lbs.	\$444
ACT-06	72"	20 lbs.	\$597
ACT-08	96"	26 lbs.	\$761

Aceno Storage Cart

Aceno Cart is constructed in solid wood frame to store the Aceno panels and to use as a mobile markerboard. The cart can store up to 8 panels and is moveable with round cut-out handles. Comes with 2 locking and 2 non-locking casters. Calyx Acoustic is available as option on cart side panels.



Aceno Cart

Number	Size (HxWxD)	Weight	Price
ACM	45" x 40" x 21"	125 lbs.	\$3,450

Nimbus Multi-Purpose Mobile

Multi-purpose markerboard mobile featuring our best in class LCS Porcelain writing surface or tack surface, and center storage space to keep accessories for collaboration on the move. Center shelves accessible from both sides with cord management. Comes with 2 locking and 2 non-locking casters.



Nimbus Cart

Number	Size (HxWxD)	Weight	Price
NIM	60" x 40" x 19"	110 lbs.	\$3,850

Large Format Wall Systems

Large Format Glass Marker System

Extremely durable, virtually maintenance free, Large Format Glass Marker Systems are made of low-iron tempered glass for exceptional clarity. Your choice of 10 standard colors or 180 optional colors. Available in heights up to 10'. Price includes narrow face aluminum trim for top and bottom and T-molding that can be used as a glass spacer and/or to protect edge of glass when positioning two or more panels next to each other.

Calyx Glass

Number	Size (H x W)	Weight	Price
MGMW-64	6' x 4'	192 lbs.	\$1,920
MGMW-84	8' x 4'	256 lbs.	\$2,480
MGMW-104	10' x 4'	320 lbs.	\$3,000

Freight Class 70



Large Format Porcelain Marker System

Large Format Porcelain Marker Systems provide endless possibilities for capturing ideas as they flow. A writing wall ideal for brainstorming and presentations; magnetic receptive wall designed for displaying notices, photos, banners, and samples in offices, board rooms, conference rooms, etc. Large Format Marker Systems, with an LCS Porcelain steel low gloss surface, can be used for projection. Butt panels together for a continuous writing surface. Large Format Marker Systems can be designed to cover entire walls, floor-to-ceiling.

LCS Porcelain

Number	Description	Price/sq.ft.
MW1	LCS steel skins with matched butt joints	\$18
MW2	LCS panels mounted on 7/16" MDF with moisture barrier back and alum spline joints, 1 1/6" face trim	\$37
MW3	LCS panels mounted on 7/16" MDF with moisture barrier back and alum spline joints, 3/4" face trim	\$37

Freight Class 70



Ask about Large Format Marker System installations using Calyx 272A snap-on trim and clips.

Tack Wall

Tack Walls provide endless possibilities for capturing ideas as they flow. A tack wall designed for displaying notices, photos, banners, and samples in offices, board rooms, conference rooms, etc. Select Tack Wall material and color from standard Guilford, Carnegie and Maharam fabrics, or Calyx Cork. Tack Walls can be designed to cover entire walls, floor-to-ceiling.

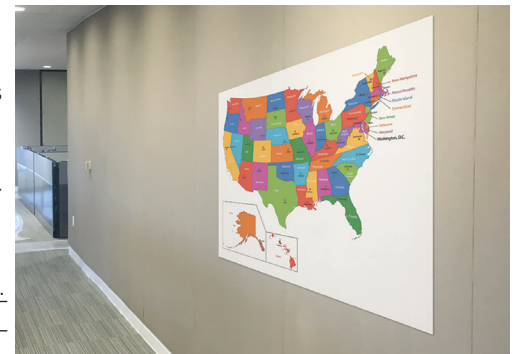
Tack Wall with Fabric

Number	Description	Price/sq.ft.
TW1D	Edge-wrapped	\$22
TW2D	Fabric covered trim	\$27

Tack Wall with Calyx Cork

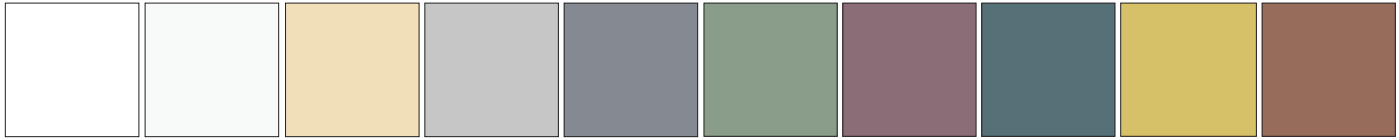
Number	Description	Price/sq.ft.
TW2C	Fabric covered trim	\$33

Freight Class 70



Standard Glass Colors

Calyx Glass Colors



*Brilliant White

Calm White

Light Ivory

Telegrey

Signal Grey

Sage

Plum

Storm

Zest

Terracotta

*Standard glass markerboard color comes in Brilliant White

LCS Porcelain Colors



White

Light Grey

Beige

LCS Chalkboard Colors



Green

Black

Grey

Standard Trim Colors

Standard Matte Finish Trim Colors



Grey

Slate Grey

Turquoise

Beige Red

Blue



White

Black

Silver

*Bronze

*Silver Grey

*Metallic matte finish

Standard Aluminum Trim Colors



Oyster White
RAL1013

Signal Yellow
RAL1003

Traffic Orange
RAL2009

Red Lilac
RAL4001

Signal Blue
RAL5005

Moss Green
RAL6005

Chocolate Brown
RAL8017

Silver Grey
RAL7001



Light Ivory
RAL1015

Zinc Yellow
RAL1018

Ruby Red
RAL3003

Claret Violet
RAL4004

Cobalt Blue
RAL5013

Traffic Green
RAL6024

Pale Brown
RAL8025

Steel Grey
RAL7015



Traffic Red
RAL3020

Strawberry Red
RAL3018

Ultramarine Blue
RAL5002

Violet Blue
RAL5000

Sky Blue
RAL5015

Leaf Green
RAL6002

Signal White
RAL9003

Jet Black
RAL9005

Also available in over 180 optional powder coat colors.

Colors are produced with reasonable accuracy.

Glass Gradient Colors

Ombria Standard Colors



Zest
2 Tone



Storm
2 Tone



Plum
2 Tone



Terracotta
2 Tone



Sage
2 Tone



Brilliant White
2 Tone



Calm White
2 Tone



Light Ivory
2 Tone

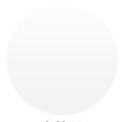


Telegrey
2 Tone



Signal Grey
2 Tone

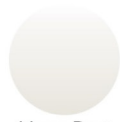
Ombria Color Options



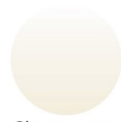
Mist
2 Tone



London Fog
2 Tone



Moon Dust
2 Tone



Champagne
2 Tone



Coconut Cream
2 Tone



Seaweed
2 Tone



Caribbean
3 Tone



Pebble
3 Tone



Smolder
2 Tone



Minimal Mint
2 Tone



Primeval
3 Tone



Winter Sky
3 Tone



Acid
3 Tone



Submarine
2 Tone



Smoke
3 Tone



Frozen Steel
2 Tone



Antique Rose
2 Tone



Mojave
3 Tone



Terra
3 Tone



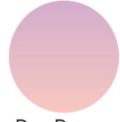
Verdigris
2 Tone



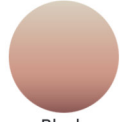
Still Water
3 Tone



Lavender Haze
3 Tone



Day Dream
2 Tone



Blush
3 Tone



Thicket
3 Tone



Abyss
3 Tone



Sherbet
3 Tone



Deep End
3 Tone



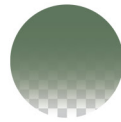
Brilliant White
Transparent



Light Ivory
Transparent



Signal Grey
Transparent



Sage
Transparent



Terracotta
Transparent



Shirley
2 Tone



Rose Petal
3 Tone



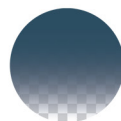
Calm White
Transparent



Telegrey
Transparent



Plum
Transparent



Storm
Transparent



Zest
Transparent

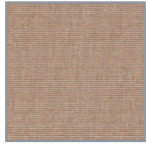


Custom
Transparent

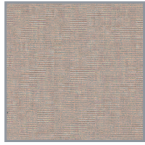
Materials

Fabric Options

Guilford Bailey



Baxter Beige
GB011



Belmont Silver
GB010

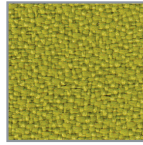


Khaki
GB012

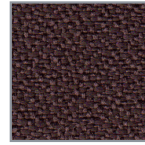


Sherman Pewter
GB024

Guilford Anchorage



Green Apple
GA087



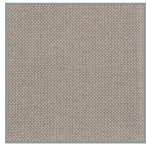
Fossil
GA093

Carnegie Quarry

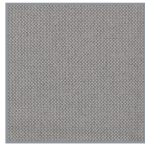


Stone Manor
CQ99

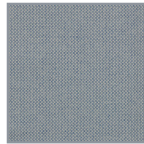
Maharam Merit



Lynx
028



Overcast
043



Rainfall
009



Blackout
004

Maharam Meld



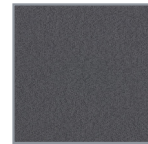
Seashell
012



Blonde
027



Crater
014

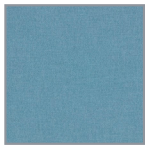


Knight
004

Maharam Manner



Citronella
045



Cottage
023



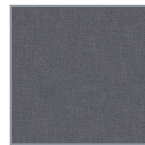
Dill
043



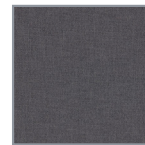
Nuance
006



Flint
004



Smoky
031



Porpoise
003



Magnetic
032

Maharam Manner



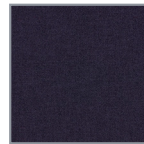
Southwest
047



Kimono
051



Oceanside
040



Valiant
052

Calyx Cork Options



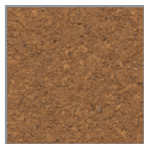
Mushroom
1108



Buff
1109



Fawn
1110



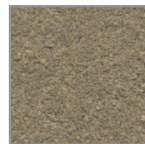
Tan
1100



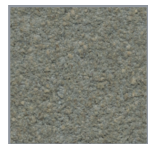
Cinnamon
1104



Oyster
1103



Smoke
1111



Steel Gray
1113



Graphite
1136



Black
1132



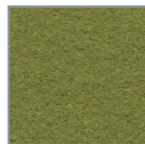
Salsa
1117



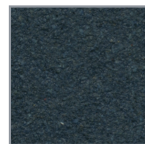
Tangerine
1118



Pineapple
1119



Lettuce
1120



Blueberry
1129

Colors are produced with reasonable accuracy.

Materials & Finishes

Acoustic Options

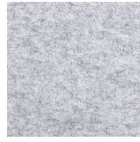
Standard Colors (in stock)



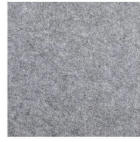
Pearl



White



Marble

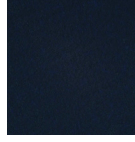


Steel



Graphite

Additional Colors (for order)



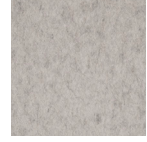
Deep Sea



Cayenne



Moss



Stone

Additional Colors (for order)



Moondust



Bluestone



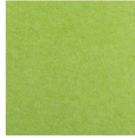
Topaz



Sapphire



Myrtle



Pear



Daisy



Orange



Ruby



Pewter



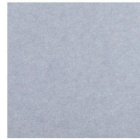
Tiger Eye



Camel



Quartz



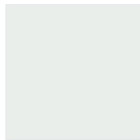
Ocean Mist



Black

MIX Options

MIX Contemporary Base, Accent Strip & Shelf



Signal White
RAL9003



Slate Grey
RAL7015



Matte Black
302P

MIX Industrial Base & Shelf



Matte Clear

MIX Industrial Accent Strip



Matte Black
302P

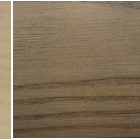
MIX Wood Finish Options



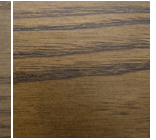
Clear



Vellum



Driftwood

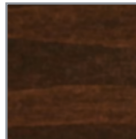


Rustic

Wood Finish Options



Maple



Mahogany



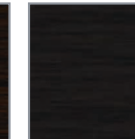
Cherry



Walnut



Espresso



Ebony

Custom wood
finishes optional

Calyx Legacy Products



Calyx offers a collection of legacy visual display products and accessories for the educational and office environments. With a broad selection of standard colors, surfaces and finishes, legacy products offer performance, productivity, and a pleasing work space.

Sliding Wall Systems

Sliding Glass Wall System

Horizontal Sliding Units are custom-built to meet your needs. The sliding panels are top-suspended and glide easily over aluminum track on molded nylon rollers. Claridge Glass doubles as a magnetic surface with metal backing. Claridge Glass is an ultra clear writing surface that won't ghost or stain. The sliding wall system covers an entire wall, floor-to-ceiling, up to 8' high.

Call for custom pricing.



Sliding Porcelain Wall System

Horizontal Sliding Units are custom-built to meet your needs. The sliding panels are top-suspended and glide easily over aluminum track on molded nylon rollers. Claridge LCS Porcelain accepts magnetic accessories. The sliding wall system covers an entire wall, floor-to-ceiling, up to 8' high and resists humidity and fading. Claridge LCS Porcelain surfaces have lifetime warranty.

Call for custom pricing.



Markerboards

LCS Deluxe Markerboard

Features:

- Projection-friendly white porcelain enamel steel writing surface
- 5/8" face trim, 3 sides with full length 2-1/2" marker tray; satin anodize finish
- Angle clip hangers
- Available with map rail with 2 map hooks
- 4 assorted LCS markers and 1 microfiber eraser cloth
- SCS Indoor Advantage Gold certified



With Map Rail

Number	Size (HxW)	Weight	Price
LCS2034R	3' x 4'	42 lbs.	\$535
LCS2044R	4' x 4'	56 lbs.	\$592
LCS2046R	4' x 6'	84 lbs.	\$823
LCS2048R	4' x 8'	112 lbs.	\$1,045
LCS2410R	4' x 10'	140 lbs.	\$1,322
LCS2412R	4' x 12'	168 lbs.	\$1,578
LCS2416R	4' x 16'	224 lbs.	\$1,989

No Map Rail

Number	Size (HxW)	Weight	Price
LCS2034	3' x 4'	42 lbs.	\$499
LCS2044	4' x 4'	56 lbs.	\$592
LCS2046	4' x 6'	84 lbs.	\$799
LCS2048	4' x 8'	112 lbs.	\$975
LCS2410	4' x 10'	140 lbs.	\$1,220
LCS2412	4' x 12'	168 lbs.	\$1,464
LCS2416	4' x 16'	224 lbs.	\$1,951

800 Series

Features:

- Porcelain enamel steel writing surface; satin anodize aluminum trim 5/8" face trim
- White LCS is furnished for markerboards if color not specified. For 800 Series chalkboards, use a "V" suffix in lieu of "L" and specify the chalkboard color required.
Example: 822V No. 500 Green.
- Full length marker tray and map rail with 2 map hooks
- Angle clip hangers (*For permanent installations we recommend using a combination of angle clips and 16A Adhesive.*)
- SCS Indoor Advantage Gold certified



Available in Markerboard and Chalkboard

Options:

- See page 27 for powder coat finish colors. Optional powder coat finishes add \$152 for boards up to 4' x 6' and \$200 for boards 4' x 8' and larger.
- For boards without a map rail, specify and deduct \$5.33 per lin. ft.
- For optional color anodized trim, call for price.
- Custom sizes available

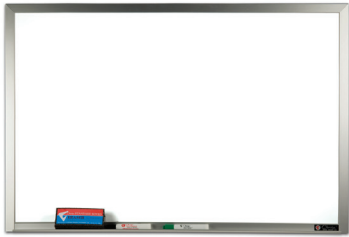
Number	Size (HxW)	Weight	Price
† 810L	18" x 24"	10 lbs.	\$325
† 812L	2' x 3'	21 lbs.	\$394
814L	3' x 4'	42 lbs.	\$517
818L	4' x 4'	56 lbs.	\$600
820L	4' x 5'	70 lbs.	\$745
822L	4' x 6'	84 lbs.	\$792
826L	4' x 8'	112 lbs.	\$999
830L	4' x 10'	140 lbs.	\$1,243
834L	4' x 12'	168 lbs.	\$1,439
838L	4' x 16'	224 lbs.	\$1,880

Note: Finished size of units is 1/4" larger in both height and width than sizes listed. If exact overall size is required, specify when ordering.

800 Series markerboards are also available in 5' x 6', 5' x 8', 5' x 10' and 5' x 12' sizes. Call for pricing.

Markerboards

Trimline Plus



Features:

- White porcelain enamel steel writing surface
- 1" eased face aluminum trim on three sides with small marker tray
- 2 markers and 1 eraser cloth
- SCS Indoor Advantage Gold Certified

Number	Size (HxW)	Weight	Price
† TL1824-75	18" x 24"	8 lbs.	\$233
† TL2023-75	2' x 3'	15 lbs.	\$371
† TL2034-75	3' x 4'	28 lbs.	\$471
TL2044-75	4' x 4'	40 lbs.	\$499
TL2046-75	4' x 6'	60 lbs.	\$725
TL2048-75	4' x 8'	80 lbs.	\$881

WLCS Series



Features:

- 1-3/4" face trim
- White porcelain enamel steel writing surface; Natural finish oak frame
- Z-bar clips
- 4 Assorted LCS Markers and one eraser cloth

Options:

- For Medium Oak finish, add \$19.58.
- See page 57 for additional woods and finishes. If required, specify on order and ADD \$108.

Number	Size (HxW)	Weight	Price
WLCS44	4' x 4'	56 lbs.	\$752
WLCS46	4' x 6'	84 lbs.	\$896
WLCS48	4' x 8'	112 lbs.	\$1,070
WLCS410	4' x 10'	140 lbs.	\$1,269

† Can ship UPS Ground.
All items on this page ship Freight Class 70.

Merit Series

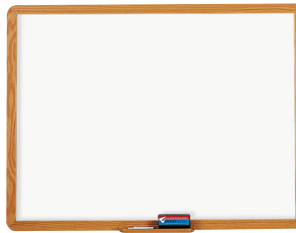


Features:

- White porcelain enamel steel writing surface
- 3/8" face satin anodize aluminum trim
- Z-bar clips

Number	Size (HxW)	Weight	Price
† MT2436	24" x 36"	16 lbs.	\$320
† MT3648	36" x 48"	32 lbs.	\$441

2900 Series



Available in both markerboard and chalkboard

Features:

- 1-3/4" flat face trim; radius corners
- Porcelain enamel steel writing surface; Natural or Medium Oak finish trim
- White LCS is furnished for markerboards if color not specified (see page 27 for colors). For 2900 Series chalkboards, use a "V" suffix in lieu of "L" and specify chalkboard color required. Example: 2948V No. 502 Gray.
- 12" pre-drilled marker tray
- Z-bar clips

Options:

- See page 57 for optional woods and finishes. If required, specify on order and ADD \$56.
- For custom match finish, add \$492.
- For optional Z-bar hangers for top of board and rubber bumpers for bottom of board, add \$10.80 per lineal foot.

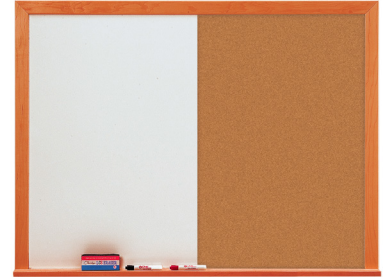
Number	Size (HxW)	Weight	Price
† 2923L	2' x 3'	21 lbs.	\$420
† 2934L	3' x 4'	42 lbs.	\$561

Markerboard/Tackboard Combos

LCS Deluxe Combo

Features:

- 1-3/4" face trim
- White porcelain enamel markerboard writing surface on the left; natural tan nucork tack surface on the right
- Natural Oak finish perimeter trim and marker tray
- Z-bar clips
- 4 Assorted LCS Markers and 1 microfiber eraser cloth



Options:

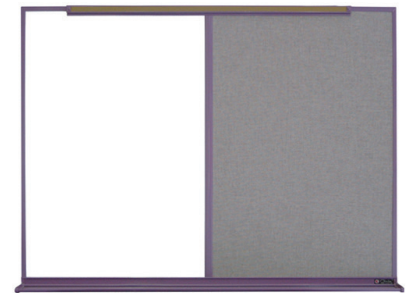
- For Medium Finish Oak frame, specify ADD and add \$19.
Other optional wood finishes shown on page 57. If required, specify ADD and add \$109.

Number	Size (HxW)	Weight	Price
LCS1044	4' x 4'	32 lbs.	\$639

800 Series Type BR/BL

Features:

- Type BR/BL Combination features porcelain enamel steel markerboard or chalkboard writing surface and your choice of Tan Nucork, Fabricork, Guilford of Maine FR701 Fabric, or Calyx Cork tack surface
- Specify width of writing surface and whether it is on the right or the left. Type BR has the bulletin board on the right; Type BL has bulletin board on the left.
- 5/8" face satin anodize aluminum trim
- Full length accessory tray, map rail with cork insert, and map hooks
- Angle clip hangers (Note: For permanent installation we recommend using a combination of 16A Adhesive and angle clips.)



Shown with Optional Powder Coat Finish

Options:

- See page 27 for powder coat finish colors. Optional powder coat finishes add \$158 for boards up to 4' x 6' and \$218 for boards 4' x 8' and larger.

Number	Size	Calyx Cork	Fabric	Fabricork	Tan Nucork
864	4' x 4'	\$682	\$608	\$589	\$589
868	4' x 6'	\$873	\$789	\$751	\$751
872	4' x 8'	\$1,164	\$1,024	\$978	\$978

Type BR/BL units with Fabricork and Guilford of Maine FR701 Fabric weigh approx. 2 lbs. per sq. ft.; Calyx Cork, approx. 3 lbs. per sq. ft.
To specify the writing surface portion, add L or V after the number: L for LCS Markerboard, V for Chalkboard
To select tack surface add N, D, F, or CC after the writing surface suffix:
N for Tan Nucork, D for Fabric, F for Fabricork, CC for Calyx Cork
Note: Finished size of units is 1/4" larger in height and width than sizes listed. If exact overall size required, specify when ordering.

† Can ship UPS Ground.
All items on this page ship Freight Class 70.

Tackboards - Aluminum Trim

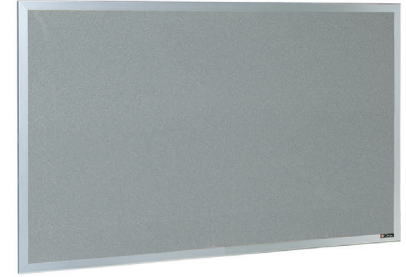
800 Series Tackboard

Features:

- Choose from Calyx Cork, Guilford Fabric, Fabricork, or Tan Nucork.
- 5/8" face satin anodize aluminum trim
- Angle clip hangers (Note: We recommend installation using a combination of angle clips and 16A Adhesive)

Options:

- Optional powder coat finishes add \$106 for boards up to 4x6 and \$139 for boards 4x8 and larger



Size (HxW)	Calyx Cork Number	Price	Guilford Fabric Number	Price	Fabricork Number	Price	Tan Nucork Number	Price
18" x 24"	† 837CC	\$191	† 837D	\$163	† 837F	\$149	† 837N	\$148
2' x 3'	† 839CC	\$249	† 839D	\$197	† 839F	\$179	† 839N	\$172
3' x 4'	† 840CC	\$409	† 840D	\$276	† 840F	\$239	† 840N	\$242
4' x 4'	844CC	\$488	844D	\$324	844F	\$277	844N	\$289
4' x 6'	852CC	\$718	852D	\$452	852F	\$370	852N	\$386
4' x 8'	858CC	\$888	858D	\$575	858F	\$494	858N	\$510
4' x 10'	862CC	\$1,089	862D	\$715	862F	\$589	862N	\$608
4' x 12'	864CC	\$1,265	864D	\$850	864F	\$719	864N	\$670
4' x 16'	866CC	\$1,657	866D	\$1,187	866F	\$1,103	866N	\$890

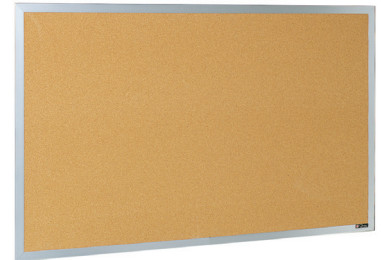
Guilford of Maine FR701 Fabric, Fabricork and Tan Nucork tackboards weigh approx. 1.25 lbs. per sq. ft.; Calyx Cork tackboards weigh approx. 3 lbs. per sq. ft. 800 Series and tackboards in Fabricork and Guilford of Maine FR701 Fabric are SCS Indoor Advantage Gold certified.

900A Tackboard

Features:

- Natural Tan Nucork reinforced with sturdy back panels
- 1-1/4" face satin anodize trim
- Keyhole hangers

Number	Size (HxW)	Weight	Price
953A	3' x 5'	19 lbs.	\$327
958A	4' x 4'	20 lbs.	\$295
959A	4' x 5'	25 lbs.	\$332
960A	4' x 6'	30 lbs.	\$390
962A	4' x 8'	40 lbs.	\$520
963A	4' x 10'	50 lbs.	\$696
964A	4' x 12'	60 lbs.	\$763



† Can ship UPS Ground.
All items on this page ship Freight Class 70.

Tackboards - Wood Trim

213 Series

Features:

- 2" angle face trim with black accent
- Tackable surface in Calyx Cork; see page 56 for color selections
- Specify finish – Natural or Medium Oak
- Full length Z-bar hanger at top

Options:

- See page 57 for wood finish options. If required, specify and ADD \$245.
- For Custom Match finish, specify and ADD \$492.



Size (HxW)	Weight	Number	Price
4' x 4'	48 lbs.	213	\$1,375
4' x 6'	72 lbs.	213A	\$1,550
4' x 8'	96 lbs.	213B	\$1,750
4' x 10'	120 lbs.	213C	\$2,055
4' x 12'	144 lbs.	213D	\$2,217

Specify tack surface material after model number CC for Calyx Cork.

WLCS Series 700

Features:

- Choose from tackable surface in Guilford of Maine FR701 Fabric, Fabricork, Calyx Cork, and Tan Nucork. See page 56 for color options.
- 1-3/4" face Natural Oak finish trim
- Z-bar clips at top

Options:

- For Medium Oak finish trim, specify and ADD \$20. Optional wood finishes shown on page 57. If required, specify and ADD \$95.
- For custom match finish add \$492.
- For optional round corners, add \$75.



Size (HxW)	Calyx Cork Number	Price	Guilford Fabric Number	Price	Fabricork Number	Price	Tan Nucork Number	Price
2' x 3'	†750CC	\$315	†750D	\$295	†750F	\$278	†750N	\$275
3' x 4'	†751CC	\$475	†751D	\$375	†751F	\$333	†751N	\$322
4' x 4'	757CC	\$591	757D	\$430	757F	\$380	757N	\$383
4' x 6'	759CC	\$774	759D	\$568	759F	\$484	759N	\$520
4' x 8'	760CC	\$977	760D	\$694	760F	\$586	760N	\$627

700 Series tackboards in Fabricork and Guilford of Maine FR701 Fabric are SCS Indoor Advantage Gold certified.

Guilford of Maine FR701 Fabric, Fabricork and Tan Nucork tackboards weigh approximately 1.25 lbs. per sq. ft.; Calyx Cork tackboards weigh 3 lbs. per sq. ft.

† Can ship UPS Ground.
All items on this page ship Freight Class 70.

Tackboards - Frameless

3300 Series

Edge-wrapped Tackboards for Furniture Applications

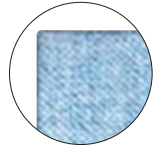
Features:

- Guilford of Maine FR701 Fabric or Fabriccork tackboards are designed to fit almost any manufacturer's hutch, file cabinet, or bookcase
- Use as a tackable surface, for sound absorption, or simply to add color
- Tackable panels have square corners, fabric wrapped edges and are furnished with hook and loop hole hangers

Options:

- Adhesive is recommended for permanent installation
- Customer owned material for vertical surfaces can be used

Number	Size (HxW)	Weight	Price
† 3327D	15" x 27"	6 lbs.	\$151
† 3333D	15" x 33"	8 lbs.	\$165
† 3345D	15" x 45"	10 lbs.	\$193
3357D	15" x 57"	13 lbs.	\$263
3367D	15" x 67"	15 lbs.	\$285
3369D	15" x 69"	18 lbs.	\$296



Edge-wrapped
Square Corners

3400 Series

Fabric Wrapped Edges, Radius Corners

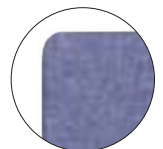
Features:

- Tackable surface in Guilford of Maine FR701 Fabric; specify color - see page 56
- Fabric wrapped panels have 2" radius corners
- Eyelet hangers for easy installation

Number	Size (HxW)	Weight	Price
† 3423D	2' x 3'	8 lbs.	\$230
† 3434D	3' x 4'	15 lbs.	\$330
3444D	4' x 4'	20 lbs.	\$371
3446D	4' x 6'	30 lbs.	\$528
3448D	4' x 8'	40 lbs.	\$690



Eyelet hanger



Edge-wrapped
2" Radius Corners

† Can ship UPS Ground.
All items on this page ship Freight Class 70.

Mobile Boards

Premiere Series Reversible Mobile Board

Features:

- Porcelain enamel steel dry-erase markerboard; or a combination with markerboard writing surface one side and Tan Nucork on the other side; also available with chalkboard
- Substantially constructed with either satin anodize aluminum frame or Natural Oak finish wood frame
- Panel revolves horizontally; metal locking device holds board at desired angle
- 2 locking and 2 non-locking 2" casters furnished
- Overall height is 74-1/2".

Options:

- Floor glides or 4 non-locking casters
- For Medium Oak, specify and ADD \$63. Optional wood finishes shown on page 57; if required, specify and ADD \$211.



Description	Size (HxW)	Weight	Aluminum	Price	Wood	Price
White LCS both sides	4' x 6'	100 lbs.	LCS56	\$2,055		
	3'6" x 5'	75 lbs.	LCS55	\$1,875		
	3' x 4'	50 lbs.	LCS155	\$1,565	LCS153	\$1,650
LCS - 1 side	4' x 6'	100 lbs.	LCS69	\$1,775		
Tan Cork - 2	3'6" x 5'	75 lbs.	LCS67	\$1,614		
	3' x 4'	50 lbs.	LCS167	\$1,418	LCS158	\$1,600

Premiere Series 8-foot Reversible Mobile Board

Features:

- LCS both sides
- 4' high x 8' wide panel
- Call for more information

Number	Size (HxW)	Weight	Price
LCS248	4' x 8'	134 lbs.	\$3,125



Deluxe Two-sided Mobile Board

Features:

- White LCS markerboard
- Double-sided panel is mounted on heavy, rigid aluminum standards (panel does not revolve)
- Upright posts and cross pieces are 1-1/2" x 2" rectangular tubing; full length accessory tray is 2-1/2" wide. Overall height is 75-1/2".
- 2 locking and 2 non-locking 3" casters furnished; can be nested to conserve space

Description	Number	Size (HxW)	Weight	Price
White LCS both sides	48LW	4' x 6'	135 lbs.	\$3,532
	48-8LW	4' x 8'	180 lbs.	\$4,135



All items on this page ship Freight Class 85.

Mobile Boards

Deluxe Series Revolving Two-sided Mobile Board

Features:

- Porcelain writing surface in LCS markerboard
- Panel is mounted on heavy, rigid aluminum standards and revolves on 2 pins in a horizontal plane.
- Upright posts and cross pieces are 1-1/2" x 2" rectangular tubing; full length accessory tray is 2-1/2" wide. Overall height is 75-1/2".
- Moves easily on carpet casters and can be stacked to conserve space
- Available with markerboard or chalkboard one side with Tan Cork on the opposite side



Description	Number	Size (HxW)	Weight	Price
White LCS	146BL	4' x 5'	192 lbs.	\$3,328
both sides	146CL	4' x 6'	214 lbs.	\$3,617
	146EL	4' x 8'	272 lbs.	\$4,214

Ship Freight Class 85.

Glass Door Cabinets

Imperial Series Bulletin Board

Features:

- Constructed of heavy-gauge satin anodize aluminum
- Tackable back panels in Calyx Cork, Fabricork, or Guilford of Maine FR701 fabric. See page 56 for color selections.
- 2 sliding 3/16" tempered glass doors with finger pulls and flat key tumbler lock
- Bulletin Board Cabinets are 3-1/4" overall; inside depth is 1-1/2"
- Z-bar hangers



Option:

- For Medium or Dark Bronze Anodize in lieu of Satin, specify Imperial BA ADD and add \$1,441.
- For powder coat finish in lieu of Satin, specify Imperial PC ADD and add \$289.
- For Lights, specify Imperial Light ADD and add \$695.

Size (HxW)	Weight	Number	Price
36" x 48"	80 lbs.	294	\$2,478
36" x 60"	100 lbs.	295	\$2,814
36" x 72"	120 lbs.	296	\$3,011
48" x 60"	135 lbs.	297	\$3,108
48" x 72"	160 lbs.	298	\$3,245

Ships Freight Class 100.

Glass Door Bulletin Board Cabinets

Universal Bulletin Board

Features:

- Tackable back panels in Calyx Cork, Fabricork, or Guilford of Maine FR701 Fabric. See page 56 for color selections.
- Frames and all structural members are satin anodize aluminum; overall cabinet depth is 3"; inside depth 1-15/16"
- Three 3/16" tempered glass doors with piano hinges and flat key tumbler locks
- Z-bar hangers



Options:

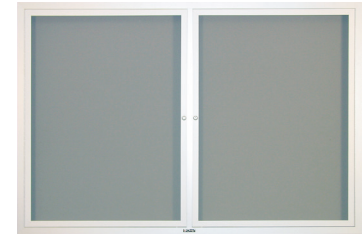
- For Medium or Dark Bronze Anodize in lieu of Satin, specify Universal BA ADD and add \$1,441.
- For powder coat finish in lieu of Satin, specify Universal PC ADD and add \$427.
- For Light, specify Light ADD and add \$390 PER DOOR.

Size (HxW)	Weight	Number	Price
36" x 72"	159 lbs.	1846	\$3,550
48" x 72"	177 lbs.	1847	\$3,950

Contemporary Series Bulletin Board Cabinet

Features:

- Perimeter trim is 1-1/2" x 3" heavy-gauge rectangular aluminum with satin anodize finish; inside depth is 1-3/4"
- Tackable back panels can be Calyx Cork, Fabricork, Guilford of Maine FR701 Fabric, or Hook-Fab; see page 56 for color selections.
- 3/16" tempered sliding glass doors have ground-in finger pulls; hinged doors are hung on piano hinges. Both have flat key tumbler locks
- Cabinets with header have 6" translucent Plexiglas header panel; specify name
- Z-bar hangers for surface mounting
- Dimensions are overall, including trim



Options:

- For lights, specify Light ADD and add \$390 PER DOOR.
- For Medium or Dark Bronze Anodize finish in lieu of Satin, specify Contemporary BA ADD and add \$1,441.
- For powder coat finish in lieu of Satin, specify Contemporary PC ADD and add \$527.
- Cabinets with 4" housing in lieu of 3" – call for pricing
- Weatherproofing on hinged door cabinets – call for pricing
- Intermediate sizes available
- For Heights over 4' (4'6" maximum recommended), specify Contemporary Extra Height ADD and add \$258.

Size (HxW)	Weight	Doors**	Hinged Door	Sliding Door*	Hinged w/Header	Sliding w/Header *
3' x 2'	42 lbs.	1	2035 \$1,797	2035S \$2,618	3035H \$2,374	3035S \$3,149
3' x 2'6"	45 lbs.	1	2036 \$1,890	2036S \$2,917	3036H \$2,657	3036S \$3,390
3' x 3'	54 lbs.	1	2037 \$1,970	2037S \$2,972	3037H \$2,747	3037S \$3,580
3'6" x 2'6"	53 lbs.	1	2038 \$1,918	2038S \$2,977	3038H \$2,699	3038S \$3,520
3'6" x 3'	63 lbs.	1	2039 \$2,217	2039S \$3,088	3039H \$2,873	3039S \$3,640
4' x 4'	96 lbs.	2 pair	2040 \$3,575	2040S \$3,708	3040H \$3,801	3040S \$4,180
3' x 4'	72 lbs.	2 pair	2041 \$3,016	2041S \$3,201	3041H \$3,479	3041S \$3,793
3'6" x 5'	105 lbs.	2 pair	2042 \$3,835	2042S \$3,849	3042H \$4,095	3042S \$4,502
4' x 5'	120 lbs.	2 pair	2043 \$3,965	2043S \$4,031	3043H \$4,208	3043S \$4,622
4' x 6'	144 lbs.	2 pair	2044 \$4,222	2044S \$4,294	3044H \$4,718	3044S \$5,002
4' x 8'	256 lbs.	3 pair	2046 \$6,513	2046S \$6,661	3046H \$7,716	3046S \$7,402

Note: Recessed installation is optional. If required, provide finished opening measurements into which the unit will be placed. Cabinet will be made 1/2" smaller in each direction for easy fit.

**Sliding door units with more than 2 doors will have mullion(s).*

***Note: 3' x 2' cabinet has one door; 3' x 4' through 4' x 6' have 2 pair of doors; and 4' x 8' has 3 pair of doors.*

All items on this page ship Freight Class 100.

Glass Door Bulletin Board Cabinets

Large Contemporary Series Bulletin Board Cabinet

Features:

- Heavy-gauge rectangular aluminum housing with satin anodize finish in 1-1/2" x 3" or 1-3/4" x 4"; inside depth of 3" cabinet is 1-3/4"; inside depth of 4" cabinet is 2-3/4"
- Mitered corners are reinforced for rigidity
- Tackable back panels in Calyx Cork, Fabricork, Guilford of Maine FR701 Fabric, or Hook-Fab. See page 56 for color selections.
- Locking tempered glass doors are hung on piano hinges
- Continuous angle hangers furnished for top and bottom
- Surface or recess installed (When ordering for recess installation, provide exact (finished) opening measurements into which the unit will be placed. Cabinet will be made 1/2" smaller in each direction for easy fit.)



Options:

- For lights, specify Light ADD and add \$364 PER DOOR. Light not available in 3" cabinets
- For Medium or Dark Bronze Anodized finish in lieu of Satin, specify Large Contemporary BA ADD and add \$1,921.
- For powder coat finish in lieu of Satin, specify Large Contemporary PC ADD and add \$835.

Size (HxW)	Weight	Doors	3" Housing	Price	4" Housing	Price
5' x 3'	180 lbs.	1	2153-3	\$3,873	2153-4	\$5,390
5' x 6'	300 lbs.	2 pair	2156-3	\$6,925	2156-4	\$7,698
6' x 4'	250 lbs.	1	2164-3	\$4,505	2164-4	\$6,248
6' x 8'	500 lbs.	2 pair	2168-3	\$8,393	2168-4	\$9,366

Classic Series Bulletin Board Cabinet

Features:

- Radius edge cabinet is constructed of 1-1/2" x 3" hollow tube perimeter trim with satin anodize finish; inside depth is 1-3/4"
- Tackable back panels can be Calyx Cork, Fabricork, or Guilford of Maine FR701 Fabric. See page 56 for color selections.
- 3/16" tempered glass doors have continuous hinges and flat key tumbler locks
- Z-bar hangers

Options:

- For lights, specify Light ADD and add \$390 PER DOOR.
- For Medium or Dark Bronze Anodize finish in lieu of Satin, specify Classic BA ADD and add \$1441.
- For powder coat finish in lieu of Satin, specify Classic PC ADD and add \$466.



Number Doors	Size (HxW)	Weight	Price
1023	2 3' x 4'	86 lbs.	\$3,063
1024	2 4' x 4'	116 lbs.	\$3,188
1025	2 4' x 5'	148 lbs.	\$3,625
1026	2 4' x 6'	178 lbs.	\$4,063
1028	4 4' x 8'	232 lbs.	\$6,124

All items on this page ship Freight Class 100.

Glass Door Bulletin Board Cabinets

Revere Series Bulletin Board Cabinet

Features:

- Tackable back panels in Tan Nucork, Calyx Cork, Fabricork, Guilford of Maine FR701 Fabric, or Hook-Fab. See page 56 for color selections.
- Constructed with 1" x 3" hollow tube perimeter in satin anodize finish
- Cabinets have hinged door(s) with 3/16" tempered glass, continuous piano-type hinges and flat key tumbler locks
- Dimensions given are overall, including trim and housing; inside depth is 1-3/4"
- Z-bar hangers

Options:

- For lights, specify Light ADD and add \$365 PER DOOR.
- For Medium or Dark Bronze Anodize finish in lieu of Satin, specify Revere BA ADD and add \$1,441.
- For powder coat finish in lieu of Satin, specify Revere PC ADD and add \$496.
- For round corner design in lieu of square corners, specify Revere RC ADD and add \$113.
- Intermediate sizes available
- For heights over 4' (4'6" maximum recommended), specify Revere Extra Height ADD and add \$248.

Size (HxW)	Weight	Doors	Calyx Cork	Price	Tan Nucork	Price
3' x 3'	50 lbs.	1	3820BCC	\$2,025	3820BN	\$1,856
3'6" x 3'	58 lbs.	1	3920BCC	\$2,269	3920BN	\$2,136
3' x 4'	66 lbs.	2	4120BCC	\$2,588	4120BN	\$2,434
4' x 4'	88 lbs.	2	4020BCC	\$2,964	4020BN	\$2,761
3'6" x 5'	96 lbs.	2	4220BCC	\$3,211	4220BN	\$2,954
4' x 6'	144 lbs.	2	4420BCC	\$3,600	4420BN	\$3,290

Note: For Fabricork, Guilford of Maine FR701 Fabric, or Hook-Fab, specify material and color and use Calyx Cork price.

Recessed installation is optional – provide exact (finished) opening measurements into which the unit will be placed.

Cabinets made 1/2" smaller in each direction for easy fit.



Deluxe Series Bulletin Board Cabinet

Features:

- Tan Nucork back panel
- Satin anodize aluminum frame; overall depth 2"; inside depth 3/4"
- 3/16" hinged tempered glass doors with locks
- Z-bar hangers

Options:

- For Medium or Dark Bronze Anodize finish in lieu of Satin, specify Deluxe BA ADD and add \$1,441.
- For powder coat finish in lieu of Satin, specify Deluxe PC ADD and add \$251.

Number	Doors	Size (HxW)	Weight	Price
1941	2	36" x 48"	66 lbs.	\$2,795

Note: Finished unit is 1/8" larger in height and width than size shown.



Rival Bulletin Board Cabinet

Features:

- Tan Nucork tackable back panel
- Cabinet has satin anodize finish aluminum frame; outside depth is 1-15/16"; inside depth 3/4"
- 3/16" tempered glass door with piano-type hinge and flat key tumbler lock
- Z-bar hangers

Options:

- For Medium or Dark Bronze Anodize finish in lieu of Satin, specify Rival BA ADD and add \$961.
- For powder coat finish in lieu of Satin, specify Rival PC ADD and add \$167.

Number	Size (HxW)	Weight	Price
367	42" x 30"	60 lbs.	\$1,935



Shown with optional bronze anodize finish

All items on this page ship Freight Class 100.

Glass Door Bulletin Board Cabinets

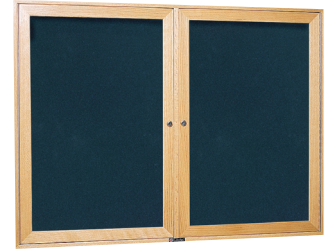
Wood Frame Bulletin Board

Features:

- Tackable bulletin board back panel in Calyx Cork, Fabricork, Guilford of Maine FR701 Fabric, or Hook-Fab. See page 56 for color selection.
- Mitered corner construction in Natural or Medium Oak finish. Specify finish.
- 2" deep outside; 3/4" inside
- 3/16" tempered hinged glass door with flat key tumbler locks
- Z-bar hangers

Options:

- See page 57 for optional woods and finishes. If required, specify and ADD \$212.



Size (HxW)	Weight	Doors	Bulletin Board	
36" x 48"	55 lbs.	2	3080	\$2,586
48" x 48"	75 lbs.	2	3080A	\$2,825
42" x 60"	85 lbs.	2	3080B	\$3,023
48" x 60"	90 lbs.	2	3080C	\$3,038
48" x 72"	110 lbs.	3	3080D	\$3,919

310 Bulletin Board

Features:

- Tackable bulletin board back panels in Calyx Cork, Fabricork, Guilford of Maine FR701 Fabric, or Hook-Fab. See page 56 for color selection.
- Constructed of Natural or Medium Oak finish, cabinet has mitered corners; 3-1/4" deep outside; 1-1/4" inside
- Two 3/16" tempered sliding glass doors with heavy-duty locks
- Sliding glass door shoe, channel, and track are extruded aluminum with bronze finish
- Z-bar hangers

Options:

- See page 57 for optional woods and finishes. If required, specify and ADD \$71.
- For optional Lights, specify 310 Light ADD and add \$695.



Note: Overall height is approximately 3/16" larger than shown.

Size (HxW)	Weight	Doors	Bulletin Board	
36" x 48"	82 lbs.	2	310	\$2,650
36" x 60"	102 lbs.	2	310A	\$2,838
36" x 72"	122 lbs.	2	310B	\$3,060
48" x 60"	134 lbs.	2	310C	\$3,135
48" x 72"	162 lbs.	2	310D	\$3,254

EPH Header Panel

Features:

- Optional 6" Plexiglas header panel available on most hinged door cabinets
- Includes six letters per foot; sold in 6" increments.



Number	Price per linear ft.
EPH	\$58

Note: A separate header panel is furnished above each door on cabinets with more than 1 opening.

All items on this page ship Freight Class 100.

Display and Trophy Cases

Premiere Freestanding Display Case

Features:

- Constructed in one continuous piece, Premiere cases do not require wall support
- Tackable back panels in Calyx Cork, Fabricork, Guilford of Maine FR701 Fabric, Hook-Fab, and Tan Nucork. See page 56 for color selections. Back panels also available in Walnut or Oak grain high-pressure laminate.
- Frame is heavy-gauge satin anodized aluminum; inside depth is 13-3/4"
- Oak or Walnut grain high-pressure laminate base and aluminum legs are 18" high
- 3/16" tempered glass sliding doors with locks and keys, and three 6", 8", 10", or 12" wide adjustable glass shelves
- Floor leveling glides included

Features:

- Intermediate sizes available
- For optional Lights, specify Light ADD and add \$389 per pair of doors.
- For Medium or Dark Bronze anodized in lieu of satin anodize, specify Premiere Free BA ADD and add \$3,844.
- For powder coat finish in lieu of satin anodize, specify Premiere Free PC ADD and add \$1,237.

Note: Specify shelf width, frame finish, and type and color of back panel.



Size (HxWxD)	Weight	Doors	Aluminum Legs Number Price	Wood Base Number Price
5'6" x 4' x 1'4"	320 lbs.	1 pair	456 \$8,517	470 \$9,358
5'6" x 5' x 1'4"	400 lbs.	1 pair	457 \$9,210	471 \$10,057
5'6" x 6' x 1'4"	480 lbs.	1 pair	458 \$9,832	472 \$10,720
5'6" x 8' x 1'4"	640 lbs.	2 pairs	463 \$14,656	474 \$15,401
5'6" x 10' x 1'4"	800 lbs.	2 pairs	465 \$16,236	475 \$17,073
5'6" x 12' x 1'4"	960 lbs.	3 pairs	467 \$20,631	476 \$21,032
5'6" x 16' x 1'4"	1280 lbs.	3 pairs	469 \$24,092	478 \$23,808

742 Freestanding Display Case

Features:

- Hardwood frame with Natural Oak finish; base is 12" deep
- 3/16" tempered glass sliding glass doors with flat key tumbler locks
- Three 10" adjustable shelves

Options:

- For optional woods and finishes, see page 57.
- If required, specify and ADD \$143.



	Number	Size (HxWxD)	Weight	Price
Glass Back Panel	742	42" x 36" x 12"	135 lbs.	\$5,955
Mirror Back Panel	742A	42" x 36" x 12"	135 lbs.	\$6,126

All items on this page ship Freight Class 125.

Display and Trophy Cases

Classic Series Display Case

Features:

- Solid wood construction
- Case has an inside depth of 15-3/4"
- Cases have 3/16" tempered glass doors with flat key tumbler locks
- 3 adjustable glass shelves
- Back panel available in Calyx Cork, Fabricork, or Guilford of Maine FR701 Fabric; see page 56 for color selections.

Options:

- Laminate back panel in your choice of standard Wilsonart laminates
- For optional light, specify 650 LIGHT ADD and add \$556.



Finish	Size (HxWxD)	Weight	Hinged Door		Sliding Door	
			Number	Price	Number	Price
Natural Oak	72" x 48" x 18"	400 lbs.	650N	\$11,528	651N	\$11,361
Medium Oak	72" x 48" x 18"	400 lbs.	650M	\$11,528	651M	\$11,032
Mahogany	72" x 48" x 18"	400 lbs.	650MS	\$11,677	651MS	\$11,458
Maple	72" x 48" x 18"	400 lbs.	650MA	\$12,401	651MA	\$11,545
Cherry	72" x 48" x 18"	400 lbs.	650CH	\$12,217	651CH	\$11,884

748 Universal Series Display Case

Features:

- Case is 6'6" high and 48" wide with an outside depth of 18" and an inside depth of 15-3/4"; glass back panel
- Extruded aluminum frame; 302P Black powder coat finish
- Lighting at top accentuates exhibits
- 3/16" tempered glass back panel, end panels, and sliding doors with flat key tumbler lock
- 3 adjustable shelves with brackets and standards
- Black laminate base is 18" high and features storage space with sliding doors and lock

Options:

- For other standard powder coat colors, see page 27
- Other standard Wilsonart laminate colors available



	Number	Size (HxWxD)	Weight	Price
Illuminated	748	78" x 48" x 18"	400 lbs.	\$12,138
No Light	748A	78" x 48" x 18"	400 lbs.	\$11,259

All items on this page ship Freight Class 125.

Glass Door Display Cases

Premiere Wall Mounted Display Case

Features:

- Constructed of heavy-gauge satin anodize aluminum
- Inside depth is 13-3/4"
- Tackable back panels in Calyx Cork, Fabricork, Guilford of Maine FR701 Fabric, Hook-Fab, and Tan Nucork. See page 56 for color selections. Back panels also available in Walnut or Oak grain high-pressure laminate.
- 3/16" tempered glass sliding doors with locks and keys, and three 6", 8", 10", or 12" wide adjustable glass shelves
- Continuous angle hangers

Options:

- Intermediate sizes available
- For optional Lights, specify Light ADD and add \$389 per pair of doors.
- For Medium or Dark Bronze anodized finish in lieu of satin anodize, specify Premiere Wall BA ADD and add \$3,762.
- For powder coat finish in lieu of satin anodize, specify Premiere Wall PC ADD and add \$1,178.

Note: Specify shelf width, frame finish, and type and color of back panel.



Number	Size (HxWxD)	Weight	Doors	Price
479	4' x 3' x 1'4"	216 lbs.	1 pair	\$7,788
481	4' x 4' x 1'4"	288 lbs.	1 pair	\$8,548
482	4' x 5' x 1'4"	360 lbs.	1 pair	\$9,258
483	4' x 6' x 1'4"	432 lbs.	1 pair	\$10,089
484	4' x 8' x 1'4"	640 lbs.	2 pair	\$14,362
485	4' x 10' x 1'4"	800 lbs.	2 pair	\$15,990
486	4' x 12' x 1'4"	960 lbs.	3 pair	\$19,880
488	4' x 16' x 1'4"	1280 lbs.	3 pair	\$22,826

309 Sliding Door Display Case

Features:

- Constructed with Natural or Medium Oak finish
- Tackable back panels in Calyx Cork, Fabricork, Guilford of Maine FR701 Fabric, or Hook-Fab. See page 56 for color selections.
- Inside depth of 10-3/4" case is 8-7/8"; inside depth of 7" case is 5-1/8"
- 3/16" tempered glass sliding doors with finger pulls and flat key tumbler lock; adjustable glass shelves
- Sliding glass door shoe, channel, and track are extruded aluminum with bronze finish
- Z-bar hangers

Options:

- For optional Lights, specify Light ADD and add \$389.
- See page 57 for optional woods and finishes. If required, specify ADD and add \$187.



Case Number	Size (HxWxD)	No. of Shelves	Shelf Width	Weight	Price
309	3' x 4' x 7"	2	4"	200 lbs.	\$3,950
309A	4' x 5' x 7"	3	4"	260 lbs.	\$4,582
309B	4' x 6' x 7"	3	4"	300 lbs.	\$4,907
309C	4' x 5' x 10-3/4'	3	8"	320 lbs.	\$5,463
309D	4' x 6' x 10-3/4'	3	8"	340 lbs.	\$5,872

All items on this page ship Freight Class 125.

Glass Door Display Cases

370 Series Recessed Display Case

Features:

- Display case fronts are built of satin anodize aluminum
- Tackable back panels in Calyx cork, Fabricork, Guilford of Maine FR701 Fabric, and Hook-Fab, or Oak or Walnut grain high-pressure laminate. See page 56 for color selection.
- 3/16" tempered glass sliding doors with lock and key
- Three 6", 8", 10", or 12" wide glass shelves with standards and brackets



Note: Always specify type and color of back panel; width of glass shelves and whether wood box and/or light are required. Lights, when required, are installed but wiring is not included.

Options:

- Wood box (specify depth) up to 24" (16" furnished if depth not specified) and finish - Oak or Walnut Wilsonart laminate
- For optional Lights, specify Light ADD and add \$389 per PAIR of doors.
- For Medium or Dark Bronze anodized finish in lieu of satin anodize, specify Trophy Case BA ADD and add \$2,401.
- For powder coat finish in lieu of satin anodize, specify Trophy Case PC ADD and add \$781.

Case Number	Size (HxW)	Masonry Opening	Pairs of Doors	Weight	Price	Optional Number	Wood Box Weight	Price
372	4' x 4'	44-5/16" x 44-5/16"	1	192 lbs.	\$4,266	372WB	80 lbs.	\$1,501
373	4' x 6'	44-5/16" x 68-5/16"	1	288 lbs.	\$5,078	373WB	120 lbs.	\$1,586
374	4' x 8'	44-5/16" x 92-5/16"	2	384 lbs.	\$7,548	374WB	160 lbs.	\$1,682
375	4' x 10'	44-5/16" x 116-5/16"	2	480 lbs.	\$8,406	375WB	200 lbs.	\$1,773
376	4' x 12'	44-5/16" x 140-5/16"	3	576 lbs.	\$11,002	376WB	240 lbs.	\$2,569
378	4' x 16'	44-5/16" x 188-5/16"	3	768 lbs.	\$12,430	378WB	320 lbs.	\$2,757

390 Large Door Recessed Display Case

Features:

- Super-heavy satin anodized aluminum frame; 4" face; corners mitered for rigidity
- Tackable back panels in Calyx Cork, Fabricork, Guilford of Maine FR701 Fabric, and Hook-Fab. See page 56 for color selection.
- 1/4" tempered glass sliding doors with lock and key – similar to patio doors
- Three 6-, 8-, 10-, or 12-inch wide glass shelves with standards and brackets
- Dimensions given are overall, including trim
- Standard sizes are shown; cases can be constructed in virtually any size required



Note: Always specify type and color of back panel; width of glass shelves and whether wood box and/or light are required. Lights, when required, are installed but wiring is not included.

Options:

- For Medium or Dark Bronze anodized finish in lieu of satin anodize, specify Large Door BA ADD and add \$3,362.
- For powder coat finish in lieu of satin anodize, specify Large Door PC ADD and add \$1,204.
- Wood box (specify depth) up to 24", is 1/2" thick Oak or Walnut Wilsonart laminate

Case Number	Size (HxW)	Doors	Weight	Price	Optional Wood Box Number	Weight	Price	Optional Light Number	Price
394	6' x 6'	2	360 lbs.	\$6,871	394WB	180 lbs.	\$2,982	394FL	\$800
395	6' x 8'	2	480 lbs.	\$9,100	395WB	240 lbs.	\$3,151	395FL	\$900
396	6' x 10'	3	600 lbs.	\$11,635	396WB	300 lbs.	\$3,979	396FL	\$1,000
397	6' x 12'	4	720 lbs.	\$13,401	397WB	360 lbs.	\$4,978	397FL	\$1,100
398	6' x 14'	4	840 lbs.	\$15,600	398WB	420 lbs.	\$5,215	398FL	\$1,200
399	6' x 16'	4	960 lbs.	\$16,800	399WB	480 lbs.	\$5,452	399FL	\$1,300

All items on this page ship Freight Class 125.

Conference Room Tools

Contemporary Style Wood Lecture Unit

Features:

- Contemporary cabinets feature radius corners (square corners optional)
- Low gloss porcelain enamel steel writing surface
- Furnished with 1 white sketching pad, 4 assorted LCS markers, and 1 microfiber eraser cloth
- Concealed Z-bar hangers for easy and secure installation

Options:

- See page 56 for other materials and colors for inside of door(s)
- Matching credenza. Call for price.



Finish	Size (HxW)	Doors	Weight	Number	Price
Walnut	4' x 4'	2	110 lbs.	508-4WN	\$4,645
Walnut	4' x 6'	2	160 lbs.	508-6WN	\$5,484
Natural Oak	4' x 4'	2	110 lbs.	509-4N	\$4,495
Medium Oak	4' x 4'	2	110 lbs.	509-4M	\$4,495
Natural Oak	4' x 6'	2	160 lbs.	509-6N	\$5,443
Medium Oak	4' x 6'	2	160 lbs.	509-6M	\$5,443
Mahogany	4' x 4'	2	110 lbs.	512-4MS	\$4,066
Mahogany	4' x 6'	2	160 lbs.	512-6MS	\$4,926
Maple	4' x 4'	2	110 lbs.	516-4MA	\$4,297
Maple	4' x 6'	2	160 lbs.	516-6MA	\$5,249
Cherry	4' x 4'	2	110 lbs.	517-4CH	\$4,181
Cherry	4' x 6'	2	160 lbs.	517-6CH	\$5,072

Options	Specify Order As	Size (HxW)	Price
Optional Light	Light add		\$405
Optional Lock and Key	Lecture Lock add	4' & 6' units	\$112
Deduct for no finish	Unfinish Lecture 2'	2' units	\$102
	Unfinish Lecture 4'	4' units	\$177
	Unfinish Lecture 6'	6' units	\$213
Extra Sketching Pads (4 pads per carton)	ESP20x34	20" x 34"	\$160
LCS inside doors In lieu of bulletin board	Lecture LCS 2' add	2' Size	\$35
	Lecture LCS 4' add	4' Size	\$93
	Lecture LCS 6' add	6' Size	\$139

Contemporary Style Laminate Lecture Unit

Features:

- Laminate lecture units have square self-edge profile and square corners
- Laminate finish is exceptionally durable and has excellent scratch resistance
- Select from standard Wilsonart laminate colors
- Lecture unit features Low Gloss porcelain enamel steel writing surface
- Tan Nucork tackboards inside doors have display rail with cork insert and spring clip hooks for tacking or hanging charts
- Furnished with 1 white sketching pad, 4 assorted LCS markers, and 1 microfiber eraser cloth
- Concealed Z-bar hangers for easy and secure installation



Number	Finish	Size (HxW)	Weight	Price
518-4PL	Laminate	4' x 4'	110 lbs.	\$5,899
518-6PL	Laminate	4' x 6'	160 lbs.	\$7,224

All items on this page ship Freight Class 125.

Conference Room Tools

344 Wave Lectern

Features:

- Inspired design features curved solid wood sides with a wavy laminate front panel
- Lectern height is approx. 44"; width, 21"; depth, 18"
- Sloped reading surface is 16-1/2" x 21"; storage shelves
- Glides furnished

Options:

- For precision milled graphic or logo on lectern front, call for pricing.



344 Lectern shown with optional milled logo

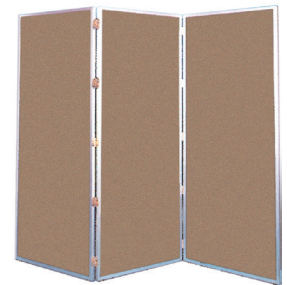
Number	Finish	Weight	Price
344	Black Hardwood/Cherry Laminate	76 lbs.	\$2,167

Freight Class 175

725 Folding Screen

Features:

- Screens are lightweight, yet durable; an economical, effortless way of providing privacy
- Tan Nucork panels have aluminum frame with double action hinges
- Nucork panels can be used as they are, painted, or papered by owner
- Fold nearly flat for storage



Number	Frame Finish	No. of Panels	Size (HxW)	Weight	Price
725	Satin Anodize	3	60" x 72"	55 lbs.	\$1,908
725A	Satin Anodize	3	68" x 72"	60 lbs.	\$2,064
725B	Satin Anodize	3	80" x 72"	70 lbs.	\$2,340
725C	Satin Anodize	4	60" x 96"	74 lbs.	\$2,340

Freight Class 70

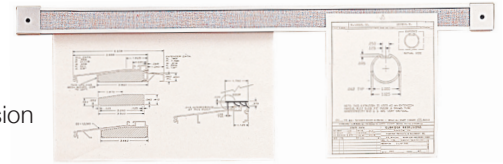
Map and Display Rails

Utilize Map and Display Rails installed on boards or directly to wall to add exhibit space. Ideal for displaying artwork, photos, posters and more. Select from a wide range of design options, finishes and insert choices.

79 Hang-Tight Rail System

Features:

- Combines standard aluminum map and display rail with a specially designed extrusion that holds posters, pamphlets, blueprints, etc., securely in place without tacking
- For easy removal, simply pull up and out
- Tackable insert is approx. 1-5/8" wide, available in your choice of materials and colors. See page 56 for options
- Rail and gripping mechanism are made of heavy gauge aluminum
- HT79 weighs approximately 1 lb. per lin. ft.



Number	Length	Price
HT79-2	2'0"	\$110
HT79-4	4'0"	\$153
HT79-6	6'0"	\$211
HT79-8	8'0"	\$252

EDR Exhibit Rail

Features:

- EDR offers an attractive and economical way of adding exhibit space
- Rail is 3" wide and features a Fabricork tackable insert
- Mounts with 3/4" flat head screws (furnished) or with your double-sided tape
- EDR Rail weighs approximately 1/2 lb. per. lin. ft.

Options:

- See page 56 for insert colors available.



Number	Price	Length	Number*	Price
EDR3	\$83	3'	EDR3-6	\$437
EDR4	\$104	4'	EDR4-6	\$503
EDR6	\$132	6'	EDR6-6	\$635
EDR8	\$161	8'	EDR8-6	\$768
EDR12	\$218	12'	EDR12-6	\$997

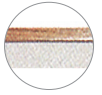
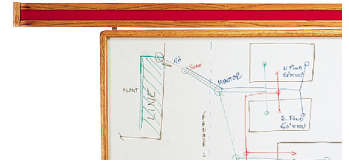
* 6 per package

Map and Display Rails

WDR Wooden Display Rail

Features:

- WDR is available in 2 widths – approx. 3" wide with a 1-1/2" tackstrip and approx. 4" wide with a 2-1/2" tackstrip
- Rail mounts directly to wall and can butt to door facing or corner moldings. End stops (furnished) provide a finished look in any length
- Tackable insert in Calyx Cork, Fabricork, Guilford of Maine FR701 Fabric, and Hook-Fab. See page 56 for colors
- Natural Oak finish
- Available in several finishes as well as unfinished to be painted or finished on the job to match existing walls



Freight Class 85

Options:

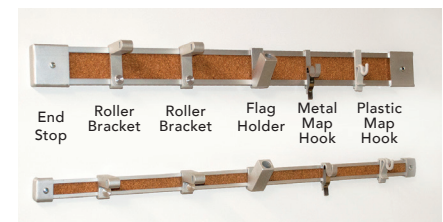
- For optional 87 Clips for hanging small boards that use keyhole type hangers directly from WDR rail, specify and ADD \$11.

Number	Width	Length	Weight	Price
WDR82-2	3"	2'	1.5 lbs.	\$131
WDR82-4	3"	4'	3 lbs.	\$201
WDR82-6	3"	6'	4 lbs.	\$287
WDR82-8	3"	8'	6 lbs.	\$343
WDR83-2	4"	2'	2 lbs.	\$159
WDR83-4	4"	4'	4 lbs.	\$211
WDR83-6	4"	6'	6 lbs.	\$294
WDR83-8	4"	8'	8 lbs.	\$354

Economy and Deluxe Map & Display Rail

Features:

- 51EZ aluminum rail is 1" wide with a 5/8" tan cork insert (unless otherwise specified); 74EZ rail is 2" wide with a 1-5/8" tan cork insert
- Recessed screw guide insures easy installation – angled design keeps insert in place
- Furnished with 1-1/2" pan head screws



	Economy Number	Price	Deluxe Number	Price	Length/Description
Rail	51EZ	\$9.43	74EZ	\$12.00	Less than 100 lin. ft.
	51EZA	\$9.43	74EZA	\$12.00	100 to 200 lin. ft.
	51EZB	\$9.43	74EZB	\$12.00	200 lin. ft. and over
Accessories	51D	\$5.20	74D	\$8.06	Display Rail no insert
	51C	\$2.60	76	\$3.62	Plastic Map Hook
	51M	\$2.79	76M	\$3.84	Metal Map Hook
	51RB	\$15.15	76RB	\$16.16	Roller Brackets
	FH1	\$7.00	FH2	\$7.12	Flag Holders
	51EZPES	\$2.50	74EZES	\$13.00	End Stops
	52ES	\$1.30	75ES	\$4.00	Flat End Stops

Freight Class 85

- Standard lengths for 51EZ: 6'6", 8'6", 10'6", 12'6" and 16'6". 74EZ standard lengths are 6'3", 8'6", 10'6", 12'6" and 17'0".
- 51EZ weighs approx. 1/4-lb. per lin. ft.; 74EZ weighs 1/2-lb. per lin. ft.

LCS Panel Additions

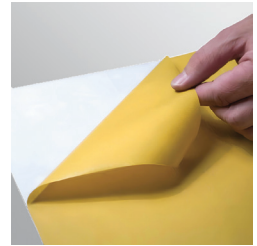
The most practical way to rejuvenate old markerboards and chalkboards – use LCS Skins (Face Sheets) over existing badly-worn boards. Framed EZ Fit panels provide yet another option for resurfacing old boards. See page 27 for color options.

LCS Skins with Double-Sided Tape

Features:

- LCS porcelain enamel steel skins backed with double-sided tape make resurfacing existing boards a breeze
- Measure to verify fit, clean old board surface, position new skin, peel, and stick – it's that easy
- EZ Stick Skins installations use no solvents, eliminate drying time, and are always a consistent thickness
- Face sheets are shipped precut to customer's specifications

Number	Std. Height	Std. Length	Price/sq.ft.
EZ Stick Skins	4'0"	4', 6', 8', 10', 12'	\$21



For cutting to non-standard sizes – vertical and/or horizontal – add \$1.20 per lin. ft. A \$68 packing charge will be added to orders for less than 200 sq. ft.

LCS EZ Fit Panels: 3/8" Face Trim

Features:

- EZ Fit panels are designed to fit over existing boards
- Panels are White LCS porcelain enamel steel on Medium Density Fiberboard (MDF) core with a moisture barrier back
- Holes are pre-drilled 2' on center; 1" self-tapping screws included
- Satin anodize aluminum trim

Number	Size (HxW)	Weight	Price
EZL244	4' x 4'	44 lbs.	\$442
EZL246	4' x 6'	66 lbs.	\$615
EZL248	4' x 8'	88 lbs.	\$838
EZL2410	4' x 10'	110 lbs.	\$1,051
EZL2412	4' x 12'	132 lbs.	\$1,217
EZL2416	4' x 16'	176 lbs.	\$1,601



LCS Markerboard Panel

Features:

- LCS porcelain enamel steel surface mounted on either 7/16" or 1/4" MDF core with a moisture barrier back. Standard height is 4'0"; standard lengths are 4', 6', 8', 10', 12', and 16'
- Made from enameling grade steel during a 3-coat process, the LCS markerboard surface writes smoothly and erases cleanly
- Use with screw-on trim shown on page 53, for custom framing or for OEM applications



Number	Core	Price/sq.ft.
LCS-315-M	1/4" MDF core	\$18.63
LCS-217-M	7/16" MDF core	\$21.12

LCS is available in 5'0" heights. Call for pricing and availability.
For cutting to non-standard sizes – vertical and/or horizontal – add \$1.20 per lin. ft.
A \$68 packing charge will be added to orders for less than 200 sq. ft.

Accessories and Miscellaneous

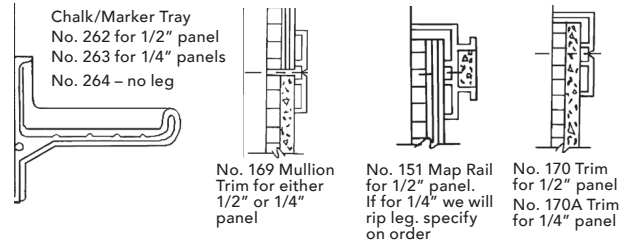
Field Assembled Screw-on Aluminum Trim

Features:

- Screw-on trim, with exposed fasteners is noted for ease of installation
- Use on field-assembled markerboards, chalkboards, tackboards, or combinations
- Accessory Tray, Mullion Trim, Perimeter Trim and Display Rail available

Note: Weight and price are shown per lineal ft.

Number	Description	Weight per Lin. Ft.	Price per Lin. Ft.
262	Chalk/marker tray	1 lb.	\$17.69
262R-L	R/L End Closures (pr)		\$10.00
263	Chalk/marker tray	.75 lb.	\$13.00
264	Chalk/marker tray	.75 lb.	\$15.00
169	Mullion Trim	.5 lb.	\$6.30
170	Trim	.5 lb.	\$6.30
170A	Trim	.5 lb.	\$6.20
151	Map Rail – 1/2" leg	.5 lb.	\$9.24
151A	Map Rail – 1/4" leg	.5 lb.	\$11.23
151M	Map Rail – no leg	.5 lb.	\$9.24



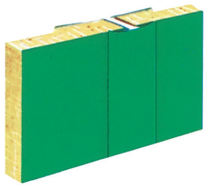
Stock Lengths:

- Nos. 262, 263, 264, 169, 170, 170A and 151 are available in 8'6", 10'6", 12'6", 17' and 21' lengths. Specify lengths required.

Order Information:

- Always specify NUMBER of pieces required, lengths required and if trim is to be used with 1/4" or 1/2" panels.

H-Bar

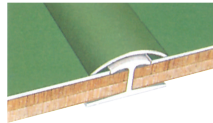


Features:

- Use colored aluminum H-bars for joining 2 or more panels
- H-bar has a 1" face and a 1/2" opening
- Available in lengths up to 12'

Name	Price/Lin. Ft.
H-Bar	\$5.98

66 Extruded Aluminum Joint



Features:

- Designed to fit over H-bar, 66 Joint is 1" wide
- Finished to match writing surface, it covers existing joint and overlaps face sheet
- Furnished with double-sided tape for easy installation
- Available in lengths up to 12'

Name	Price/Lin. Ft.
66	\$7

Accessories and Miscellaneous

Adhesive

Features:

15 Adhesive - Used for installing unmounted tackboard panels

- Available in 1-gallon cans; coverage varies from 80 to 100 sq. ft.

16 Adhesive - Ultra-low VOC, non-flammable, high performance construction adhesive used for installing framed markerboards, chalkboards, and tackboards as well as unframed panels

- Available in 28 oz. tubes and 5-gallon cans; 1 gallon covers approx. 160 sq. ft. area of factory framed boards or 80 sq. ft. area of materials.

17 Adhesive - Used for installing fabric only (936 Hook-Fab, 3106 Guilford of Maine FR701 Fabric, and 1499 Fabricork vinyl fabric)

- Available in 1-gallon cans; coverage varies from 80 to 100 sq. ft.

Note: Not intended for use when installing fabric as a wall covering.

18 Adhesive - Water-based adhesive designed for the installation of wall panels over clean, dry, and sound wall surfaces finished to a Level 4 or Level 5

- One gallon covers approx. 100 sq. ft.



Number	Description	Weight	Price
15G	1 gallon	10 lbs.	\$105
16AT	28 oz. tube	2.75 lbs.	\$65
16A-5G	5 gallon	50 lbs.	\$615
17G	1 gallon	10 lbs.	\$101
18AG	1 gallon	10 lbs.	\$213

5 tubes = 1 gallon

Roller and Trowel

Features:

Serrated Steel Trowel

- Ideal for spreading markerboard or chalkboard adhesive – is made of masonry trowel steel with a serrated edge with 1/8" notches

Pressure Roller

- Lightweight rubber roller designed for installing replacement skins on existing board surfaces.



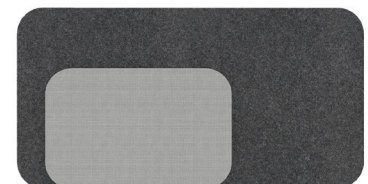
Number	Description	Weight	Price
65	Serrated Steel Trowel	5 lbs.	\$37
64	Pressure Roller	4 lbs.	\$116

Note: A 2-handed roller similar to one used for laying floor tile or linoleum is required for installing vertical wall panels or large runs of markerboard skins.

TacPad

Tackable surface in fabric or acoustic material with rounded corners. Rare earth magnetic backing. Available in 2 sizes.

GS-TP-1409	9"h, 14"w, .13"d	.5 lb.	\$295
GS-TP-2714	14"h, 27"w, .13"d	1.5 lb.	\$385
GS-TP-1409-EW	9"h, 14"w, .13"d	1 lb.	\$207
GS-TP-2714-EW	14"h, 27"w, .13"d	3 lb.	\$277



Accessories

Dry-Erase Markers

Four broad-tipped markers - red, blue, green and black.



LCS673-4	1 lb.	\$20
----------	-------	------

Freight Class 100

Dry-Erase Cloth

12" x 12" Microfiber eraser cloth. Erases cleanly with no smearing. Designed to reduce marker residue build-up.



ECM227E	1 cloth	.5 lb.	\$9
ECM227D	1 dozen cloths	2 lbs.	\$89.48

Freight Class 100

Dry-Erase Kit

Four dry-erase markers and one Microfiber cloth.

LCS668-4	.5 lb.	\$28
----------	--------	------

Freight Class 100

Magnetic Eraser

The black felt eraser surface cleans your board with ease. Strong rare earth magnets hold it on the board. 4-1/2" long, 2-1/8" wide and 7/8" thick.



MGM-ME1	.5 lb.	\$31
---------	--------	------

Freight Class 70

Markerboard Cleaner

Cleans and restores LCS Porcelain enamel steel markerboard surfaces. 8 oz. pump spray.



LCS683	1 lb.	\$13.50
--------	-------	---------

Freight Class 70

Rare Earth Magnets

Calyx rare earth magnets, designed specifically for use on magnetic glass boards are 1.29" square and .44" thick. Colors available in black, white and gray.



MGM-REMSQ-B, -W, -G	1 oz.	\$22
---------------------	-------	------

Freight Class 70

Marker Caddy

Sculpted plastic magnetic holder with rare earth magnets. Holds up to 8 markers or two markers and one microfiber cloth or standard eraser.



MGM-MC1-S	3 1/2"h, 3 1/8"w, 1-3/4"d	.5 lb.	\$34
MGM-MC1-M	4"h, 4-1/2"w, 2-1/5"d	.5 lb.	\$37
MGM-MC1-L	4"h, 8-1/2"w, 2-2/5"d	.5 lb.	\$42

Freight Class 70

Slim Marker Caddy

Lightweight aluminum with rare earth magnet backing measures 1-3/8" H, 9" W, and 1-3/8" D. Holds 4 markers and one microfiber cloth or standard eraser. Available in satin anodize finish or 24 standard aluminum trim colors.



M-MC2	.5 lb.	\$106
M-MC2P	.5 lb.	\$110

Magnetic Aluminum Tray

Strong rare earth magnets hold this satin anodize aluminum tray in place, yet allow the flexibility to re-position when needed. Fabric-backed tray has eased corners and measures 12" long, 1-1/2" high, 3" deep and will easily hold markers and eraser.



MGM-T1	12" length	1 lb.	\$183
--------	------------	-------	-------

Freight Class 70

Magnetic Aluminum Tray

Slim satin anodized aluminum tray. 267M1 for use on porcelain surface; 267MG1 for use on glass surface

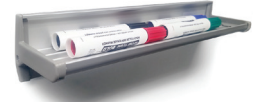


267M1	12" length	.5 lb.	\$63.50
267MG1	12" length	.5 lb.	\$137
267MG1-P	12" length	.5 lb.	\$143

Freight Class 70

Magnetic Aluminum Tray

Satin anodized aluminum tray. For use on porcelain markerboard.



264M1	12" length	1 lb.	\$79
-------	------------	-------	------

Freight Class 70

Adhesive-Backed Tray

Satin anodize aluminum tray stays in place with double-sided tape and holds markers and erasers in one permanent location. Tray is 12" long, 2-7/16" high, and 2-11/16" deep. (For both porcelain and glass boards.)

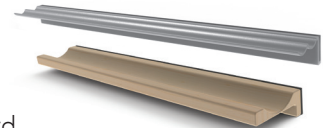


GM-Tray-1	12" length	1 lb.	\$81
-----------	------------	-------	------

Freight Class 70

Magnetic AT Trays

Available in aluminum and wood with two extra strong magnets. For use on porcelain markerboard.

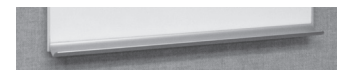


AT-12-ALUM	12" length	1 lb.	\$57
AT-12-WOOD	12" length	1 lb.	\$122

Freight Class 70

Fixed Marker Tray

Concept markerboard tray per linear feet.



Number	Weight	Price
CP-TRAY-Add	.5 lb	\$12

Freight Class 70

Partition Panel Clip

Spring steel clips fit over the top of any 2" thick partitions. Small prongs fit underneath the board trim. Two each.

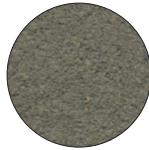


80	2"	.5 lb.	\$47
80-3	3"	.5 lb.	\$60

Freight Class 70

Tack Color Options

Calyx CORK:



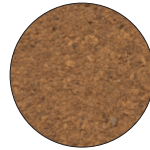
1108 Mushroom



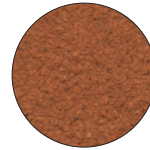
1109 Buff



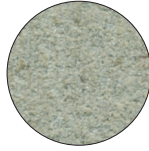
1110 Fawn



1100 Tan



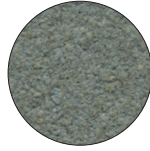
1104 Cinnamon



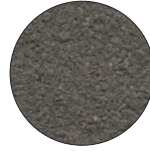
1103 Oyster



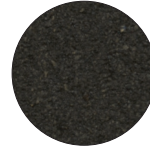
1111 Smoke



1113 Steel Gray



1136 Graphite

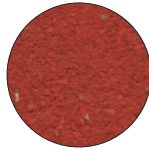


1132 Black

NUCORK:



Tan



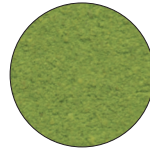
1117 Salsa



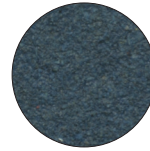
1118 Tangerine



1119 Pineapple



1120 Lettuce

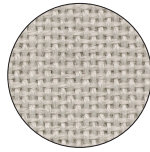


1129 Blueberry

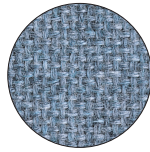
GUILFORD OF MAINE FR701 FABRICS:



1684 Black



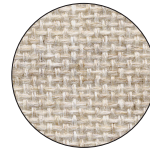
1686 Dark Pearl



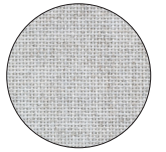
1689 Wedgewood



1690 Grey Mix



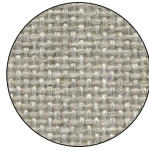
1691 Quartz



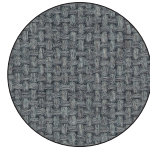
1683 Silver



1692 Wheat



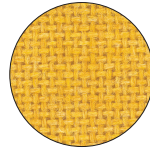
1681 Cement Mix



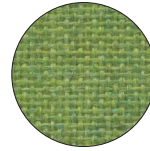
1685 Flannel



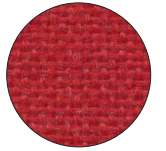
1688 Cobalt



1693 Sunshine



1680 Lime



1679 Cardinal

FABRICORK:



KV216 Ecru



KV230 Oyster



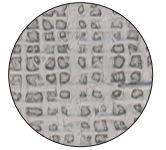
KV233 Driftwood



KV237 Curry



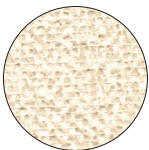
KV241 Wheat Straw



KB662 Gray



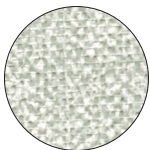
KB290 Sterling



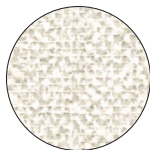
KL404 Dorset



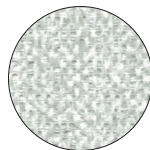
KL412 Ancestral



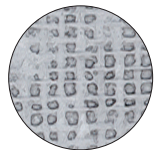
KL483 Downing Stone



KL490 Rectory



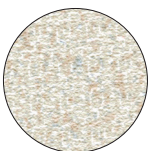
KL498 Winthrop



KB661 Dawn



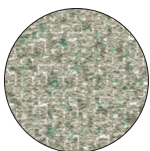
KB664 Antique



KE510 Runway



KE522 Innocent



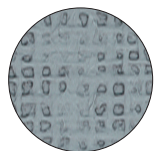
KE584 Power



KE591 Counselor



KE592 Gentleman Gray



KB278 Pacific

HOOK-FAB:

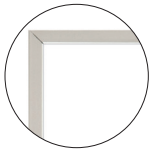


976 Black

Frame Styles and Color Options

FRAMES: STYLE OPTIONS

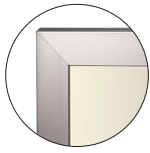
Anodized Aluminum



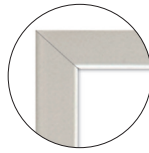
3/8" Face
Mitered Corners
Envision Graphics
Merit Series



5/8" Face
Mitered Corners
LCS Deluxe | 800 Series



1" Face
Mitered Corners
Trimline



1-1/4" Face
Mitered Corners
1300 Series
900A Series



1-3/4" Face
Mitered Corners



1" Face
Mitered Corners



2" Angle Face
Mitered Corners



1-7/16" Traditional Face
Mitered Corners



1" Bullnose Face
Radius Corners



1-3/4" Flat Face
Radius Corners
2900 Series



2" Concave Face
Mitered Corners

Frame Finishes

Frames available in aluminum or wood. Aluminum frames in satin anodize or Medium or Dark Bronze color anodize, powder coat in 302P Black and 314P Bronze, standard powder coat finishes, three textured finishes and five transparent powder coat finishes. Wood frames are available in a variety of finishes. See page 27 for Standard powder coat finishes.

Wood Finishes



Natural Oak



Medium Oak



Maple



Mahogany



Cherry



Walnut

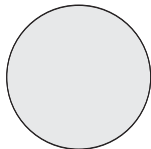


Espresso

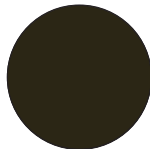


Ebony

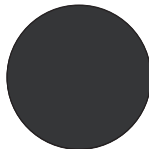
Aluminum Finishes



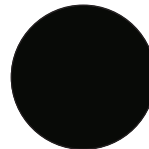
Satin Anodized



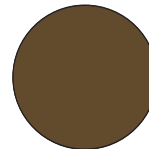
Medium Bronze



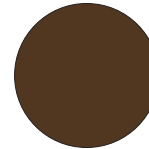
Dark Bronze



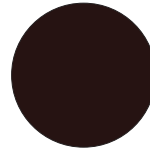
302P Matte Black



314P Bronze



360P Bronze



313P Bronze

Optional Textured Finishes



Goldtone Vein

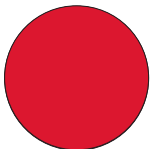


Antique Copper
Vein

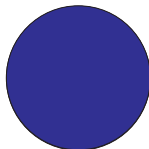


Bonded Silver
Vein

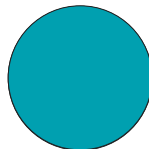
Optional Transparent Finishes



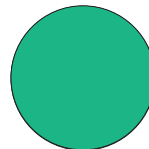
Candy Red



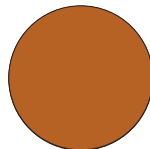
Candy Purple



Candy Teal



Transparent
Green



Copper Powder

Colors are reproduced with reasonable accuracy. If match is critical, call or write for samples.

Talk to a Calyx by
Claridge writing surface
expert today to learn
how we turn workspaces
into idea places.