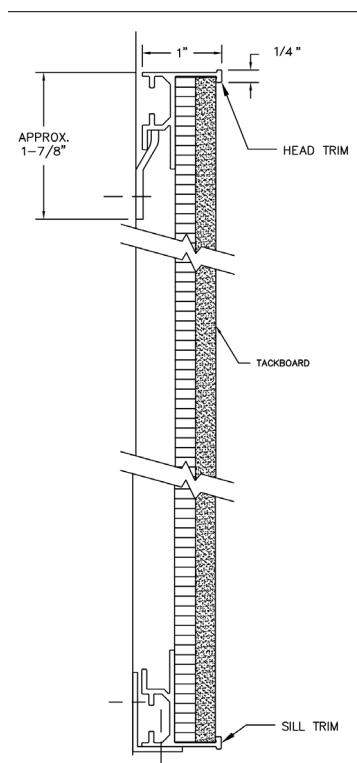
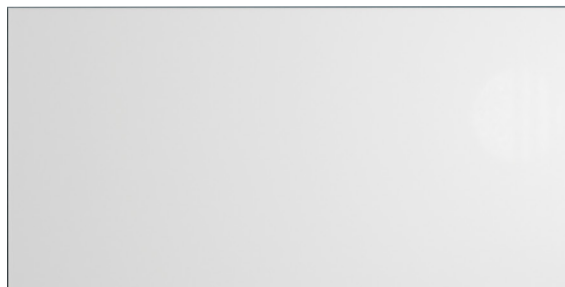




CONNECT X2 Markerboard, Tackboard, Modular

INSTALLATION INSTRUCTIONS



Tools Needed

Drill/Driver
Level
Straight Edge
Tape Measure
Hammer
Safety Glasses

Instructions

- Determine desired height of the top of the board and mark the wall.
- Measure down 1 7/8" from desired mark and make a level line.
- Place the bottom of the continuous hanger on the line and drill in the center of the slots. With appropriate wall fasteners secure the hanger to the wall.
- From the desired height mark measure down the height of the board minus 1/2" and make a level line.
- Starting 3" from where the edge of the board will be placed. Drill on the line spacing the L Clips evenly across the bottom.
- Secure the L Clips with the appropriate wall fasteners letting the L Clip hang on the fastener. Do not overtighten. This will allow the L Clip to be adjusted.
- With a straight edge check hanger and L Clips for flatness. Shim accordingly.
- Raise the top of the board slightly higher than the hanger on the wall. Hold the board against the wall while lowering to ensure the boards built in hanger engages with the hanger on the wall.
- Tap the L Clips up and secure the board with the screws provided.

WARNING

Risk of injury to installers and users
Read the entire assembly directions
before beginning assembly.

Note: If the board has a middle hanger. Lay the board face down and engage a hanger. Measure from the top of the board to the bottom of the engaged hanger. Measure down from the desired height mark that measurement and make a level line. Place the bottom of the continuous hanger on the line and drill in the center of the slots. With appropriate wall fasteners secure the hanger to the wall.



800-434-4610
calyxbyclaridge.com