



calyx by Claridge

CORE PRODUCT OFFERINGS

2024 CATALOG

For years, the Calyx by Claridge name has been synonymous with quality, service and innovation.

Our products can be found in gleaming new offices, prestigious colleges and universities, respected hospitals and schools across the country. Calyx offers a complete set of solutions for the new world of work – no matter what type of work you do.

From the workplace to the classroom, the emphasis today is on performance, productivity, and a pleasing environment. Calyx visual display products and accessories offer unmatched performance and high style. A state-of-the-art production facility enables our skilled team to control quality at every step in the process. In addition to offering a broad selection of standard colors, surfaces and finishes, we can custom-craft most products to perfectly suit any space or task. Let our friendly and knowledgeable customer service staff help you create exactly what you need.

For custom product orders, Calyx Priority Response and On-Time Shipping provide a firm ship date.

We also conduct a number of “green” initiatives—from in-house recycling programs to using renewable resources and alternative materials—to reduce our environmental footprint and minimize exposure to harmful substances. We listen and react to our customers’ needs and concerns.

At Calyx by Claridge, we work to earn your trust and satisfaction from start to finish. That’s the way we do business — today and always.

Weights in the catalog are estimates only and can vary with method of packing.

contents

The Calyx Core Products Catalog is organized by product line. Detailed outlines of product specifications, ADDs, and additional options are designed to help you select the ideal product to suit your needs. Main product options (colors, surfaces, trims and finishes) are highlighted on pages 6 and 7 for markerboard and tackboard products.

ORDERING DETAILS 4

MARKERBOARDS, CHALKBOARDS, AND TACKBOARDS

Colors & Frame Options 6
Tackboard Surface Options 7
Glass Markerboards 8
LCS Deluxe 9
800 Series 10
Aluminum Framed 11-12
Xchange and Custom Graphic 13
Wood Framed 14-15
Edge-Wrapped 15

MARKER WALLS & TACK WALLS 16

MOBILE BOARDS 17-18

HORIZONTAL SLIDING UNITS 19

GLASS DOOR CABINETS

Aluminum Frame 20-23
Wood Frame 24
Header Panel 24

DISPLAY & TROPHY CASES

Freestanding 25-26
Wall Mounted 27
Recessed 28

CONFERENCE ROOM TOOLS

Lecture Cabinets 29
Lecterns 30
Folding Screens 30

ACCESSORIES & MISCELLANEOUS

Map, Display Rail 30-31
Screw-In Trim and Miscellaneous 32
Markerboard & Chalkboard Accessories 33

MATERIALS & FINISHES

Face Sheets & Panels 34
Calyx Cork 35
Guilford of Maine Fabrics 35
Fabricork 36
Tan Nucork 36
Hook-Fab 37
Wood & Aluminum Finishes 38

COMMERCIAL TERMS & CONDITIONS 39

ordering details

Customized Product Solutions

Draw up a design, talk with our helpful staff, and we'll build your vision. Calyx specializes in creating products to suit any situation and environment. From custom match wood finishes, colors, and fabric surfaces to markerboards and cabinets built to fit a unique space, we offer made-to-order solutions for any business need.

Calyx Priority Response

At Calyx, we believe that custom orders merit custom service – including fast shipment. With Calyx Priority Response (CPR) we guarantee your order for custom products will be shipped in three weeks, two weeks, or even one week, based on the level of CPR service selected. In the unlikely event that a delay occurs, we pay you a 10% penalty for every day of delayed shipment. Why wait to put your custom Calyx solutions to work? With CPR, you don't have to! Talk to a customer service representative for available options.

On-time Shipping

Calyx's On-Time Shipping helps customers plan and manage schedules more effectively – and meet expectations for timely shipment of quality products. For standard or made-to-order products, a projected shipping date is normally provided within 72 hours of receipt of order. Flexibility built into custom manufacturing systems, coupled with an ability to coordinate and manage process flow, results in consistent on-time shipments that customers can rely on.

Total Fulfillment Solution

For 75 years, Calyx has been the leader in quality, craftsmanship and customer service. Our Total Fulfillment Solution provides three ways to better serve our customers: 1) On-Time Shipping—Orders for custom and made-to-order products are normally acknowledged in 72 hours. 2) CPR – When time is of the essence, you choose whether your order ships in one week, two weeks or three, just let us know. Calyx is your #1 source for Visual Display Products!

Environmental Practices

Calyx is committed to protecting and preserving our natural environment through a variety of ongoing programs. Calyx markerboard surfaces have achieved both SCS Indoor Advantage Gold Certification. SCS Indoor Advantage Gold Certification helps fulfill the goal of creating and maintaining healthy, high-performing buildings, schools and residences. Calyx Cork is made from the bark of cork oak trees without damaging the tree itself—making it both rapidly renewable and recyclable. Calyx carton and crating materials are composed of post-industrial and recycled materials. Tons of material are eliminated from the landfill waste stream through Calyx in-house recycling programs.

Ordering Tips

Orders may be faxed or e-mailed to the Calyx location nearest you (see back cover for a listing of Calyx sales offices), or e-mailed to orders@claridgeproducts.com for proper routing. Specify type of material and color, trim finish, and size on all orders. Also include contact and billing information – name, telephone number and e-mail address, along with billing and shipping addresses, and purchase order. Specify if expedited shipping (CPR) is required.

Shop Drawings

Shop drawings may be required for custom lined and lettered markerboards and other special, custom designed products. Shop drawings will be furnished at a charge of \$50 NET per hour, with a minimum one hour charge.

Ground Shipments

Most items up to and including 36" x 48" and not over 100 lbs. can be shipped by UPS. (Note: Dimensional weight, rather than actual weight, and oversize charges may apply.) Catalog indicates freight classification for LTL shipments and items that will be shipped by UPS.



Contract Holder

Contract #GS-28F-0042U

Schedule Title: Office Furniture FSC Group 71 Part 1

Contact Us

Calyx by Claridge Headquarters

480 Wrangler Drive, Suite 200, Coppell, TX 75019

Phone: (972) 848-7436 Toll Free: (800) 434-4610

calyxbyclaridge.com

MARKERBOARDS, CHALKBOARDS & TACKBOARDS

Calyx markerboard and chalkboard products are available in a wide range of design options, offering performance, style, and value to suit any situation. Choose from glass or porcelain markerboard and chalkboard surfaces in a variety of colors to add a touch of design flair. Select from a range of aluminum, vinyl, and wood trim options in a variety of colors and finishes to match any decor and budget.

Calyx tackboard products are available in a wide range of design options, offering performance, style, and value to suit any situation. Choose from Calyx Cork, Tan Nucork, Fabricork, Guilford of Maine FR701 Fabric, and Hook-Fab surfaces to match any room and budget. Select from a range of aluminum and wood trim options in a variety of colors and finishes.

Call Calyx customer service at 1-800-434-4610 for assistance with any custom options not covered in the catalog.



WRITING SURFACES:



LCS

- Porcelain enamel steel
- Smooth, dry-erase porcelain surface for easy writing and clean erasing
- Porcelain surface can be used for projection

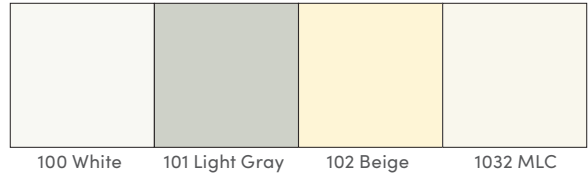
Chalkboard

- Porcelain enamel steel
- Smooth surface insures unsurpassed chalking and erasing qualities

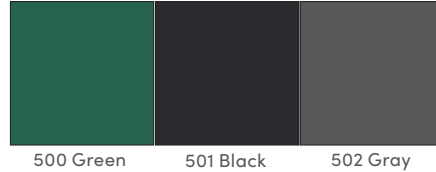
Magnetic Glass

- 1/4" tempered glass
- Silky smooth surface writes easily, erases cleanly
- Virtually maintenance free

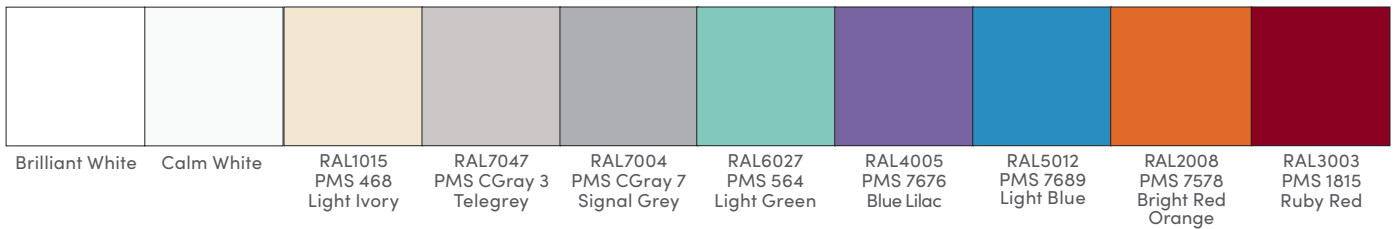
MARKERBOARDS: COLOR OPTIONS



CHALKBOARDS: COLOR OPTIONS



MAGNETIC GLASS MARKERBOARDS: STANDARD COLOR OPTIONS



FRAMES: STYLE OPTIONS

Anodized Aluminum



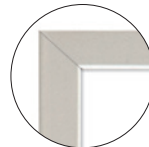
**3/8" Face
Mitered Corners**
Envision Graphics
Merit Series



**5/8" Face
Mitered Corners**
LCS Deluxe | 800 Series



**1" Face
Mitered Corners**
Trimline



**1-1/4" Face
Mitered Corners**
1300 Series
900A Series

Wood: See page 48 for wood finishes



**1-3/4" Face
Mitered Corners**



**1" Face
Mitered Corners**



**2" Angle Face
Mitered Corners**



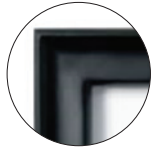
**1-7/16" Traditional Face
Mitered Corners**



**1" Bullnose Face
Radius Corners**

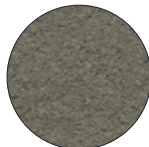


**1-3/4" Flat Face
Radius Corners**
2900 Series



**2" Concave Face
Mitered Corners**

Calyx CORK:



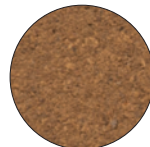
1108 Mushroom



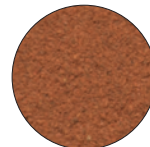
1109 Buff



1110 Fawn



1100 Tan



1104 Cinnamon



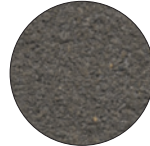
1103 Oyster



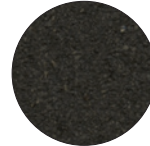
1111 Smoke



1113 Steel Gray



1136 Graphite

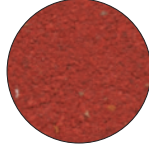


1132 Black

NUCORK:



Tan



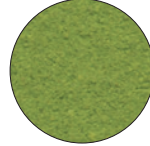
1117 Salsa



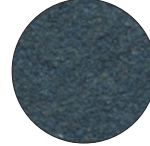
1118 Tangerine



1119 Pineapple



1120 Lettuce

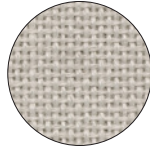


1129 Blueberry

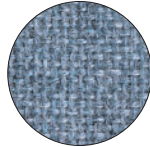
GUILFORD OF MAINE FR701 FABRICS:



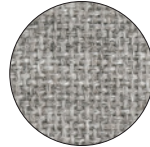
1684 Black



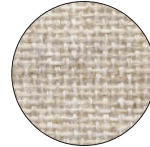
1686 Dark Pearl



1689 Wedgewood



1690 Grey Mix



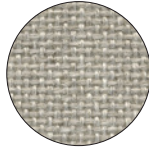
1691 Quartz



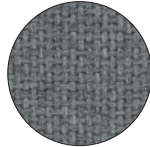
1683 Silver



1692 Wheat



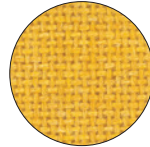
1681 Cement Mix



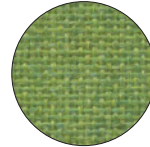
1685 Flannel



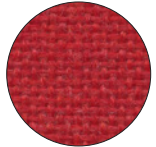
1688 Cobalt



1693 Sunshine



1680 Lime

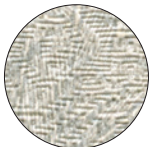


1679 Cardinal

FABRICORK:



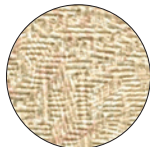
KV216 Ecru



KV230 Oyster



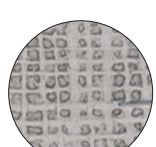
KV233 Driftwood



KV237 Curry



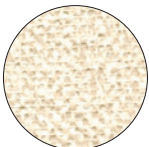
KV241 Wheat Straw



KB662 Gray



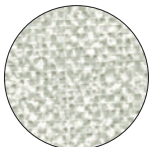
KB290 Sterling



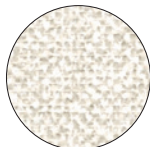
KL404 Dorset



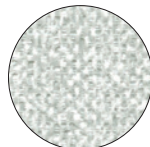
KL412 Ancestral



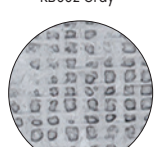
KL483 Downing Stone



KL490 Rectory



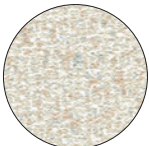
KL498 Winthrop



KB661 Dawn



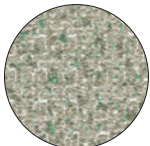
KB664 Antique



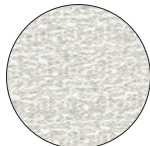
KE510 Runway



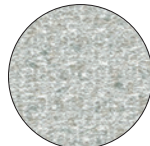
KE522 Innocent



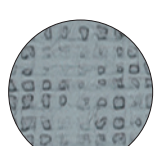
KE584 Power



KE591 Counselor



KE592 Gentleman Gray



KB278 Pacific

HOOK-FAB:



976 Black

Magnetic Glass Markerboard



Stand-Off Mount



Invisi-Mount

Features:

- 1/4" tempered low-iron glass dry-erase writing surface with steel back
- Eased corners and polished edges
- Furnished with 4 rare earth magnets
- Choose brushed stainless edge grips for easy and attractive stand-off mounting (4 per board on sizes through 4x4; 4x6 & 4x8 have 6) or invisimount – no visible hardware
- Furnished in brilliant white if no color specified. 10 standard colors, 180 optional colors.

Stand-Off Mounting	Number	Size (HxW)	Weight*	Price
	MGM23	2' x 3'	48 lbs.	\$897
	MGM34	3' x 4'	96 lbs.	\$1,377
	MGM44	4' x 4'	128 lbs.	\$1,718
	MGM46	4' x 6'	195 lbs.	\$2,488
	MGM48	4' x 8'	256 lbs.	\$3,147

Invisi-Mount	Number	Size (HxW)	Weight*	Price
	MGMI-23	2' x 3'	48 lbs.	\$782
	MGMI-34	3' x 4'	96 lbs.	\$1,233
	MGMI-44	4' x 4'	128 lbs.	\$1,550
	MGMI-46	4' x 6'	195 lbs.	\$2,254
	MGMI-48	4' x 8'	256 lbs.	\$2,861

Note: Specify on order if glass boards are to be installed edge-to-edge.

*Weights shown are estimates only and may vary with packing method.

Glass Markerboard



Features:

- 1/4" tempered glass writing surface with acid etch back
- Polished edges
- Brushed stainless edge grips for stand-off mounting (4 per board on sizes through 4x4; 4x6 & 4x8 have 6)

Number	Size (HxW)	Weight	Price
GM44	4' x 4'	104 lbs.	\$2,063
GM46	4' x 6'	156 lbs.	\$2,834

All items on this page ship Freight Class 70.

LCS Deluxe Markerboard: 5/8" Face Trim



Features:

- Projection-friendly white porcelain enamel steel writing surface
- 5/8" face trim 3 sides with full length 2-1/2" marker tray; satin anodize finish
- Angle clip hangers
- Available with map rail with 2 map hooks
- 4 assorted LCS markers and 1 microfiber eraser cloth
- SCS Indoor Advantage Gold certified

With Map Rail

Number	Size (HxW)	Weight	Price
LCS2034R	3' x 4'	42 lbs.	\$558
LCS2044R	4' x 4'	56 lbs.	\$619
LCS2046R	4' x 6'	84 lbs.	\$856
LCS2048R	4' x 8'	112 lbs.	\$1,072
LCS2410R	4' x 10'	140 lbs.	\$1,416
LCS2412R	4' x 12'	168 lbs.	\$1,619
LCS2416R	4' x 16'	224 lbs.	\$2,163

No Map Rail

Number	Size (HxW)	Weight	Price
LCS2034	3' x 4'	42 lbs.	\$523
LCS2044	4' x 4'	56 lbs.	\$608
LCS2046	4' x 6'	84 lbs.	\$831
LCS2048	4' x 8'	112 lbs.	\$1,039
LCS2410	4' x 10'	140 lbs.	\$1,363
LCS2412	4' x 12'	168 lbs.	\$1,560
LCS2416	4' x 16'	224 lbs.	\$2,085

LCS Deluxe Combo: 1-3/4" Face Trim



Features:

- White porcelain enamel markerboard writing surface on the left; natural tan nucork tack surface on the right
- Natural Oak finish perimeter trim and marker tray
- Z-bar clips
- 4 Assorted LCS Markers and 1 microfiber eraser cloth

Options:

- For Medium Finish Oak frame, specify ADD and add \$19. Other optional wood finishes shown on page 38. If required, specify ADD and add \$109.

Number	Size (HxW)	Weight	Price
LCS1044	4' x 4'	32 lbs.	\$581

All items on this page ship Freight Class 70.

800 Series: 5/8" Face Trim



Available in Markerboard and Chalkboard

Features:

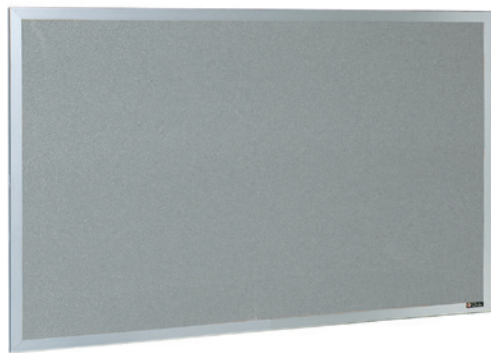
- Porcelain enamel steel writing surface; satin anodize aluminum trim
- White LCS is furnished for markerboards if color not specified. For 800 Series chalkboards, use a "V" suffix in lieu of "L" and specify the chalkboard color required.
Example: 822V No. 500 Green.
- Full length marker tray and map rail with 2 map hooks
- Angle clip hangers (*For permanent installations we recommend using a combination of angle clips and 16A Adhesive.*)
- SCS Indoor Advantage Gold certified

Options:

- See page 38 for powder coat finish colors. Optional powder coat finishes add \$152 for boards up to 4' x 6' and \$200 for boards 4' x 8' and larger.
- For boards without a map rail, specify and deduct \$5.33 per lin. ft.
- For optional color anodized trim, call for price.
- Custom sizes

Markerboard / Chalkboard	Number	Size (HxW)	Weight	Price
<i>Note: Finished size of units is 1/4" larger in both height and width than sizes listed. If exact overall size is required, specify when ordering.</i> <i>800 Series markerboards are also available in 5' x 6', 5' x 8', 5' x 10' and 5' x 12' sizes. Call for pricing.</i>	† 810L	18" x 24"	10 lbs.	\$275
	† 812L	2' x 3'	21 lbs.	\$410
	814L	3' x 4'	42 lbs.	\$538
	818L	4' x 4'	56 lbs.	\$614
	820L	4' x 5'	70 lbs.	\$753
	822L	4' x 6'	84 lbs.	\$792
	826L	4' x 8'	112 lbs.	\$999
	830L	4' x 10'	140 lbs.	\$1,243
	834L	4' x 12'	168 lbs.	\$1,439
	838L	4' x 16'	224 lbs.	\$2,045

800 Series Tackboard: 5/8" Face Trim



Guilford of Maine FR701 Fabric, Fabricork and Tan Nucork tackboards weigh approx. 1.25 lbs. per sq. ft.; Calyx Cork tackboards weigh approx. 3 lbs. per sq. ft.

800 Series and tackboards in Fabricork and Guilford of Maine FR701 Fabric are SCS Indoor Advantage Gold certified.

Features:

- Choose from Calyx Cork, Guilford Fabric, Fabricork, or Tan Nucork.
- Satin anodize aluminum trim
- Angle clip hangers (*Note: We recommend installation using a combination of angle clips and 16A Adhesive*)

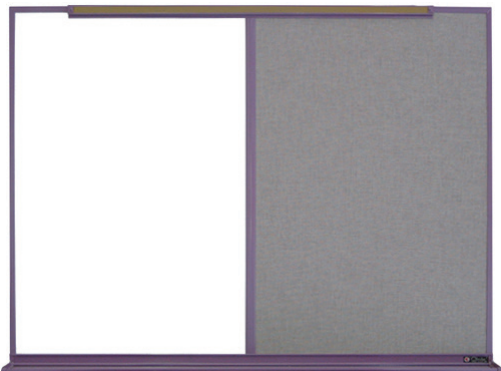
Options:

- Optional powder coat finishes add \$106 for boards up to 4x6 and \$139 for boards 4x8 and larger

Size (HxW)	Calyx Cork Number	Price	Guilford Fabric Number	Price	Fabricork Number	Price	Tan Nucork Number	Price
18" x 24"	† 837CC	\$191	† 837D	\$155	† 837F	\$143	† 837N	\$141
2' x 3'	† 839CC	\$259	† 839D	\$188	† 839F	\$170	† 839N	\$164
3' x 4'	† 840CC	\$425	† 840D	\$263	† 840F	\$228	† 840N	\$230
4' x 4'	844CC	\$508	844D	\$309	844F	\$264	844N	\$275
4' x 6'	852CC	\$718	852D	\$430	852F	\$352	852N	\$368
4' x 8'	858CC	\$943	858D	\$538	858F	\$449	858N	\$486
4' x 10'	862CC	\$1,089	862D	\$688	862F	\$589	862N	\$608
4' x 12'	864CC	\$1,265	864D	\$771	864F	\$649	864N	\$670
4' x 16'	866CC	\$1,723	866D	\$1,357	866F	\$1,149	866N	\$988

† Can Ship UPS Ground. All items on this page ship Freight Class 70.

800 Series Type BR/BL: 5/8" Face Trim



Shown with Optional Powder Coat Finish

Type BR/BL units with Fabricork and Guilford of Maine FR701 Fabric weigh approx. 2 lbs. per sq. ft.; Calyx Cork, approx. 3 lbs. per sq. ft.

To specify the writing surface portion, add L or V after the number: L for LCS Markerboard, V for Chalkboard

To select tack surface add N, D, F, or CC after the writing surface suffix: N for Tan Nucork, D for Fabric, F for Fabricork, CC for Calyx Cork

Note: Finished size of units is 1/4" larger in height and width than sizes listed. If exact overall size required, specify when ordering.

Features:

- Type BR/BL Combination features porcelain enamel steel markerboard or chalkboard writing surface and your choice of Tan Nucork, Fabricork, Guilford of Maine FR701 Fabric, or Calyx Cork tack surface
- Specify width of writing surface and whether it is on the right or the left. Type BR has the bulletin board on the right; Type BL has bulletin board on the left.
- Satin anodize aluminum trim
- Full length accessory tray, map rail with cork insert, and map hooks
- Angle clip hangers (Note: For permanent installation we recommend using a combination of 16A Adhesive and angle clips.)

Options:

- See page 38 for powder coat finish colors. Optional powder coat finishes add \$158 for boards up to 4' x 6' and \$218 for boards 4' x 8' and larger.

Number	Size	Calyx Cork	Fabric	Fabricork	Tan Nucork
864	4' x 4'	\$709	\$632	\$613	\$616
868	4' x 6'	\$908	\$794	\$758	\$751
872	4' x 8'	\$1,188	\$1,024	\$980	\$978

900A Tackboard: 1-1/4" Face Trim



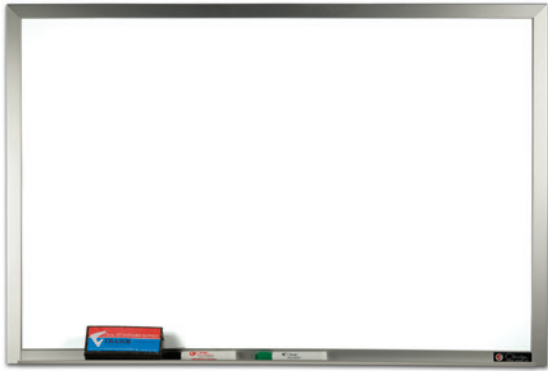
Features:

- Natural Tan Nucork reinforced with sturdy back panels
- Satin anodize trim
- Keyhole hangers

Number	Size (HxW)	Weight	Price
953A	3' x 5'	19 lbs.	\$340
958A	4' x 4'	20 lbs.	\$307
959A	4' x 5'	25 lbs.	\$345
960A	4' x 6'	30 lbs.	\$376
962A	4' x 8'	40 lbs.	\$541
963A	4' x 10'	50 lbs.	\$724
964A	4' x 12'	60 lbs.	\$794

All items on this page ship Freight Class 70.

Trimline Plus: 1" Face Trim



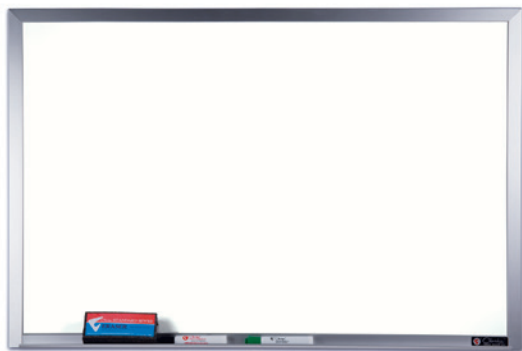
Features:

- White porcelain enamel steel writing surface
- 1" eased face aluminum trim on three sides with small marker tray
- 2 markers and 1 eraser cloth
- SCS Indoor Advantage Gold Certified

Satin Anodize Trim

Number	Size (HxW)	Weight	Price
† TL1824-75	18" x 24"	8 lbs.	\$233
† TL2023-75	2' x 3'	15 lbs.	\$386
† TL2034-75	3' x 4'	28 lbs.	\$471
TL2044-75	4' x 4'	40 lbs.	\$519
TL2046-75	4' x 6'	60 lbs.	\$708
TL2048-75	4' x 8'	80 lbs.	\$916

Trimline MLC: 1" Face Trim



Features:

- Economical white melamine surface
- Available with and without map rail
- Aluminum trim on three sides with small marker tray, 2 markers and 1 eraser cloth

No Map Rail

Number	Size (HxW)	Weight	Price
† TL2023-MLC	2' x 3'	10 lbs.	\$223
† TL2034-MLC	3' x 4'	18 lbs.	\$296
TL2044-MLC	4' x 4'	30 lbs.	\$413
TL2046-MLC	4' x 6'	40 lbs.	\$502
TL2048-MLC	4' x 8'	54 lbs.	\$660

With Map Rail

Number	Size (HxW)	Weight	Price
† TL2023R-MLC	2' x 3'	10 lbs.	\$243
† TL2034R-MLC	3' x 4'	18 lbs.	\$316
TL2044R-MLC	4' x 4'	30 lbs.	\$424
TL2046R-MLC	4' x 6'	40 lbs.	\$516
TL2048R-MLC	4' x 8'	54 lbs.	\$687

Merit Series: 3/8" Face Trim



Features:

- White porcelain enamel steel writing surface
- Satin anodize aluminum trim
- Z-bar clips

Number	Size (HxW)	Weight	Price
† MT2436	24" x 36"	16 lbs.	\$333
† MT3648	36" x 48"	32 lbs.	\$441

† Can Ship UPS Ground. All items on this page ship Freight Class 70.

Xchange Graphic Boards



Features:

- Glass markerboard features an interchangeable graphic insert that slides easily behind clear, low-iron tempered glass writing surface
- Exchange scene, season or message by sliding custom graphic in place
- Low profile aluminum trim top and bottom
- Built-in marker rail at top
- Standard black or white powder coat finish

Number followed by
B = black frame
W = white frame

Additional Xchange Graphic Insert

Number	Size (HxW)	Weight	Price
XC1824B / XC1824W	18" x 24"	20 lbs.	\$1,035
XC2436B / XC2436W	24" x 36"	39 lbs.	\$1,689
XC3648B / XC3648W	36" x 48"	78 lbs.	\$2,966

Number	Size (HxW)	Weight	Price
XCG1824	18" x 24"	1 lb.	\$679
XCG2436	24" x 36"	2 lbs.	\$1,129
XCG3648	36" x 48"	4 lbs.	\$2,042

NOTE: For Xchange Graphic Insert, submit high-resolution logos or graphic file. Images or logos should be submitted in high-resolution .jpeg, .pdf, .eps, or .ai format. If usable file is unavailable, ADD \$50 NET per hour - minimum one-hour charge - for creating graphics.

Envision Graphics: 3/8" Face Trim



Features:

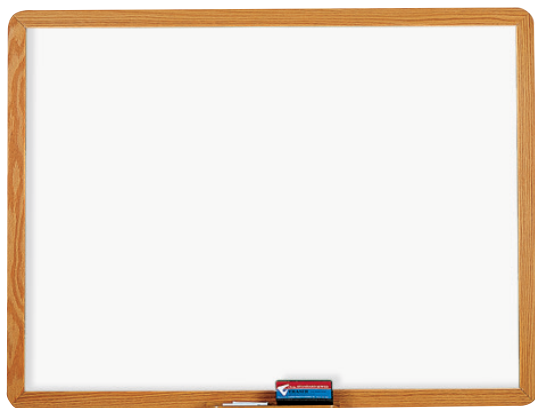
- Dry-erase markerboards with full-color, high resolution images
- Satin anodize aluminum frame
- Z-bar clips
- Will accept magnets

Number	Size (HxW)	Weight	Price
† EG1824M	18" x 24"	6 lbs.	\$356
† EG2023M	2' x 3'	12 lbs.	\$464
† EG2034M	3' x 4'	24 lbs.	\$728
EG2044M	4' x 4'	32 lbs.	\$750
EG2046M	4' x 6'	48 lbs.	\$1,077
EG2048M	4' x 8'	64 lbs.	\$1,380

NOTE: For Envision Graphic markerboards, submit high-resolution logos or graphic file. Images or logos should be submitted in high-resolution .jpeg, .pdf, .eps, or .ai format. If usable file is unavailable, ADD \$50 NET per hour - minimum one-hour charge - for creating graphics.

† Can Ship UPS Ground. All items on this page ship Freight Class 70.

2900: 1-3/4" Flat Face Trim, Radius Corners



Available in both markerboard and chalkboard

Features:

- Porcelain enamel steel writing surface; Natural or Medium Oak finish trim
- White LCS is furnished for markerboards if color not specified (see page 6 for colors). For 2900 Series chalkboards, use a "V" suffix in lieu of "L" and specify chalkboard color required. Example: 2948V No. 502 Gray.
- 12" pre-drilled marker tray
- Z-bar clips
- SCS Indoor Advantage Gold certified

Options:

- See page 38 for optional woods and finishes. If required, specify on order and ADD \$56.
- For custom match finish, add \$492.
- For optional Z-bar hangers for top of board and rubber bumpers for bottom of board, add \$10.80 per lineal foot.

Number	Size (HxW)	Weight	Price
† 2923L	2' x 3'	21 lbs.	\$420
† 2934L	3' x 4'	42 lbs.	\$561

WLCS Series: 1-3/4" Face Trim



Features:

- White porcelain enamel steel writing surface; Natural finish oak frame
- Z-bar clips
- 4 Assorted LCS Markers and one eraser cloth
- SCS Indoor Advantage Gold certified

Options:

- For Medium Oak finish, add \$19.58.
- See page 38 for additional woods and finishes. If required, specify on order and ADD \$108.

Number	Size (HxW)	Weight	Price
WLCS44	4' x 4'	56 lbs.	\$752
WLCS46	4' x 6'	84 lbs.	\$896
WLCS48	4' x 8'	112 lbs.	\$1,070
WLCS410	4' x 10'	140 lbs.	\$1,269

213 Series: 2" Angle Face Trim with Black Accent



Features:

- Tackable surface in Calyx Cork; see page 7 for color selections
- Specify finish – Natural or Medium Oak
- Full length Z-bar hanger at top

Options:

- See page 38 for wood finish options. If required, specify and ADD \$245.
- For Custom Match finish, specify and ADD \$492.

Size (HxW)	Weight *	Number	Calyx Cork Price
4' x 4'	48 lbs.	213	\$1,312
4' x 6'	72 lbs.	213A	\$1,501
4' x 8'	96 lbs.	213B	\$1,711
4' x 10'	120 lbs.	213C	\$2,055
4' x 12'	144 lbs.	213D	\$2,217

Specify tack surface material after model number CC for Calyx Cork.

† Can Ship UPS Ground. All items on this page ship Freight Class 70.

WLCS Series 700: 1-3/4" Face Trim



700 Series tackboards in Fabricork and Guilford of Maine FR701 Fabric are SCS Indoor Advantage Gold certified.

Guilford of Maine FR701 Fabric, Fabricork and Tan Nucork tackboards weigh approximately 1.25 lbs. per sq. ft.; Calyx Cork tackboards weigh 3 lbs. per sq.ft.

Features:

- Choose from tackable surface in Guilford of Maine FR701 Fabric, Fabricork, Calyx Cork, and Tan Nucork. See page 7 for color options.
- Natural Oak finish trim
- Z-bar clips at top

Options:

- For Medium Oak finish trim, specify and ADD \$20. Optional wood finishes shown on page 38. If required, specify and ADD \$95.
- For custom match finish add \$492.
- For optional round corners, add \$75.

Size (HxW)	Calyx Cork		Guilford Fabric		Fabricork		Tan Nucork	
	Number	Price	Number	Price	Number	Price	Number	Price
2' x 3'	† 750CC	\$298	† 750D	\$236	† 750F	\$217	† 750N	\$225
3' x 4'	† 751CC	\$475	† 751D	\$358	† 751F	\$317	† 751N	\$335
4' x 4'	757CC	\$91	757D	\$413	757F	\$362	757N	\$383
4' x 6'	759CC	\$805	759D	\$538	759F	\$461	759N	\$520
4' x 8'	760CC	\$1,016	760D	\$664	760F	\$558	760N	\$627

3300 Series: Edge-wrapped Tackboards for Furniture Applications

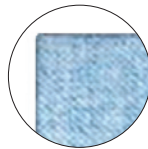


Features:

- Guilford of Maine FR701 Fabric or Fabricork tackboards are designed to fit almost any manufacturer's hutch, file cabinet, or bookcase
- Use as a tackable surface, for sound absorption, or simply to add color
- Tackable panels have square corners, fabric wrapped edges and are furnished with hook and loop hole hangers

Options:

- Adhesive is recommended for permanent installation
- Customer owned material for vertical surfaces can be used



Edge-wrapped Square Corners

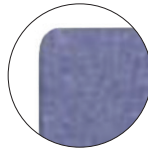
Number	Size (HxW)	Weight	Price
† 3327D	15" x 27"	6 lbs.	\$157
† 3333D	15" x 33"	8 lbs.	\$153
† 3345D	15" x 45"	10 lbs.	\$201
3357D	15" x 57"	13 lbs.	\$274
3367D	15" x 67"	15 lbs.	\$296
3369D	15" x 69"	18 lbs.	\$296

3400 Series: Fabric Wrapped Edges, Radius Corners



Features:

- Tackable surface in Guilford of Maine FR701 Fabric; specify color
- Fabric wrapped panels have 2" radius corners
- Eyelet hangers for easy installation



Edge-wrapped 2" Radius Corners



Eyelet hanger

Number	Size (HxW)	Weight	Price
† 3423D	2' x 3'	8 lbs.	\$164
† 3434D	3' x 4'	15 lbs.	\$231
3444D	4' x 4'	20 lbs.	\$321
3446D	4' x 6'	30 lbs.	\$430
3448D	4' x 8'	40 lbs.	\$518

† Can Ship UPS Ground. All items on this page ship Freight Class 70.

MARKER WALLS & TACK WALLS

Note: These products must be installed by qualified installers. Call Calyx for install price or referral.

Cover an entire wall, floor-to-ceiling. Calyx Marker Walls and Tack Walls are available in a wide range of design options, offering performance, style, and value to suit any situation. Panels butt together for a continuous surface.

Call Calyx customer service at 1-800-434-4610 for assistance with any custom options not covered in the catalog.

Marker Walls



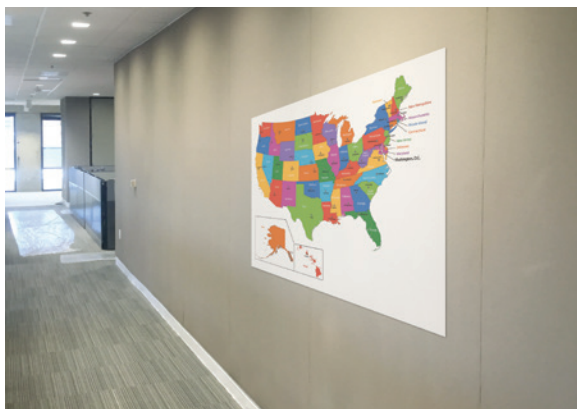
Features:

- Cover an entire wall, floor-to-ceiling, in heights up to 10'
- Ideal for offices, boardrooms, conference rooms, etc. – any where ideas are shared
- Panels butt together for a continuous writing surface
- Standard installation consists of LCS (Porcelain Enamel Steel Skin) matched butt joints and No. 18 adhesive. (Laminated panels recommended for use on uneven walls.)
- Individual panels available in heights up to 10' and lengths up to 3'11-1/2"
- See page 6 for color options

Number	Description	Price/Sq. Ft.
MW1	LCS Steel Skins with matched butt joints and No. 18 Adhesive	\$17.88
MW2	LCS panels mounted on 7/16" MDF with moisture barrier back and alum spline joints, 1 1/6" face trim	\$35
MW3	LCS panels mounted on 7/16" MDF with moisture barrier back and alum spline joints, 3/4" face trim	\$32

*Note: If installation to floor is not required, 264 marker tray can be used at bottom of marker walls. Ask about MW1 installations using 272F trim.
5" wide panels available, call for pricing*

Tack Walls



Features:

- Cover an entire wall or work space, floor-to-ceiling, in heights up to 10'
- Ideal for offices, boardrooms, conference rooms, etc. – view lengthy schedules and project planners at a glance
- Standard installation consists of Fabricork or Guilford of Maine FR701 Fabric with edges wrapped and No. 16A Adhesive.
- For a more finished look, order panels with fabric covered trim, fabric covered H-Bar joints, and fabric covered inside and outside corners
- Panels can be custom-made to fit existing walls
- Individual panels available in heights up to 10' and lengths up to 4'
- See page 7 for Fabricork and Fabric color options

Number	Description	Price/Sq. Ft.
TW1F	Edge-Wrapped Fabricork on duracore and 16A Adhesive	\$14.11
TW1D	Edge-wrapped Guilford Fabric on duracore and 16A Adhesive	\$17.36
TW2F	Fabricork on duracore panel, 1016FC fabric covered trim, fabric covered H-Bar and 16A Adhesive	\$24.06
TW2C	Calyx Cork on MDF, 1016 and H-Bar and 16A adhesive	\$34
TW2D	Guilford of Maine FR701 fabric on duracore panel, 1016FC fabric covered trim and H-Bar and 16A adhesive	\$30



Premiere Series Reversible Mobile Board



Features:

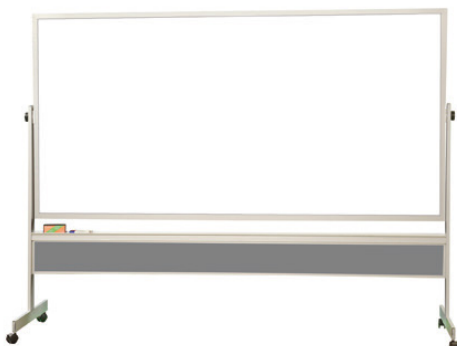
- Porcelain enamel steel dry-erase markerboard; or a combination with markerboard writing surface one side and Tan Nucork on the other side; also available with chalkboard
- Substantially constructed with either satin anodize aluminum frame or Natural Oak finish wood frame
- Panel revolves horizontally; metal locking device holds board at desired angle
- 2 locking and 2 non-locking 2" casters furnished
- Overall height is 74-1/2".

Options:

- Floor glides or 4 non-locking casters
- For Medium Oak, specify and ADD \$63. Optional wood finishes shown on page 38; if required, specify and ADD \$211.

Description	Size (HxW)	Weight	Aluminum	Price	Wood	Price
White LCS	4' x 6'	100 lbs.	LCS56	\$2,055		
both sides	3'6" x 5'	75 lbs.	LCS55	\$1,810		
	3' x 4'	50 lbs.	LCS155	\$1,462	LCS153	\$1,401
LCS 1 side	4' x 6'	100 lbs.	LCS69	\$1,702		
Tan Cork other	3'6" x 5'	75 lbs.	LCS67	\$1,614		
	3' x 4'	50 lbs.	LCS167	\$1,418	LCS158	\$1,304

Premiere Series 8-foot Reversible Mobile Board



Features:

- LCS both sides
- 4' high x 8' wide panel
- Call for more information

Number	Size (HxW)	Weight	Price
LCS248	4' x 8'	134 lbs.	\$2,975

All items on this page ship Freight Class 85.

Deluxe Two-sided Mobile Board



Features:

- White LCS markerboard
- Double-sided panel is mounted on heavy, rigid aluminum standards (panel does not revolve)
- Upright posts and cross pieces are 1-1/2" x 2" rectangular tubing; full length accessory tray is 2-1/2" wide. Overall height is 75-1/2".
- 2 locking and 2 non-locking 3" casters furnished; can be nested to conserve space

Description	Number	Size (HxW)	Weight	Price
White LCS	48LW	4' x 6'	135 lbs.	\$3,532
both sides	48-8LW	4' x 8'	180 lbs.	\$4,135

Deluxe Series Revolving Two-sided Mobile Board

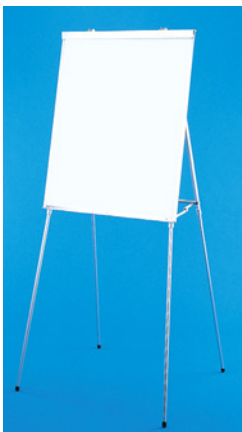


Features:

- Porcelain writing surface in LCS markerboard
- Panel is mounted on heavy, rigid aluminum standards and revolves on 2 pins in a horizontal plane.
- Upright posts and cross pieces are 1-1/2" x 2" rectangular tubing; full length accessory tray is 2-1/2" wide. Overall height is 75-1/2".
- Moves easily on carpet casters and can be stacked to conserve space
- Available with markerboard or chalkboard one side with Tan Cork on the opposite side

Description	Number	Size (HxW)	Weight	Price
White LCS	146BL	4' x 5'	192 lbs.	\$3,328
both sides	146CL	4' x 6'	214 lbs.	\$3,617
	146EL	4' x 8'	272 lbs.	\$4,214

MLC405 Presentation Easel



Features:

- Lightweight aluminum easel with white MLC Melamine markerboard
- Telescoping legs with 3 height adjustments – from 36" for table top use – to 72"
- Spring-loaded chart clamp holds paper pads for flipchart use
- 4 Assorted LCS markers and 1 microfiber eraser cloth

Options:

- Easel Pads 27" x 34", punched 17-1/2" on center – 50 sheets per pad – 4 pads per carton. If required, specify ESP27x34 ADD and add \$160.

Number	Size (HxW)	Weight	Price
† MLC405	35" x 28"	12 lbs.	\$642

† Can Ship UPS Ground. All items on this page ship Freight Class 85.

SLIDING UNITS

Custom built Horizontal Sliding Units – offer ideal visual communication solutions when large visual display surfaces are required but space is limited. Sliding units provide optimum display surfaces within easy reach of the instructor/moderator for teaching, conferences, and training. Constructed with panels that slide from side to side doubling, tripling, or even quadrupling available space. Select from a variety of display surfaces for sliding panels and back panels.

Horizontal Sliding Units



Optional Panels – In lieu of LCS

Porcelain Chalkboard	Add \$2.52 per sq. ft.
Calyx Cork, Fabricork, Guilford of Maine FR701 Fabric	Add \$4.28 per sq. ft.
Glass Beaded Projection Screen (Maximum without seam – 60")	Add \$10.68 per sq. ft.
Units with no back panels	Deduct \$11.33 per sq. ft.
Tan Nucork	Deduct \$4.66 per sq. ft.

Optional Frame Finishes – in lieu of satin anodize

Medium or Dark Bronze Anodize	
2-Track Unit	ADD \$2,267
3- or 4-Track Unit	ADD \$2,729
Powder Coat Finish	
2-Track Unit	ADD \$1,102
3- or 4-Track Unit	ADD \$1,693

Features:

- Porcelain enamel steel markerboard sliding panels and back panel; satin anodize finish aluminum frame and housing
- Top-suspended sliding panels glide easily over aluminum track on nylon rollers
- Standard installations consist of sliding panels and fixed back panel (2 track units up to 12' have 2 sliding panels; 14' has 3; and 16' to 24' units have 4)
- 3 and 4-track units have 1 sliding panel per track. Panels cover approximately one-half of the unit
- 2-track units weigh approximately 6-1/2 lbs. per sq. ft., 4-track units weigh approximately 11-1/2 lbs. per sq. ft.

Option:

- For extra sliding panels, add \$468 for each additional LCS panel required. If other type of panel is required, add \$468 PLUS the adds shown at left.

Note: These prices do not apply to extra panels ordered separately – only when furnished with the original order. When extra panels are required at a later date, contact customer service for price.

Size (HxW)	Number	2-Track	Number	3-Track	Number	4-Track
4' x 6'	HS46-2	\$3,898	HS46-3	\$5,599	HS46-4	\$6,238
4' x 8'	HS48-2	\$4,574	HS48-3	\$6,458	HS48-4	\$7,262
4' x 10'	HS410-2	\$5,389	HS410-3	\$7,650	HS410-4	\$8,650
4' x 12'	HS412-2	\$6,088	HS412-3	\$8,604	HS412-4	\$9,723
4' x 14'	HS414-2	\$7,413	HS414-3	\$10,710	HS414-4	\$12,152
4' x 16'	HS416-2	\$8,123	HS416-3	\$11,171	HS416-4	\$12,368
4' x 20'	HS420-2	\$9,944	HS420-3	\$13,436	HS420-4	\$15,183
4' x 24'	HS424-2	\$11,230	HS424-3	\$15,232	HS424-4	\$17,099

All items on this page ship Freight Class 70.

GLASS DOOR CABINETS

Note: A \$450 NET minimum charge applies on all orders for color anodized trim.

Provide an avenue for information, directions, announcements, or a display for photos or artwork, wherever it is needed with glass enclosed, wall-hung bulletin cabinets. Select a tackable back panel in a coordinating or complementary color for posting bulletins. Available in wood and aluminum frames.



Imperial Series: Bulletin Board



Features:

- Constructed of heavy-gauge satin anodize aluminum
- Tackable back panels in Calyx Cork, Fabricork, or Guilford of Maine FR701 fabric. See page 7 for color selections.
- 2 sliding 3/16" tempered glass doors with finger pulls and flat key tumbler lock
- Bulletin Board Cabinets are 3-1/4" overall; inside depth is 1-1/2"
- Z-bar hangers

Option:

- For Medium or Dark Bronze Anodize in lieu of Satin, specify Imperial BA ADD and add \$1,441.
- For powder coat finish in lieu of Satin, specify Imperial PC ADD and add \$289.
- For Lights, specify Imperial Light ADD and add \$695.

Size (HxW)	Weight	Bulletin Board	Price
36" x 48"	80 lbs.	294	\$2,265
36" x 60"	100 lbs.	295	\$2,624
36" x 72"	120 lbs.	296	\$2,807
48" x 60"	135 lbs.	297	\$2,791
48" x 72"	160 lbs.	298	\$3,023

Universal: Bulletin Board



Features:

- Tackable back panels in Calyx Cork, Fabricork, or Guilford of Maine FR701 Fabric. See page 7 for for color selections.
- Frames and all structural members are satin anodize aluminum; overall cabinet depth is 3"; inside depth 1-15/16"
- Three 3/16" tempered glass doors with piano hinges and flat key tumbler locks
- Z-bar hangers

Options:

- For Medium or Dark Bronze Anodize in lieu of Satin, specify Universal BA ADD and add \$1,441.
- For powder coat finish in lieu of Satin, specify Universal PC ADD and add \$427.
- For Light, specify Light ADD and add \$390 PER DOOR.

Size (HxW)	Weight	Bulletin Board Back Panel	Price
36" x 72"	159 lbs.	1846	\$3,243
48" x 72"	177 lbs.	1847	\$3,513

All items on this page ship Freight Class 100.

Contemporary Series: Bulletin Board Cabinet



Features:

- Perimeter trim is 1-1/2" x 3" heavy-gauge rectangular aluminum with satin anodize finish; inside depth is 1-3/4"
- Tackable back panels can be Calyx Cork, Fabricork, Guilford of Maine FR701 Fabric, or Hook-Fab; see page 7 for color selections.
- 3/16" tempered sliding glass doors have ground-in finger pulls; hinged doors are hung on piano hinges. Both have flat key tumbler locks
- Cabinets with header have 6" translucent Plexiglas header panel; specify name
- Z-bar hangers for surface mounting
- Dimensions are overall, including trim

Options:

- For lights, specify Light ADD and add \$390 PER DOOR.
- For Medium or Dark Bronze Anodize finish in lieu of Satin, specify Contemporary BA ADD and add \$1,441.
- For powder coat finish in lieu of Satin, specify Contemporary PC ADD and add \$527.
- Cabinets with 4" housing in lieu of 3" – call for pricing
- Weatherproofing on hinged door cabinets – call for pricing
- Intermediate sizes available
- For Heights over 4' (4'6" maximum recommended), specify Contemporary Extra Height ADD and add \$258.

Note: Recessed installation is optional. If required, provide finished opening measurements into which the unit will be placed. Cabinet will be made 1/2" smaller in each direction for easy fit.

*Sliding door units with more than 2 doors will have mullion(s).

**Note: 3' x 2' cabinet has one door; 3' x 4' through 4' x 6' have 2 pair of doors; and 4' x 8' has 3 pair of doors.

Size (HxW)	Weight	No. Doors **	Hinged Door		Sliding Door *		Hinged w/Header		Sliding w/Header *	
3' x 2'	42 lbs.	1	2035	\$1,232	2035S	\$2,014	3035H	\$1,826	3035S	\$2,422
3' x 2'6"	45 lbs.	1	2036	\$1,454	2036S	\$2,244	3036H	\$2,044	3036S	\$2,608
3' x 3'	54 lbs.	1	2037	\$1,515	2037S	\$2,286	3037H	\$2,113	3037S	\$2,754
3'6" x 2'6"	53 lbs.	1	2038	\$1,511	2038S	\$2,290	3038H	\$2,076	3038S	\$2,708
3'6" x 3'	63 lbs.	1	2039	\$1,591	2039S	\$2,375	3039H	\$2,210	3039S	\$2,800
4' x 4'	96 lbs.	2 pair	2040	\$2,484	2040S	\$2,852	3040H	\$2,924	3040S	\$3,215
3' x 4'	72 lbs.	2 pair	2041	\$2,255	2041S	\$2,462	3041H	\$2,676	3041S	\$2,918
3'6" x 5'	105 lbs.	2 pair	2042	\$2,725	2042S	\$2,961	3042H	\$3,150	3042S	\$3,463
4' x 5'	120 lbs.	2 pair	2043	\$2,812	2043S	\$3,101	3043H	\$3,237	3043S	\$3,555
4' x 6'	144 lbs.	2 pair	2044	\$3,048	2044S	\$3,303	3044H	\$3,629	3044S	\$3,848
4' x 8'	256 lbs.	3 pair	2046	\$4,810	2046S	\$5,124	3046H	\$5,935	3046S	\$5,694

Classic Series: Bulletin Board Cabinet



Features:

- Radius edge cabinet is constructed of 1-1/2" x 3" hollow tube perimeter trim with satin anodize finish; inside depth is 1-3/4"
- Tackable back panels can be Calyx Cork, Fabricork, or Guilford of Maine FR701 Fabric. See page 7 for color selections.
- 3/16" tempered glass doors have continuous hinges and flat key tumbler locks
- Z-bar hangers

Options:

- For lights, specify Light ADD and add \$390 PER DOOR.
- For Medium or Dark Bronze Anodize finish in lieu of Satin, specify Classic BA ADD and add \$1441.
- For powder coat finish in lieu of Satin, specify Classic PC ADD and add \$466.

Number	No. Doors	Size (HxW)	Weight	Price
1023	2	3' x 4'	86 lbs.	\$2,274
1024	2	4' x 4'	116 lbs.	\$2,462
1025	2	4' x 5'	148 lbs.	\$2,789
1026	2	4' x 6'	178 lbs.	\$3,023
1028	4	4' x 8'	232 lbs.	\$4,899

All items on this page ship Freight Class 100.

Revere Series: Bulletin Board Cabinet



Note: For Fabricork, Guilford of Maine FR701 Fabric, or Hook-Fab, specify material and color and use Calyx Cork price.

Recessed installation is optional – provide exact (finished) opening measurements into which the unit will be placed. Cabinets made 1/2" smaller in each direction for easy fit.

Features:

- Tackable back panels in Tan Nucork, Calyx Cork, Fabricork, Guilford of Maine FR701 Fabric, or Hook-Fab. See page 7 for color selections.
- Constructed with 1" x 3" hollow tube perimeter in satin anodize finish
- Cabinets have hinged door(s) with 3/16" tempered glass, continuous piano-type hinges and flat key tumbler locks
- Dimensions given are overall, including trim and housing; inside depth is 1-3/4"
- Z-bar hangers

Options:

- For lights, specify Light ADD and add \$365 PER DOOR.
- For Medium or Dark Bronze Anodize finish in lieu of Satin, specify Revere BA ADD and add \$1,441.
- For powder coat finish in lieu of Satin, specify Revere PC ADD and add \$496.
- For round corner design in lieu of square corners, specify Revere RC ADD and add \$113.
- Intermediate sizes available
- For heights over 4' (4'6" maximum recommended), specify Revere Extra Height ADD and add \$248.

Size (HxW)	Weight	No. Doors	Calyx Cork	Price	Tan Nucork	Price
3' x 3'	50 lbs.	1	3820BCC	\$1,557	3820BN	\$1,432
3'6" x 3'	58 lbs.	1	3920BCC	\$1,619	3920BN	\$1,496
3' x 4'	66 lbs.	2	4120BCC	\$2,070	4120BN	\$1,947
4' x 4'	88 lbs.	2	4020BCC	\$2,371	4020BN	\$2,209
3'6" x 5'	96 lbs.	2	4220BCC	\$2,569	4220BN	\$2,363
4' x 6'	144 lbs.	2	4420BCC	\$2,880	4420BN	\$2,632

Deluxe Series: Bulletin Board Cabinet



Features:

- Tan Nucork back panel
- Satin anodize aluminum frame; overall depth 2"; inside depth 3/4"
- 3/16" hinged tempered glass doors with locks
- Z-bar hangers

Options:

- For Medium or Dark Bronze Anodize finish in lieu of Satin, specify Deluxe BA ADD and add \$1,441.
- For powder coat finish in lieu of Satin, specify Deluxe PC ADD and add \$251.

Number	No.Doors	Size (HxW)	Weight	Price
1941	2	36" x 48"	66 lbs.	\$1,958

Note: Finished unit is 1/8" larger in height and width than size shown.

All items on this page ship Freight Class 100.

Large Contemporary Series: Bulletin Board Cabinet



Features:

- Heavy-gauge rectangular aluminum housing with satin anodize finish in 1-1/2" x 3" or 1-3/4" x 4"; inside depth of 3" cabinet is 1-3/4"; inside depth of 4" cabinet is 2-3/4"
- Mitered corners are reinforced for rigidity
- Tackable back panels in Calyx Cork, Fabricork, Guilford of Maine FR701 Fabric, or Hook-Fab. See page 7 for color selections.
- Locking tempered glass doors are hung on piano hinges
- Continuous angle hangers furnished for top and bottom
- Surface or recess installed (When ordering for recess installation, provide exact (finished) opening measurements into which the unit will be placed. Cabinet will be made 1/2" smaller in each direction for easy fit.)

Options:

- For lights, specify Light ADD and add \$364 PER DOOR. Light not available in 3" cabinets
- For Medium or Dark Bronze Anodized finish in lieu of Satin, specify Large Contemporary BA ADD and add \$1,921.
- For powder coat finish in lieu of Satin, specify Large Contemporary PC ADD and add \$835.

Size (HxW)	Weight	No. Doors	3" Housing	Price	4" Housing	Price
5' x 3'	180 lbs.	1	2153-3	\$3,098	2153-4	\$4,312
5' x 6'	300 lbs.	2 pair	2156-3	\$5,540	2156-4	\$6,158
6' x 4'	250 lbs.	1	2164-3	\$3,604	2164-4	\$4,998
6' x 8'	500 lbs.	2 pair	2168-3	\$6,714	2168-4	\$7,493

Rival: Bulletin Board Cabinet



Shown with optional bronze anodize finish

Features:

- Tan Nucork tackable back panel
- Cabinet has satin anodize finish aluminum frame; outside depth is 1-15/16"; inside depth 3/4"
- 3/16" tempered glass door with piano-type hinge and flat key tumbler lock
- Z-bar hangers

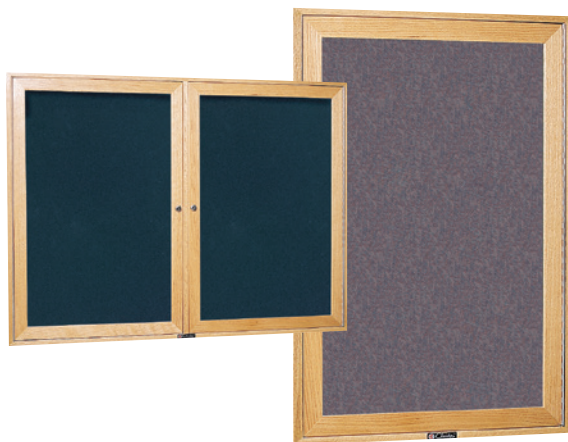
Options:

- For Medium or Dark Bronze Anodize finish in lieu of Satin, specify Rival BA ADD and add \$961.
- For powder coat finish in lieu of Satin, specify Rival PC ADD and add \$167.

Number	Size (HxW)	Weight	Price
367	42" x 30"	60 lbs.	\$1,290

All items on this page ship Freight Class 100.

Wood Frame Bulletin Board



Features:

- Tackable bulletin board back panel in Calyx Cork, Fabricork, Guilford of Maine FR701 Fabric, or Hook-Fab. See page 7 for color selection.
- Mitered corner construction in Natural or Medium Oak finish. Specify finish.
- 2" deep outside; 3/4" inside
- 3/16" tempered hinged glass door with flat key tumbler locks
- Z-bar hangers

Options:

- See page 38 for optional woods and finishes. If required, specify and ADD \$212.

Size (HxW)	Weight	No. Doors	Bulletin Board	
36" x 48"	55 lbs.	2	3080	\$2,586
48" x 48"	75 lbs.	2	3080A	\$2,825
42" x 60"	85 lbs.	2	3080B	\$3,023
48" x 60"	90 lbs.	2	3080C	\$3,038
48" x 72"	110 lbs.	3	3080D	\$3,919

310 Bulletin Board



Note: Overall height is approximately 3/16" larger than shown.

Features:

- Tackable bulletin board back panels in Calyx Cork, Fabricork, Guilford of Maine FR701 Fabric, or Hook-Fab. See page 7 for color selection.
- Constructed of Natural or Medium Oak finish, cabinet has mitered corners; 3-1/4" deep outside; 1-1/4" inside
- Two 3/16" tempered sliding glass doors with heavy-duty locks
- Sliding glass door shoe, channel, and track are extruded aluminum with bronze finish
- Z-bar hangers

Options:

- See page 38 for optional woods and finishes. If required, specify and ADD \$71.
- For optional Lights, specify 310 Light ADD and add \$695.

Size (HxW)	Weight	No. Doors	Bulletin Board	
36" x 48"	82 lbs.	2	310	\$2,209
36" x 60"	102 lbs.	2	310A	\$2,621
36" x 72"	122 lbs.	2	310B	\$2,782
48" x 60"	134 lbs.	2	310C	\$2,768
48" x 72"	162 lbs.	2	310D	\$2,958

EPH Header Panel



Features:

- Optional 6" Plexiglas header panel available on most hinged door cabinets
- Includes six letters per foot; sold in 6" increments.

Note: A separate header panel is furnished above each door on cabinets with more than 1 opening.

Number	Price per linear ft.
EPH	\$58

DISPLAY AND TROPHY CASES

Showcase awards. Display collections. Exhibit manufactured goods. Display and trophy cases can be designed to custom-fit your space and display needs. Extensive collection of display cases is available in a wide range of styles, materials, and finishes. Select from freestanding, wall mounted, and recessed case designs in wood or aluminum.



Premiere Freestanding Display Case



Features:

- Constructed in one continuous piece, Premiere cases do not require wall support
- Tackable back panels in Calyx Cork, Fabricork, Guilford of Maine FR701 Fabric, Hook-Fab, and Tan Nucork. See page 7 for color selections. Back panels also available in Walnut or Oak grain high-pressure laminate.
- Frame is heavy-gauge satin anodized aluminum; inside depth is 13-3/4"
- Oak or Walnut grain high-pressure laminate base and aluminum legs are 18" high
- 3/16" tempered glass sliding doors with locks and keys, and three 6", 8", 10", or 12" wide adjustable glass shelves
- Floor leveling glides included

Options:

- Intermediate sizes available
- For optional Lights, specify Light ADD and add \$389 per pair of doors.
- For Medium or Dark Bronze anodized in lieu of satin anodize, specify Premiere Free BA ADD and add \$3,844.
- For powder coat finish in lieu of satin anodize, specify Premiere Free PC ADD and add \$1,237.

Note: Specify shelf width, frame finish, and type and color of back panel.

Size (HxWxD)	Weight	No. of Doors	Aluminum Legs Number	Aluminum Legs Price	Wood Base Number	Wood Base Price
5'6" x 4' x 14"	320 lbs.	1 pair	456	\$6,654	470	\$7,311
5'6" x 5' x 14"	400 lbs.	1 pair	457	\$7,195	471	\$7,857
5'6" x 6' x 14"	480 lbs.	1 pair	458	\$7,681	472	\$8,375
5'6" x 8' x 14"	640 lbs.	2 pairs	463	\$11,450	474	\$12,032
5'6" x 10' x 14"	800 lbs.	2 pairs	465	\$12,684	475	\$13,338
5'6" x 12' x 14"	960 lbs.	3 pairs	467	\$16,118	476	\$16,431
5'6" x 16' x 14"	1280 lbs.	3 pairs	469	\$18,822	478	\$19,193

All items on this page ship Freight Class 125.

742 Freestanding Display Case



Features:

- Hardwood frame with Natural Oak finish; base is 12" deep
- 3/16" tempered glass sliding glass doors with flat key tumbler locks
- Three 10" adjustable shelves

Options:

- For optional woods and finishes, see page 38.
- If required, specify and ADD \$143.

	Number	Size (HxWxD)	Weight	Price
Glass Back Panel	742	42" x 36" x 12"	135 lbs.	\$4,764
Mirror Back Panel	742A	42" x 36" x 12"	135 lbs.	\$4,901

Classic Series Display Case



Features:

- Solid wood construction
- Case has an inside depth of 15-3/4"
- Cases have 3/16" tempered glass doors with flat key tumbler locks
- 3 adjustable glass shelves
- Back panel available in Calyx Cork, Fabricork, or Guilford of Maine FR701 Fabric; see page 7 for color selections.

Options:

- Laminate back panel in your choice of standard Wilsonart laminates
- For optional light, specify 650 LIGHT ADD and add \$556.

Finish	Size (HxWxD)	Weight	Hinged Door Number	Price	Sliding Door Number	Price
Natural Oak	72" x 48" x 18"	400 lbs.	650N	\$11,528	651N	\$11,361
Medium Oak	72" x 48" x 18"	400 lbs.	650M	\$11,528	651M	\$11,032
Mahogany	72" x 48" x 18"	400 lbs.	650MS	\$11,677	651MS	\$11,458
Maple	72" x 48" x 18"	400 lbs.	650MA	\$12,401	651MA	\$11,545
Cherry	72" x 48" x 18"	400 lbs.	650CH	\$12,217	651CH	\$11,884

748 Universal Series Display Case



Features:

- Case is 6'6" high and 48" wide with an outside depth of 18" and an inside depth of 15-3/4"; glass back panel
- Extruded aluminum frame; 302P Black powder coat finish
- Lighting at top accentuates exhibits
- 3/16" tempered glass back panel, end panels, and sliding doors with flat key tumbler lock
- 3 adjustable shelves with brackets and standards
- Black laminate base is 18" high and features storage space with sliding doors and lock

Options:

- For other standard powder coat colors, see page 38
- Other standard Wilsonart laminate colors available

	Number	Size (HxWxD)	Weight	Price
Illuminated	748	78" x 48" x 18"	400 lbs.	\$9,710
No Light	748A	78" x 48" x 18"	400 lbs.	\$9,007

All items on this page ship Freight Class 125.

Premiere Wall Mounted Display Case



Features:

- Constructed of heavy-gauge satin anodize aluminum
- Inside depth is 13-3/4"
- Tackable back panels in Calyx Cork, Fabricork, Guilford of Maine FR701 Fabric, Hook-Fab, and Tan Nucork. See page 7 for color selections. Back panels also available in Walnut or Oak grain high-pressure laminate.
- 3/16" tempered glass sliding doors with locks and keys, and three 6", 8", 10", or 12" wide adjustable glass shelves
- Continuous angle hangers

Options:

- Intermediate sizes available
- For optional Lights, specify Light ADD and add \$389 per pair of doors.
- For Medium or Dark Bronze anodized finish in lieu of satin anodize, specify Premiere Wall BA ADD and add \$3,762.
- For powder coat finish in lieu of satin anodize, specify Premiere Wall PC ADD and add \$1,178.

Note: Specify shelf width, frame finish, and type and color of back panel.

Number	Size (HxWxD)	Weight	Doors	Price
479	4' x 3' x 14"	216 lbs.	1 pair	\$6,084
481	4' x 4' x 14"	288 lbs.	1 pair	\$6,678
482	4' x 5' x 14"	360 lbs.	1 pair	\$7,233
483	4' x 6' x 14"	432 lbs.	1 pair	\$7,882
484	4' x 8' x 14"	640 lbs.	2 pair	\$11,220
485	4' x 10' x 14"	800 lbs.	2 pair	\$12,492
486	4' x 12' x 14"	960 lbs.	3 pair	\$15,531
488	4' x 16' x 14"	1280 lbs.	3 pair	\$17,833

309 Sliding Door Display Case



Features:

- Constructed with Natural or Medium Oak finish
- Tackable back panels in Calyx Cork, Fabricork, Guilford of Maine FR701 Fabric, or Hook-Fab. See page 7 for color selections.
- Inside depth of 10-3/4" case is 8-7/8"; inside depth of 7" case is 5-1/8"
- 3/16" tempered glass sliding doors with finger pulls and flat key tumbler lock; adjustable glass shelves
- Sliding glass door shoe, channel, and track are extruded aluminum with bronze finish
- Z-bar hangers

Options:

- For optional Lights, specify Light ADD and add \$389.
- See page 46 for optional woods and finishes. If required, specify ADD and add \$187.

Case Number	Size (HxWxD)	No. of Shelves	Shelf Width	Weight	Price
309	3' x 4' x 7"	2	4"	200 lbs.	\$3,645
309A	4' x 5' x 7"	3	4"	260 lbs.	\$4,582
309B	4' x 6' x 7"	3	4"	300 lbs.	\$4,907
309C	4' x 5' x 10-3/4'	3	8"	320 lbs.	\$5,463
309D	4' x 6' x 10-3/4'	3	8"	340 lbs.	\$5,872

All items on this page ship Freight Class 125.

370 Series Recessed Display Case



Note: Always specify type and color of back panel; width of glass shelves and whether wood box and/or light are required. Lights, when required, are installed but wiring is not included.

Features:

- Display case fronts are built of satin anodize aluminum
- Tackable back panels in Calyx cork, Fabricork, Guilford of Maine FR701 Fabric, and Hook-Fab, or Oak or Walnut grain high-pressure laminate. See page 7 for color selection.
- 3/16" tempered glass sliding doors with lock and key
- Three 6", 8", 10", or 12" wide glass shelves with standards and brackets

Options:

- Wood box (specify depth) up to 24" (16" furnished if depth not specified) and finish - Oak or Walnut Wilsonart laminate
- For optional Lights, specify Light ADD and add \$389 per PAIR of doors.
- For Medium or Dark Bronze anodized finish in lieu of satin anodize, specify Trophy Case BA ADD and add \$2,401.
- For powder coat finish in lieu of satin anodize, specify Trophy Case PC ADD and add \$781.

Case Number	Size (HxW)	Masonry Opening	Pairs of Doors	Weight	Price	Optional Wood Box Number	Weight	Price
372	4' x 4'	44-5/16" x 44-5/16"	1	192 lbs.	\$3,878	372WB	80 lbs.	\$1,501
373	4' x 6'	44-5/16" x 68-5/16"	1	288 lbs.	\$4,616	373WB	120 lbs.	\$1,586
374	4' x 8'	44-5/16" x 92-5/16"	2	384 lbs.	\$6,862	374WB	160 lbs.	\$1,682
375	4' x 10'	44-5/16" x 116-5/16"	2	480 lbs.	\$7,642	375WB	200 lbs.	\$1,773
376	4' x 12'	44-5/16" x 140-5/16"	3	576 lbs.	\$10,002	376WB	240 lbs.	\$2,569
378	4' x 16'	44-5/16" x 188-5/16"	3	768 lbs.	\$11,761	378WB	320 lbs.	\$2,757

390 Large Door Recessed Display Case



Note: Always specify type and color of back panel; width of glass shelves and whether wood box and/or light are required. Lights, when required, are installed but wiring is not included.

Features:

- Super-heavy satin anodized aluminum frame; 4" face; corners mitered for rigidity
- Tackable back panels in Calyx Cork, Fabricork, Guilford of Maine FR701 Fabric, and Hook-Fab. See page 7 for color selection.
- 1/4" tempered glass sliding doors with lock and key - similar to patio doors
- Three 6-, 8-, 10-, or 12-inch wide glass shelves with standards and brackets
- Dimensions given are overall, including trim
- Standard sizes are shown; cases can be constructed in virtually any size required

Options:

- For Medium or Dark Bronze anodized finish in lieu of satin anodize, specify Large Door BA ADD and add \$3,362.
- For powder coat finish in lieu of satin anodize, specify Large Door PC ADD and add \$1,204.
- Wood box (specify depth) up to 24", is 1/2" thick Oak or Walnut Wilsonart laminate

Case Number	Size (HxW)	Doors	Weight	Price	Optional Wood Box Number	Weight	Price	Optional Light Number	Price
394	6' x 6'	2	360 lbs.	\$6,871	394WB	180 lbs.	\$2,130	394FL	\$937
395	6' x 8'	2	480 lbs.	\$8,660	395WB	240 lbs.	\$2,251	395FL	\$1,326
396	6' x 10'	3	600 lbs.	\$11,635	396WB	300 lbs.	\$2,842	396FL	\$1,524
397	6' x 12'	4	720 lbs.	\$13,401	397WB	360 lbs.	\$3,556	397FL	\$1,985
398	6' x 14'	4	840 lbs.	\$16,190	398WB	420 lbs.	\$3,725	398FL	\$2,178
399	6' x 16'	4	960 lbs.	\$16,936	399WB	480 lbs.	\$3,894	399FL	\$2,425

All items on this page ship Freight Class 125.

CONFERENCE ROOM TOOLS

Lecture units are the ideal communication tools for meetings and presentations. Lecture units feature LCS low-gloss porcelain enamel steel for writing and projection, and combine markerboards and tackboards to create an integrated presentation center. Optional companion storage credenza keeps resources close at hand. All surfaces and cabinetry are available in a variety of materials and finishes to complement any room environment.

Contemporary Style Wood Lecture Unit



Options	Specify Order As	Size (HxW)	Price
Matte White Pull-down Projection Screen	40" Screen add	40" x 40"	\$250
	60" Screen add	40" x 60"	\$269
Optional Light*	Light add		\$405
Optional Lock and Key	Lecture Lock add	4' & 6' units	\$112
Deduct for no finish	Unfinish Lecture 2'	2' units	\$102
	Unfinish Lecture 4'	4' units	\$177
	Unfinish Lecture 6'	6' units	\$213
Extra Sketching Pads (4 pads per carton)	ESP20x34	20" x 34"	\$160
LCS inside doors	Lecture LCS 2' add	2' Size	\$35
In lieu of bulletin board	Lecture LCS 4' add	4' Size	\$93
	Lecture LCS 6' add	6' Size	\$139

* Note: Light and screen not available in same unit.

Features:

- Contemporary cabinets feature radius corners (square corners optional)
- Low gloss porcelain enamel steel writing surface
- Furnished with 1 white sketching pad, 4 assorted LCS markers, and 1 microfiber eraser cloth
- Concealed Z-bar hangers for easy and secure installation

Options:

- See page 7 for other materials and colors for inside of door(s)
- Matching credenza. Call for price.

Finish	(HxW)	No. of Doors	Weight	Number	Price
Walnut	4' x 4'	2	110 lbs.	508-4WN	\$4,245
Walnut	4' x 6'	2	160 lbs.	508-6WN	\$5,184
Natural Oak	4' x 4'	2	110 lbs.	509-4N	\$4,086
Medium Oak	4' x 4'	2	110 lbs.	509-4M	\$4,086
Natural Oak	4' x 6'	2	160 lbs.	509-6N	\$4,948
Medium Oak	4' x 6'	2	160 lbs.	509-6M	\$4,948
Mahogany	4' x 4'	2	110 lbs.	512-4MS	\$4,066
Mahogany	4' x 6'	2	160 lbs.	512-6MS	\$4,926
Maple	4' x 4'	2	110 lbs.	516-4MA	\$4,297
Maple	4' x 6'	2	160 lbs.	516-6MA	\$5,249
Cherry	4' x 4'	2	110 lbs.	517-4CH	\$4,181
Cherry	4' x 6'	2	160 lbs.	517-6CH	\$5,072

Contemporary Style Laminate Lecture Unit



Features:

- Laminate lecture units have square self-edge profile and square corners
- Laminate finish is exceptionally durable and has excellent scratch resistance
- Select from standard Wilsonart laminate colors
- Lecture unit features Low Gloss porcelain enamel steel writing surface
- Tan Nucork tackboards inside doors have display rail with cork insert and spring clip hooks for tacking or hanging charts
- Furnished with 1 white sketching pad, 4 assorted LCS markers, and 1 microfiber eraser cloth
- Concealed Z-bar hangers for easy and secure installation

Number	Finish	Size (HxW)	Weight	Price
518-4PL	Laminate	4' x 4'	110 lbs.	\$4,538
518-6PL	Laminate	4' x 6'	160 lbs.	\$5,557

All items on this page ship Freight Class 125.

344 Wave Lectern



344 Lectern shown with optional milled logo

Features:

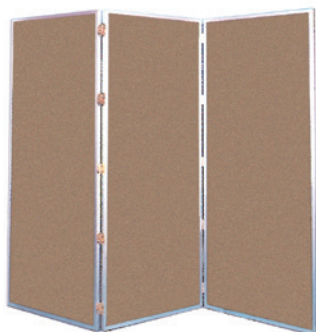
- Inspired design features curved solid wood sides with a wavy laminate front panel
- Lectern height is approx. 44"; width, 21"; depth, 18"
- Sloped reading surface is 16-1/2" x 21"; storage shelves
- Glides furnished

Option: For precision milled graphic or logo on lectern front, call for pricing.

Number	Finish	Weight	Price
344	Black Hardwood/Cherry Laminate	76 lbs.	\$2,167

Freight Class 175

725 Folding Screen



Features:

- Screens are lightweight, yet durable; an economical, effortless way of providing privacy
- Tan Nucork panels have aluminum frame with double action hinges
- Nucork panels can be used as they are, painted, or papered by owner
- Fold nearly flat for storage

Number	Frame Finish	No. of Panels	Size (HxW)	Weight	Price
725	Satin Anodize	3	60" x 72"	55 lbs.	\$1,228
725A	Satin Anodize	3	68" x 72"	60 lbs.	\$1,323
725B	Satin Anodize	3	80" x 72"	70 lbs.	\$1,501
725C	Satin Anodize	4	60" x 96"	74 lbs.	\$1,540

Freight Class 70

MAP & DISPLAY RAILS

Utilize Map and Display Rails installed on boards or directly to wall to add exhibit space. Ideal for displaying artwork, photos, posters and more. Select from a wide range of design options, finishes and insert choices.

79 Hang-Tight Rail System



Features:

- Combines standard aluminum map and display rail with a specially designed extrusion that holds posters, pamphlets, blueprints, etc., securely in place without tacking
- For easy removal, simply pull up and out
- Tackable insert is approx. 1-5/8" wide, available in your choice of materials and colors. See page 7 for options
- Rail and gripping mechanism are made of heavy gauge aluminum
- HT79 weighs approximately 1 lb. per lin. ft.

Number	Length	Price
HT79-2	2'0"	\$110
HT79-4	4'0"	\$153
HT79-6	6'0"	\$211
HT79-8	8'0"	\$252

EDR Exhibit Rail



Features:

- EDR offers an attractive and economical way of adding exhibit space
- Rail is 3" wide and features a Fabricork tackable insert
- Mounts with 3/4" flat head screws (furnished) or with your double-sided tape
- EDR Rail weighs approximately 1/2 lb. per lin. ft.

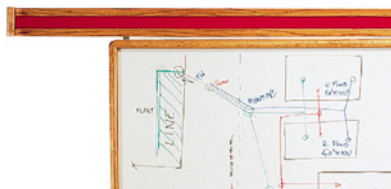
Options:

See page 7 for insert colors available.

Number	Price	Length	Number*	Price
EDR3	\$96	3'	EDR3-6	\$504
EDR4	\$120	4'	EDR4-6	\$581
EDR6	\$153	6'	EDR6-6	\$734
EDR8	\$186	8'	EDR8-6	\$887
EDR12	\$252	12'	EDR12-6	\$1,152

* 6 per package

WDR Wooden Display Rail



Features:

- WDR is available in 2 widths – approx. 3" wide with a 1-1/2" tackstrip and approx. 4" wide with a 2-1/2" tackstrip
- Rail mounts directly to wall and can butt to door facing or corner moldings. End stops (furnished) provide a finished look in any length
- Tackable insert in Calyx Cork, Fabriccork, Guilford of Maine FR701 Fabric, and Hook-Fab. See page 7 for colors
- Natural Oak finish
- Available in several finishes as well as unfinished to be painted or finished on the job to match existing walls

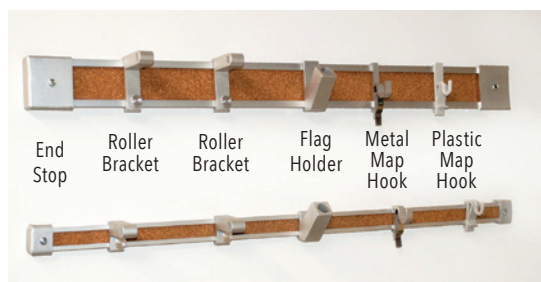
Options:

- For optional 87 Clips for hanging small boards that use keyhole type hangers directly from WDR rail, specify and ADD \$11.

Number	Width	Length	Weight	Price
WDR82-2	3"	2'	1.5 lbs.	\$131
WDR82-4	3"	4'	3 lbs.	\$201
WDR82-6	3"	6'	4 lbs.	\$287
WDR82-8	3"	8'	6 lbs.	\$343
WDR83-2	4"	2'	2 lbs.	\$159
WDR83-4	4"	4'	4 lbs.	\$211
WDR83-6	4"	6'	6 lbs.	\$294
WDR83-8	4"	8'	8 lbs.	\$354

Freight Class 85

Economy and Deluxe Map & Display Rail



Features:

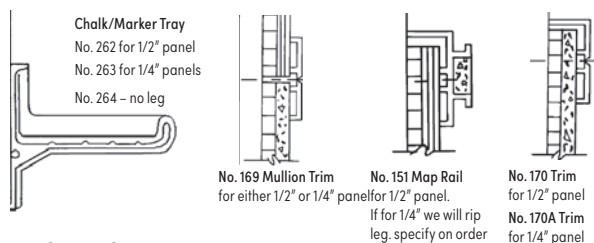
- 51EZ aluminum rail is 1" wide with a 5/8" tan cork insert (unless otherwise specified); 74EZ rail is 2" wide with a 1-5/8" tan cork insert
- Recessed screw guide insures easy installation – angled design keeps insert in place
- Furnished with 1-1/2" pan head screws

	Economy Number	Price	Deluxe Number	Price	Length/Description
Rail	51EZ	\$9.43	74EZ	\$12.36	Less than 100 lin. ft.
	51EZA	\$9.43	74EZA	\$12.36	100 to 200 lin. ft.
	51EZB	\$9.43	74EZB	\$12.36	200 lin. ft. and over
Accessories	51D	\$5.20	74D	\$8.06	Display Rail no insert
	51C	\$2.60	76	\$3.62	Plastic Map Hook
	51M	\$2.79	76M	\$3.84	Metal Map Hook
	51RB	\$15.15	76RB	\$16.16	Roller Brackets
	FH1	\$5.21	FH2	\$7.12	Flag Holders
	51EZPES	\$3.07	74EZES	\$11.51	End Stops
	52ES	\$1.30	75ES	\$3.78	Flat End Stops

Freight Class 85

- Standard lengths for 51EZ: 6'6"; 8'6"; 10'6"; 12'6" and 16'6". 74EZ standard lengths are 6'3", 8'6", 10'6", 12'6" and 17'0".
- 51EZ weighs approx. ¼-lb. per lin. ft.; 74EZ weighs ½-lb. per lin. ft.

Field Assembled Screw-in Aluminum Trim



Stock Lengths:

- Nos. 262, 263, 264, 169, 170, 170A and 151 are available in 8'6", 10'6", 12'6", 17' and 21' lengths. Specify lengths required.

Order Information:

- Always specify NUMBER of pieces required, lengths required and if trim is to be used with 1/4" or 1/2" panels.

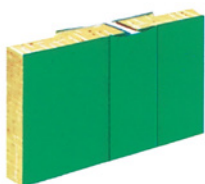
Features:

- Screw-on trim, with exposed fasteners is noted for ease of installation
- Use on field-assembled markerboards, chalkboards, tackboards, or combinations
- Accessory Tray, Mullion Trim, Perimeter Trim and Display Rail available

Note: Weight and price are shown per lineal ft.

Number	Description	Weight per Lin. Ft.	Price per Lin. Ft.
262	Chalk/marker tray	1 lb.	\$17.69
262R-L	R/L End Closures (pr)		\$10.02
263	Chalk/marker tray	.75 lb.	\$13.52
264	Chalk/marker tray	.75 lb.	\$16.56
169	Mullion Trim	.5 lb.	\$6.56
170	Trim	.5 lb.	\$6.59
170A	Trim	.5 lb.	\$6.46
151	Map Rail - 1/2" leg	.5 lb.	\$9.24
151A	Map Rail - 1/4" leg	.5 lb.	\$11.23
151M	Map Rail - no leg	.5 lb.	\$9.24

H-Bar

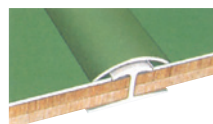


Features:

- Use colored aluminum H-bars for joining 2 or more panels
- H-bar has a 1" face and a 1/2" opening
- Available in lengths up to 12'

Name	Price/Lin. Ft.
H-Bar	\$5.98

66 Extruded Aluminum Joint



Features:

- Designed to fit over H-bar, 66 Joint is 1" wide
- Finished to match writing surface, it covers existing joint and overlaps face sheet
- Furnished with double-sided tape for easy installation
- Available in lengths up to 12'

Name	Price/Lin. Ft.
66	\$7.37

Adhesive



Number	Description	Weight	Price
15G	1 gallon	10 lbs.	\$105
16AT	28 oz. tube	2.75 lbs.	\$70
16A-5G	5 gallon	50 lbs.	\$487
17G	1 gallon	10 lbs.	\$101
18AG	1 gallon	10 lbs.	\$213

5 tubes = 1 gallon

Features:

15 Adhesive – Used for installing unmounted tackboard panels

- Available in 1-gallon cans; coverage varies from 80 to 100 sq. ft.

16 Adhesive – Ultra-low VOC, non-flammable, high performance construction adhesive used for installing framed markerboards, chalkboards, and tackboards as well as unframed panels

- Available in 28 oz. tubes and 5-gallon cans; 1 gallon covers approx. 160 sq. ft. area of factory framed boards or 80 sq. ft. area of materials.

17 Adhesive – Used for installing fabric only (936 Hook-Fab, 3106 Guilford of Maine FR701 Fabric, and 1499 Fabricork vinyl fabric)

- Available in 1-gallon cans; coverage varies from 80 to 100 sq. ft.

Note: Not intended for use when installing fabric as a wall covering.

18 Adhesive – Water-based adhesive designed for the installation of wall panels over clean, dry, and sound wall surfaces finished to a Level 4 or Level 5

- One gallon covers approx. 100 sq. ft.

Roller and Trowel



Features:

Serrated Steel Trowel

- Ideal for spreading markerboard or chalkboard adhesive – is made of masonry trowel steel with a serrated edge with 1/8" notches

Pressure Roller

- Lightweight rubber roller designed for installing replacement skins on existing board surfaces.

Note: A 2-handed roller similar to one used for laying floor tile or linoleum is required for installing vertical wall panels or large runs of markerboard skins.

Number	Description	Weight	Price
65	Serrated Steel Trowel	5 lbs.	\$37
64	Pressure Roller	4 lbs.	\$116

Magnetic Accessory Trays

264M



266MV1



- 264M – Satin anodize finish aluminum tray is 2-3/4" deep
- 264MP – Powder coat finish aluminum tray – See page 38 for color selection
- 266MV1 – Black vinyl tray is 2-1/2" deep

Features:

- Aluminum and vinyl – magnetic trays adhere to all Calyx porcelain enamel steel markerboards and chalkboards as well as other steel surfaces
- Magnet-backed trays are ideal for chalkboard and markerboard accessories, organizing your desk top, displaying art, and copyboards
- Not for use on Glass Markerboards

Number	Length	Finish	Price
264M1	1'	Satin	\$82
264MP1	1'	Powder	\$105
266MV1	1'	Vinyl	\$64

LCS Markers



Options:

- LCS668-2 (2 LCS markers and 1 microfiber cloth) – \$16
- LCS668-4 (4 LCS markers and 1 microfiber cloth) – \$22

Features:

- LCS dry-erase markers are available in 1 dozen lots of each color and as assorted dozens; 4-packs (broad top) available assorted

Number	Color	Price	Number	Color	Price
LCS669	Red	\$44	LCS769	Fine Line – Red	\$44
LCS670	Blue	\$44	LCS770	Fine Line – Blue	\$44
LCS671	Black	\$44	LCS771	Fine Line – Black	\$44
LCS672	Green	\$44	LCS773	Fine Line – Assorted	\$44
LCS673	Assorted	\$44	LCS673-4	4-Pack – Assorted	\$15

Freight class 100

Microfiber Eraser Cloth



Features:

- Microfiber eraser cloth is 12" x 12"
- Furnished with small magnet for easy hanging on board surface
- Erases cleanly with no smearing
- Designed to reduce marker residue build-up

Number	Quantity	Price
ECM227E	Each	\$9
ECM227D	Dozen	\$86
ECM227G	Gross	\$1,024

Calyx White Board Cleaner



Features:

- Cleans and restores LCS markerboard surfaces
- Convenient 8-oz. pump spray bottle and gallon refills

Number	Description	Price
LCS683	Board Cleaner	\$12
LCS683D	Board Cleaner – dozen	\$150
LCS683G	Board Cleaner – gallon	\$105

Freight class 70

80 Partition Panel Clips



Features:

- Spring steel clips fit over the top of any 2" thick partitions. Small prongs fit underneath the board trim

Number	Description	Price/Pair
80	2"	\$31
80-3	3"	\$68

Freight class 70

All items ship UPS Ground. Freight Class as shown.

MATERIALS & FINISHES

The most practical way to rejuvenate old markerboards and chalkboards – use LCS Skins (Face Sheets) over existing badly-worn boards. Framed EZ Fit panels provide yet another option for resurfacing old boards. See page 6 for color options.

LCS Skins with Double-Sided Tape



For cutting to non-standard sizes – vertical and/or horizontal – add \$1.20 per lin. ft.

A \$68 packing charge will be added to orders for less than 200 sq. ft.

Features:

- LCS porcelain enamel steel skins backed with double-sided tape make resurfacing existing boards a breeze
- Measure to verify fit, clean old board surface, position new skin, peel, and stick – it's that easy
- EZ Stick Skins installations use no solvents, eliminate drying time, and are always a consistent thickness
- Face sheets are shipped precut to customer's specifications

Number	Std. Height	Std. Length	Price/sq.ft.
EZ Stick Skins	4'0"	4', 6', 8', 10', 12'	\$21.14

LCS EZ Fit Panels: 3/8" Face Trim



Features:

- EZ Fit panels are designed to fit over existing boards
- Panels are White LCS porcelain enamel steel on Medium Density Fiberboard (MDF) core with a moisture barrier back
- Holes are pre-drilled 2' on center; 1" self-tapping screws included
- Satin anodize aluminum trim

Number	Size (HxW)	Weight	Price
EZL244	4' x 4'	44 lbs.	\$442
EZL246	4' x 6'	66 lbs.	\$615
EZL248	4' x 8'	88 lbs.	\$838
EZL2410	4' x 10'	110 lbs.	\$1,051
EZL2412	4' x 12'	132 lbs.	\$1,217
EZL2416	4' x 16'	176 lbs.	\$1,601

LCS Markerboard Panel



LCS is available in 5'0" heights. Call for pricing and availability.

For cutting to non-standard sizes – vertical and/or horizontal – add \$1.20 per lin. ft.

A \$68 packing charge will be added to orders for less than 200 sq. ft.

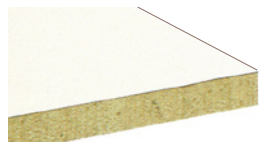
For chalkboard panels specify color and use price shown.

Features:

- LCS porcelain enamel steel surface mounted on either 7/16" or 1/4" MDF core with a moisture barrier back. Standard height is 4'0"; standard lengths are 4', 6', 8', 10', 12', and 16'
- Made from enameling grade steel during a 3-coat process, the LCS markerboard surface writes smoothly and erases cleanly
- Use with screw-on trim shown on page 32, for custom framing or for OEM applications

Number	Core	Price/sq.ft.
LCS-315-M	1/4" MDF core	\$18.63
LCS-217-M	7/16" MDF core	\$21.12

MLC Melamine Markerboard Panel



Cutting and packing charges will apply.

Features:

- Melamine provides a smooth, white, non-magnetic writing surface
- Panel is 1/4" thick
- For use with LCS markers

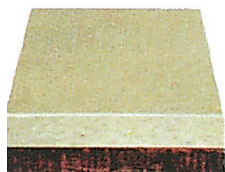
Number	Core	Price/sq.ft.
1032	1/4" Panel	\$8.06

Calyx Cork

Calyx cork is made from renewable raw materials. The combination of oxidized linseed oil, resin, cork and pigments in the product gives Calyx Cork flexibility and resilience. Calyx Cork has a smooth, uniformly dense, suede-like surface with exceptional durability.



1/4" Unmounted Cork



1/4" Mounted Cork

See page 7 for these color options:

1100 Tan	1117 Salsa
1103 Oyster	1118 Tangerine
1104 Cinnamon	1119 Pineapple
1108 Mushroom	1120 Lettuce
1109 Buff	1129 Blueberry
1110 Fawn	1132 Black
1111 Smoke	1136 Graphite
1113 Steel Gray	

Features:

- Calyx Cork is made from pure natural ingredients
- The color-impregnated surface is durable, soil resistant, and washable
- Burlap backed, Calyx Cork is dimensionally stable and will not warp or crumble
- Meets ASTM E-84 and meets or exceeds MIL-C-15116-C, Type 1
- No toxins or harmful emissions

Standard Sizes:

- Calyx cork is priced on the basis of 4' height and 1' increments in length.
- All unmounted cork is shipped oversize for cutting to exact size on the job
- Mounted cork available in lengths up to 16'
- Full rolls of Calyx Cork average 95' in length. Invoicing is based on actual square footage shipped

Cutting Charge:

- For cutting mounted Calyx Cork to non-standard sizes – vertical and/or horizontal – add \$1.25 per lin. ft.

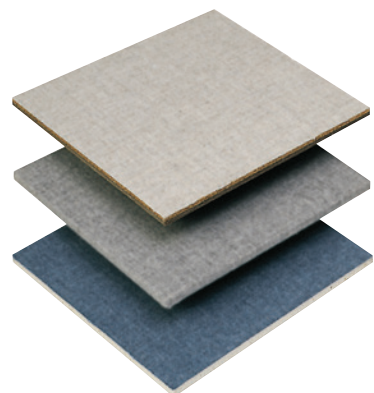
Packing Charge:

- A \$71 packing charge will be added to orders for less than 200 sq. ft. of mounted Calyx Cork.

Number	Description	Cork Thickness	Backing	Weight	Price/sq. ft.	Price/Roll
1199	Unmounted Cork 4' roll	1/4"	Heavy Burlap	1lb.	\$15.34	\$5,767
1199A	Under 200 sq. ft.	1/4"	Heavy Burlap	1lb.	\$16.97	
1199B	Over 200 sq. ft.	1/4"	Heavy Burlap	1lb.	\$16.69	
1190	Mounted Corkboard	1/4"	Burlap on Hardboard	2lbs.	\$22.26	

Guilford of Maine FR701 Fabric Series Bulletin Board

Fabric Series fabrics (Guilford® FR701 pattern) provide tack surfaces with classic appeal, ideal in any environment. Durable, easy to clean, and sustainable, Fabric Series fabrics are made from 100% recycled polyester. Additional Guilford colors and fabrics optional.



See page 7 for these color options:

1679 Cardinal	1686 Dark Pearl
1680 Lime	1688 Cobalt
1681 Cement Mix	1689 Wedgewood
1683 Silver	1690 Grey Mix
1684 Noir	1691 Quartz
1685 Flannel	1692 Wheat

Unmounted materials up to 120 lbs. and mounted panels up to 4' x 4' can ship UPS Ground. Freight Class 70.

Features:

- Fabric Series fabrics are offered in laminated panel form, fabric with cork underlay, or as fabric only
- Colorfast, soil and stain resistant
- Fabric meets ASTM-E 84 Flame Tunnel Test Class "A" Rating
- Standard Sizes: All mounted Guilford of Maine FR701 Fabric Series panels (except 3106) will be priced on the basis of 4' heights and 1' increments in length. 3106 is 66" wide; cut to size pieces will be billed on the basis of 5' heights and 1' increments in length. Full rolls vary in length from 165' to 180'. Billing is based on actual square footage shipped.

Note: 3100 may be shipped oversize for cutting to exact size on job.

Cutting Charge:

- For cutting to non-standard sizes – vertical and/or horizontal – (except 3106) add \$1.25 per lin. ft.

Packing Charge:

- A \$71 packing charge will be added to orders for less than 200 sq. ft. of Guilford of Maine FR701 Fabric (except 3100 and 3106).

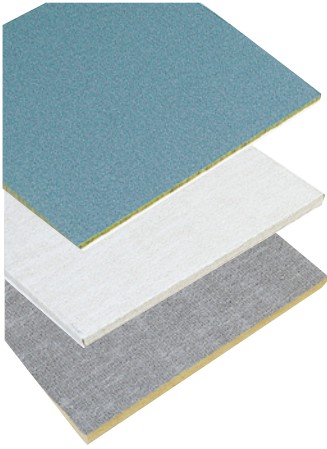
Options:

- C.O.M. fabrics approved for vertical surfaces in lieu of Guilford of Maine FR701 Fabric – call for pricing

Number	Description	Max Length	Weight/sq. ft.	Price/sq. ft.
3100	Fabric on cork underlay			
3100A	Cut to Size – Less than 200 sq. ft.	16'	1/2 lb.	\$15.13
3100B	Cut to Size – 200 sq. ft. or more	16'	1/2 lb.	\$15.13
3101	Fabric on underlay on Duracore-1/2" overall	12'	1-1/8 lbs.	\$14.70
3101EW	Fabric on underlay on Duracore w/edges wrapped	12'	1-1/8 lbs.	\$15.88
3102	Fabric on cork underlay on 1/4" hardboard – 1/2" overall	16'	1-1/2 lbs.	\$17.70
3102EW	Fabric on cork underlay on 1/4" hardboard with edges wrapped – 1/2" overall	16'	1-1/2 lbs.	\$18.97
3103	Fabric on duracore (not fire retardant)	12'	1 lb.	\$12.24
3103EW	Fabric on duracore (not fire retardant) with edges wrapped	12'	1 lb.	\$13.35
3104	Fabric on 7/16" fire retardant Duracore	12'	1 lb.	\$13.35
3104EW	Fabric on 7/16" fire retardant Duracore with edges wrapped	12'	1 lb.	\$15.58
3106	Full Rolls – Guilford of Maine FR701 Fabric only	Approximately 165'	1/8 lb.	\$6.44
3106A	Cut to Size – Guilford of Maine FR701 Fabric only	165'	1/8 lb.	\$6.64

Fabricork

Fabricork, in 4 distinct patterns – Viewpoint, Esquire, Linden, and Belair, is available in a wide range of colors. Superior in style and performance, Fabricork is long-lasting and easy to clean. Fabricork vinyl fabric (Koroseal®) is a product of RJF International.



See page 7 for color options

* Fire retardant Duracore backer board has a Class A Fire Rating per ASTM E84 as follows – Flame Spread 25, Smoke Developed 20

Features:

- Fabricork has a washable, stain resistant surface
- Vinyl coated fabric retains new appearance – wears indefinitely
- Vinyl fabric meets or exceeds Federal Specifications CCC-W-408A
- Available as fabric only, fabric mounted on cork underlay, and as mounted Fabricork tackboard panels

Standard Sizes:

- Fabricork panels are priced on the basis of 4' height and 1' increments in length.

Cutting Charge:

- For cutting to non-standard sizes – vertical and/or horizontal – add \$1.20 per lin. ft.

Packing Charge:

- A \$71 packing charge will be added to orders for less than 200 sq. ft. of Fabricork panels (except 1500).

Options:

- Fabric covered H-Bar joints for joining 2 unframed panels. If required, specify and ADD \$8.74 per lin. ft. (12' maximum length)
- C.O.M. vinyls approved for vertical surfaces can be used. See C.O.M. and special fabric note in Terms and Conditions.

Number	Description	Thickness	Max Length	Weight/sq. ft.	Price/sq. ft.
1380	Fabric on cork underlay on Duracore	1/2"	12'	1 lb.	\$11.69
1380EW	1380 with edges wrapped	1/2"	12'	1 lb.	\$13.08
1381FR	Fabric on flame retardant Duracore*	1/2"	12'	1 lb.	\$8.84
1381FREW	1381 with edges wrapped	1/2"	12'	1 lb.	\$10.86
1500 (Full Rolls)	Fabric on cork underlay	1/4"	80'	1/2 lb.	\$9.69
1500A	Fabric on cork underlay. Under 200 sq.ft.	1/4"	80'	1/2 lb.	\$10.40
1500B	Fabric on cork underlay. Over 200 sq.ft.	1/4"	80'	1/2 lb.	\$10.40
1499	Fabric only, no underlay		90'	1/8 lb.	\$3.30
1550	Fabric on cork underlay on Hardboard	1/2"	16'	1-1/2 lbs.	\$15.09
1550EW	1550 with edges wrapped	1/2"	16'	1-1/2 lbs.	\$16.26

Tan Nucork

Tan Nucork is a premium grade, fine grain natural tan composition cork. Nucork is dimensionally stable and has uniform density and particle size.



Note: Unmounted cork is shipped oversize for cutting to exact size on job.

Features:

- An economical tackboard surface, Tan Nucork is pure grain natural cork without burlap backing
- Nucork has a smooth, resilient surface ideal for use with pins or thumbtacks
- 150 FR Nucork has a Class B fire rating based on ASTM E84 tunnel test as follows: flame spread – 65; smoke developed – 70. Meets military specification MIL-C-15116, Type II
- Available unmounted – by the piece or in full rolls, and mounted on either duracore or hardboard
- Standard height is 4'; mounted nucork available in lengths up to 16', except 380A which is 12' maximum
- Full rolls are approximately 90' long. (Lengths of rolls vary. Billing based on actual square footage shipped.)

Cutting Charge:

- For cutting mounted Nucork to non-standard sizes – vertical and/or horizontal – add \$1.25 per lin. ft.

Packing Charge:

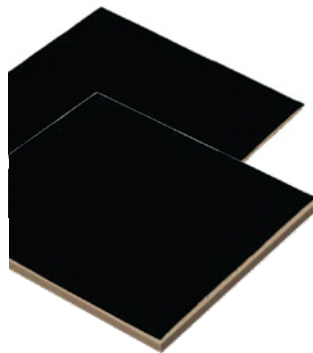
- A \$71 packing charge will be added to orders for less than 200 sq. ft. of mounted Nucork.

Number	Description	Thickness	Backing	Weight	Price/sq. ft.	Price/Roll
150	Full Rolls only	1/4"	None	1/4 lb.		\$2,047
150A	Under 200 sq. ft.	1/4"	None	1/4 lb.	\$6.64	
150B	Over 200 sq. ft.	1/4"	None	1/4 lb.	\$6.64	
150FR	Full Rolls only	1/4"	None	1/4 lb.		\$3,870
150FRA	Under 200 sq. ft.	1/4"	None	1/4 lb.	\$12.95	
150FRB	Over 200 sq. ft.	1/4"	None	1/4 lb.	\$11.65	
380A		1/16"	Duracore	3/4 lb.	\$9.13	
550		1/4"	Hardboard	1/2 lb.	\$12.20	

Unmounted materials up to 120 lbs. and mounted panels up to 4' x 4' can ship UPS Ground. Freight Class 70.

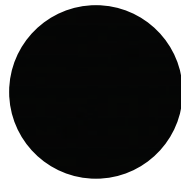
Hook-Fab

Hook-Fab is a hook-and-loop compatible non-woven fabric made from 100% nylon with polyester foam core and nylon tricot backing. Easily cut to size, Hook-Fab can be used with hook-and-loop fasteners, tacks or push pins. The low maintenance, stain resistant surface makes Hook-Fab ideal for any environment.



No. 930 Hook-Fab
on cork underlay

No. 934 Hook-Fab on
cork underlay on 1/4"
hardboard



976 Black

Hooktape

Features:

- Hook-Fab can be used with hooktape as well as thumbtacks and pushpins.
- Offered in laminated panel form, fabric with cork underlay, or as fabric only
- Hook-Fab is renowned for its resistance to soil and staining and will not fade
- Lightweight and pliable, yet durable enough to stand up to heavy use, Hook-Fab combines good looks with superior performance

Standard Sizes:

- Hook-Fab panels (except 936 which is 55" wide) are priced on the basis of 4' height and 1' increments in length. No. 930 may be shipped oversize for cutting to actual size on job

Cutting Charge:

- For cutting mounted Hook-Fab to non-standard sizes – vertical and/or horizontal – add \$1.25 per lin. ft.

Packing Charge:

- A \$71 packing charge will be added to orders for less than 200 sq. ft. of mounted Hook-Fab.

Note: Cutting Charge and Packing Charge do not apply to No. 936. No hanging devices are included with edge-wrapped material.

Number	Description	Max Length	Weight/sq. ft.	Price/sq. ft.
930	Fabric on cork underlay			
930A	Cut to Size – Less than 200 sq. ft.	16'	1/2 lb.	\$18.97
930B	Cut to Size – 200 sq. ft. or more	16'	1/2 lb.	\$18.97
934	Fabric on cork underlay on hardboard	16'	1-1/2 lbs.	\$21.42
934EW	934 with edges wrapped	16'	1-1/2 lbs.	\$18.20
935	Fabric on fire retardant Duracore	12'	1 lb.	\$16.03
935EW	935 with edges wrapped	12'	1 lb.	\$17.26
936	Hook-Fab fabric only – 55" wide	120'	1/16 lb.	\$8.67
937	Fabric on Duracore	12'	1 lb.	\$15.41
937EW	Fabric on Duracore with Edges Wrapped	12'	1 lb.	\$16.24
923	Self gripping Hooktape, pre-glued, pressure-sensitive back, available in 1" x 7' long rolls		(per roll)	\$69

Frame Finishes

Frames available in aluminum or wood. Aluminum frames in satin anodize or Medium or Dark Bronze color anodize, powder coat in 302P Black and 314P Bronze, standard powder coat finishes, three textured finishes and five transparent powder coat finishes. Wood frames are available in a variety of finishes.

Wood Finishes



Natural Oak



Medium Oak



Maple



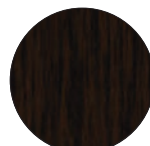
Mahogany



Cherry



Walnut

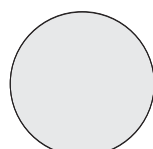


Espresso

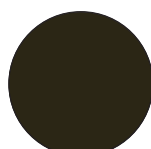


Ebony

Aluminum Finishes



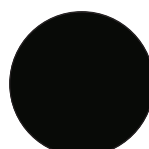
Satin Anodized



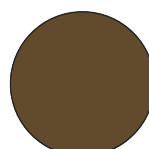
Medium Bronze



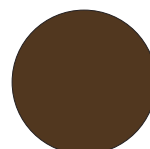
Dark Bronze



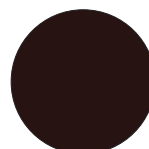
302P Matte Black



314P Bronze

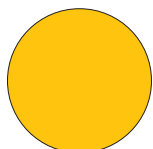
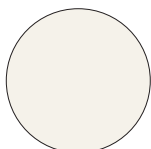
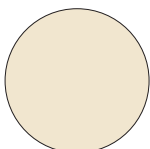
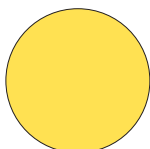
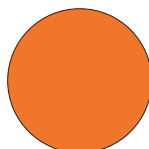
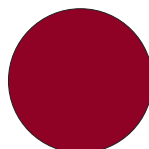
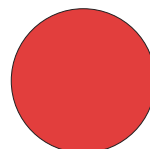
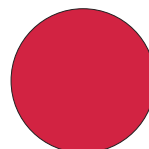
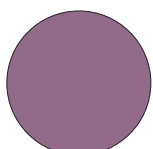
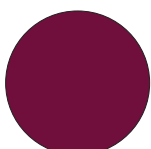
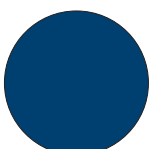
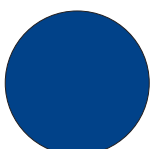
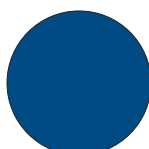
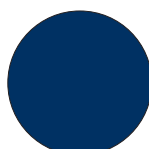
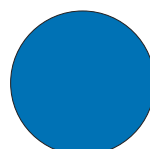
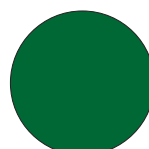
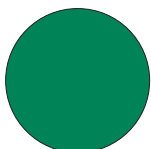
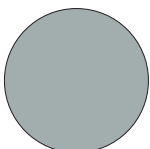
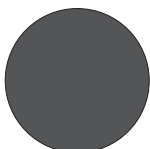
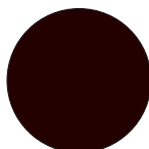
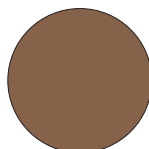
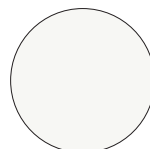
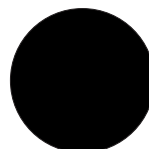


360P Bronze

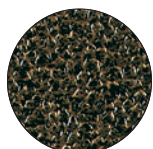


313P Bronze

Powder Coat Finishes for Aluminum

RAL1003
Signal YellowRAL1013
Oyster WhiteRAL1015
Light IvoryRAL1018
Zinc YellowRAL2009
Taffic OrangeRAL3003
Ruby RedRAL3018
Strawberry RedRAL3020
Traffic RedRAL4001
Red LilacRAL4004
Claret VioletRAL5000
Violet BlueRAL5002
Ultramarine BlueRAL5005
Signal BlueRAL5013
Cobalt BlueRAL5015
Sky BlueRAL6002
Leaf GreenRAL6005
Moss GreenRAL6024
Traffic GreenRAL7001
Silver GreyRAL7015
Slate GreyRAL8017
Chocolate BrownRAL8025
Pale BrownRAL9003
Signal WhiteRAL9005
Jet Black

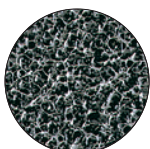
Optional Textured Finishes



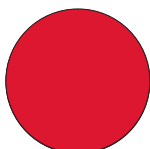
Goldtone Vein



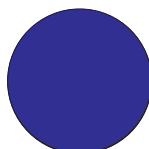
Antique Copper Vein



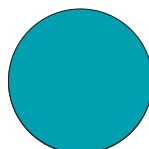
Bonded Silver Vein



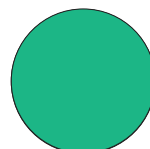
Candy Red



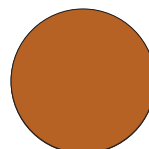
Candy Purple



Candy Teal



Transparent Green



Copper Powder

Optional Transparent Finishes

Colors are reproduced with reasonable accuracy. If match is critical, call or write for samples.

terms and conditions

DISCLAIMER – The Terms & Conditions below expressly set forth Calyx Products and Equipment, Inc.'s position and are not intended to be a full, comprehensive, and complete detail of each subject. Calyx reserves the right to alter, change, modify, expand, or discontinue any of the policies set forth below. Calyx further reserves the right to alter, change, modify, or discontinue its programs, policies, or relationship with any customer who violates Calyx's stated Terms & Conditions.

SPECIFICATION CHANGES

Calyx reserves the right to institute changes to material, parts, or design as well as to discontinue models, options, and/or parts without any prior notice. Price subject to change without notice.

ORDERS

All orders must be submitted in writing by US Mail, Fax, or E-mail. It is the Buyer's sole responsibility to check orders and their corresponding acknowledgments for accuracy. Minimum order of \$25.

ACKNOWLEDGMENTS & LEAD TIMES

Upon credit approval, orders will be manufactured and invoiced based upon the information on the acknowledgment. It is the Buyer's responsibility to notify Calyx of any acknowledgment discrepancies. Actual shipment dates may differ from acknowledged dates due to lack of credit approval. If an order is subject to a credit hold, it will be scheduled for shipment only after it is released from credit hold.

CPR (CALYX PRIORITY RESPONSE)

Calyx offers three levels of CPR: (1) CPR Urgent – a guarantee that the order will ship within one week once Buyer agrees to CPR terms; (2) CPR Express – a guarantee that the order will ship within two weeks once CPR terms are accepted; and (3) CPR Standard – a guarantee that the order will ship within three weeks once terms are accepted. If Buyer's order is shipped late, Calyx pays a 10% penalty for every day the order ships late – up to the total cost of the material. Talk to a customer service representative for available options.

CHANGE ORDERS

Calyx reserves the right to apply additional charges to the invoice for orders revised after manufacturing has begun. All changes must be in writing.

TERMS

For credit approved customers, all merchandise will be invoiced when shipped, with standard terms of net 30 Days. The Buyer agrees that Calyx shall have the right to assess interest charges of 1.5% per month on invoices not paid and received by Calyx within terms. The Buyer further agrees that Calyx has the right to change terms, suspend shipments, or refuse orders from any delinquent account.

SECURITY

The Buyer agrees that Calyx maintains a security interest in all merchandise sold by it to the Buyer until all monies have been paid to Calyx for said merchandise.

CANCELLATION

All orders are considered firm and cannot be cancelled except by consent from Calyx. Calyx reserves the right to assess a Cancellation Fee of no more than 25%, or as negotiated, for any order cancelled by the Buyer.

FREIGHT POLICY

Every effort will be made to ship in accordance with customer requested freight carriers. Calyx is not responsible for damage in shipment when product is shipped on a third party or collect basis. In the event of visible freight damage, note damage on the freight bill and notify the carrier at once for inspection. Note that carriers require reports of damage within 5 days. Failure to report visible damage or loss is the consignee's responsibility. Concealed damage identified after 5 days from receipt is the sole responsibility of the consignee.

SHIP DATES & DELAYS

If Calyx cannot ship products as scheduled due to causes beyond their reasonable control (force majeure), the ship date will be extended to compensate for the delay as determined by Calyx.

REDELIVERY OF FREIGHT

Two weeks notice is required when redelivery of merchandise will be required, or the actual cost for freight, restocking and rehandling, and storage, if applicable, will be billed to the customer.

RETURNS

Many Calyx products are made-to-order and may not be returned. Calyx reserves the right to refuse return of custom-made or specialty merchandise. All approved returns must be prepaid by the Buyer and are subject to a restocking charge of no greater than 25%. Merchandise must be returned unused, and properly packaged in original shipping carton.

WARRANTY

Calyx porcelain enamel steel markerboard and chalkboard writing surfaces are guaranteed for the Life of the Building. Other product in Catalog carries a one year guarantee against defects in materials and workmanship.

CUSTOM PRODUCTS

Modifications to standard products are available. Contact the factory – or the Calyx location nearest you for quotations.

MATERIAL DISCLAIMER

Slight color variations may occur on surface materials. Calyx cannot be held responsible for reasonable variances.

C.O.M. & SPECIAL FABRICS DISCLAIMER

Calyx cannot be held responsible for special fabrics that, in our opinion, would create unsatisfactory results for the intended application using normal manufacturing methods. Sampling may be required. All inquiries and correspondence should be directed to: Calyx Products and Equipment, Inc.

805 Cottonwood Road, Annex 3, Harrison, AR 72601

Phone: 870-743-2200 Toll Free: 800-434-4610

Fax: 870-743-1908

E-mail: claridge@claridgeproducts.com

Talk to a Calyx writing surface expert today to learn how
we turn workspaces into idea places.

