



CONTRACT FURNITURE & INTERIORS

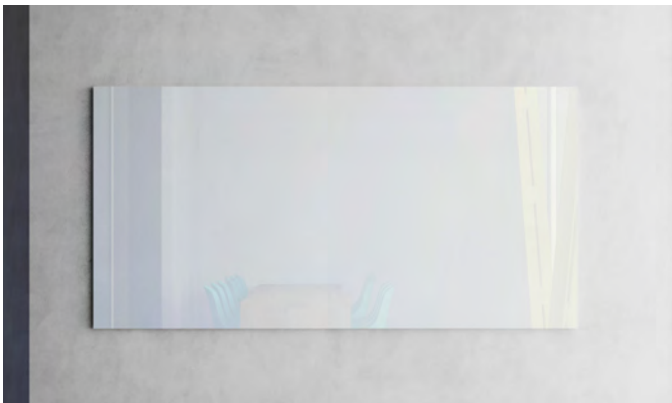
Pricing Effective January 2024

Table of Contents

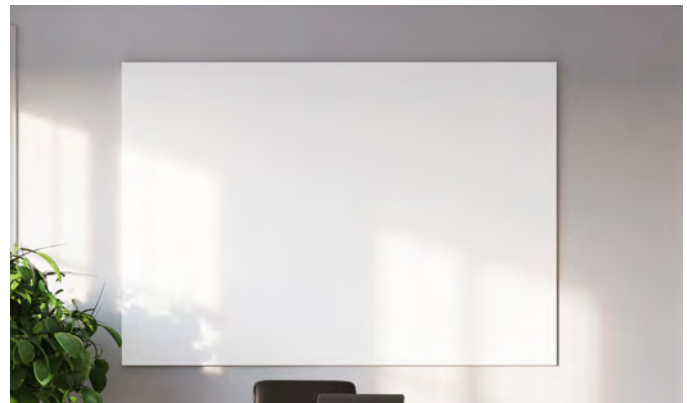
3	Magnetic and Non-Magnetic Glass Markerboard	15	MIX Industrial Mobile
4	Non-Glare Glass Markerboard	16	Switch and Venue V-Leg Mobile
5	Ombria Gradient Glass - NEW	17	Venue T-Leg Mobiles and Space Creator
5	Profile Porcelain Markerboard	18	Mina Mobile and Space Creator - NEW
6	Cursive and Cursive:One Boards - NEW	19	Connect X2 Mobile
7	Ravina Board - NEW	19	Edify Mobile
8	MIX Wall Mounted Markerboards and Tackboard	20	Connect X2 Space Creator
9	Concept Aluminum Frame Markerboard	20	Ripple Divider
9	Motif Wood Framed Board	21	Aceno Collection and Nimbus
10	Connect X2 Modular Board	22	Large Format Marker Systems and Tack Wall
11	Evolve Markerboard, Tackboard and Sliding System	23	Accessories
12	Trak-It Sliding System	24	TacPad
12	Xchange Graphic Board	24	Trim Colors
12	Horizontal Sliding Board System	25	Ombria Glass Colors
13	Switch and Venue Wall Mounted Markerboard	26	Fabrics and Calyx Cork
14	MIX Contemporary Mobile	27	Materials and Finishes

Writing Surfaces and Standard Colors

A dry erase markerboard's effectiveness as a communication tool is only as good as its writing surface, which is the primary medium for exchanging visual information. Not all writing surfaces are equal, and the quality and composition of the material used to make them directly affect the user experience.



Invisi-Mount Calyx Glass Markerboard



Profile LCS Porcelain Markerboard

Calyx Glass Colors



*Brilliant White Calm White Light Ivory Telegrey Signal Grey Sage Plum Storm Zest Terracotta

*Standard glass markerboard color comes in Brilliant White

LCS Porcelain Colors



White Light Grey Beige

LCS Chalkboard Colors

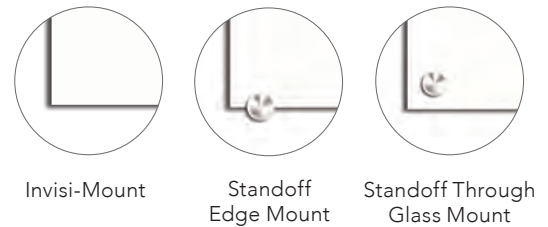


Green Black Grey

Glass Markerboards

Magnetic and Non-Magnetic Glass Markerboard

Calyx Glass Markerboards are stylish, functional and easy to maintain, glass markerboards add class to any environment. 1/4" thick glass is powder coated in your choice of 10 standard or over 180 optional colors. **Brilliant White is furnished if color not specified.** Custom colors and custom logos optional.



Magnetic Glass Markerboards are furnished with 4 rare-earth magnets. Calyx Glass markerboards are offered with three mounting options – stand-off edge mount, stand-off through glass mount, or invis-mount - no visible mounting hardware. Stand-off mounts come with 4 mounts for 4' widths and under; 6 mounts for 5' to 8' widths; and 8 mounts for 10' widths.

Magnetic Glass with Invisi-mount

Number	Size (HxW)	Weight	Price
MGMI-23	24" x 36"	48 lbs.	\$675
MGMI-34	36" x 48"	96 lbs.	\$1,075
MGMI-35	36" x 60"	120 lbs.	\$1,325
MGMI-44	48" x 48"	128 lbs.	\$1,375
MGMI-45	48" x 60"	160 lbs.	\$1,725
MGMI-46	48" x 72"	195 lbs.	\$2,075
MGMI-48	48" x 96"	256 lbs.	\$2,775
MGMI-410	48" x 120"	320 lbs.	\$3,250
MGMI-412	48" x 144"	384 lbs.	\$4,150
MGMI-56	60" x 72"	240 lbs.	\$2,525
MGMI-58	60" x 96"	320 lbs.	\$3,350
MGMI-510	60" x 120"	400 lbs.	\$4,265

Freight Class 70

Magnetic Glass w/ Stand-off Edge Mount

Number	Size (HxW)	Weight	Price
MGM23	24" x 36"	48 lbs.	\$720
MGM34	36" x 48"	96 lbs.	\$1,100
MGM35	36" x 60"	120 lbs.	\$1,350
MGM44	48" x 48"	128 lbs.	\$1,400
MGM45	48" x 60"	160 lbs.	\$1,750
MGM46	48" x 72"	195 lbs.	\$2,100
MGM48	48" x 96"	256 lbs.	\$2,800
MGM410	48" x 120"	320 lbs.	\$3,275
MGM412	48" x 144"	384 lbs.	\$4,175
MGM56	60" x 72"	240 lbs.	\$2,550
MGM58	60" x 96"	320 lbs.	\$3,375
MGM510	60" x 120"	400 lbs.	\$4,290

Freight Class 70

Magnetic Glass w/ Stand-off Through Glass Mount

Number	Size (HxW)	Weight	Price
MGM23-TG	24" x 36"	48 lbs.	\$1,000
MGM34-TG	36" x 48"	96 lbs.	\$1,475
MGM35-TG	36" x 60"	120 lbs.	\$1,835
MGM44-TG	48" x 48"	128 lbs.	\$1,750
MGM45-TG	48" x 60"	160 lbs.	\$1,980
MGM46-TG	48" x 72"	195 lbs.	\$2,365
MGM48-TG	48" x 96"	256 lbs.	\$3,148
MGM410-TG	48" x 120"	320 lbs.	\$3,850
MGM56-TG	60" x 72"	240 lbs.	\$2,900
MGM58-TG	60" x 96"	320 lbs.	\$3,650
MGM510-TG	60" x 120"	400 lbs.	\$4,460

Freight Class 70

Non-Magnetic Glass w/ Invisi-mount

Number	Size (HxW)	Weight	Price
PGBI-23	24" x 36"	48 lbs.	\$625
PGBI-34	36" x 48"	96 lbs.	\$1,040
PGBI-35	36" x 60"	120 lbs.	\$1,300
PGBI-44	48" x 48"	128 lbs.	\$1,350
PGBI-45	48" x 60"	160 lbs.	\$1,697
PGBI-46	48" x 72"	195 lbs.	\$1,955
PGBI-48	48" x 96"	256 lbs.	\$2,600
PGBI-410	48" x 120"	320 lbs.	\$3,150
PGBI-56	60" x 72"	240 lbs.	\$2,450
PGBI-58	60" x 96"	320 lbs.	\$2,931
PGBI-510	60" x 120"	400 lbs.	\$4,000

Freight Class 70

Non-Magnetic Glass w/ Stand-off Edge Mount

Number	Size (HxW)	Weight	Price
PGB-23	24" x 36"	48 lbs.	\$650
PGB-34	36" x 48"	96 lbs.	\$1,000
PGB-35	36" x 60"	120 lbs.	\$1,300
PGB-44	48" x 48"	128 lbs.	\$1,320
PGB-45	48" x 60"	160 lbs.	\$1,650
PGB-46	48" x 72"	195 lbs.	\$1,980
PGB-48	48" x 96"	256 lbs.	\$2,600
PGB-410	48" x 120"	320 lbs.	\$3,175
PGB-56	60" x 72"	240 lbs.	\$2,450
PGB-58	60" x 96"	320 lbs.	\$2,931
PGB-510	60" x 120"	400 lbs.	\$4,000

Freight Class 70

Non-Magnetic Glass w/ Stand-off Through Glass Mount

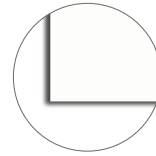
Number	Size (HxW)	Weight	Price
PGB-23-TG	24" x 36"	48 lbs.	\$854
PGB-34-TG	36" x 48"	96 lbs.	\$1,193
PGB-35-TG	36" x 60"	96 lbs.	\$1,550
PGB-44-TG	48" x 48"	128 lbs.	\$1,470
PGB-45-TG	48" x 60"	160 lbs.	\$1,850
PGB-46-TG	48" x 72"	195 lbs.	\$2,100
PGB-48-TG	48" x 96"	256 lbs.	\$2,700
PGB-410-TG	48" x 120"	320 lbs.	\$3,300
PGB-56-TG	60" x 72"	240 lbs.	\$2,475
PGB-58-TG	60" x 96"	320 lbs.	\$3,300
PGB-510-TG	60" x 120"	400 lbs.	\$4,100

Freight Class 70

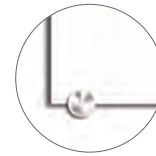
See page 23 for magnetic markerboard accessories

Non-Glare Calyx Glass Markerboard

Non-Glare Calyx Glass markerboards are offered with three mounting options – stand-off edge mount, stand-off through glass mount, or invis-mount, no visible mounting hardware. 1/4" thick glass is powder coated in your choice of 10 standard or over 180 optional colors. **Brilliant White is furnished if color not specified.** Custom colors and custom logos optional.



Invisi-Mount



Standoff Edge Mount



Standoff Through Glass Mount

Magnetic Glass Markerboards are furnished with 4 rare-earth magnets. Calyx Glass markerboards are offered with three mounting options – stand-off edge mount, stand-off through glass mount, or invis-mount - no visible mounting hardware. Stand-off mounts come with 4 mounts for 4' widths and under; 6 mounts for 5' to 8' widths; and 8 mounts for 10' widths.

Magnetic Glass with Invisi-mount

Number	Size (HxW)	Weight	Price
MGMI-34-NG	36" x 48"	96 lbs.	\$2,079
MGMI-44-NG	48" x 48"	128 lbs.	\$2,772
MGMI-46-NG	48" x 72"	195 lbs.	\$4,158
MGMI-48-NG	48" x 96"	256 lbs.	\$5,376
MGMI-410-NG	48" x 120"	320 lbs.	\$6,720
MGMI-56-NG	60" x 72"	240 lbs.	\$5,040
MGMI-58-NG	60" x 96"	320 lbs.	\$6,720
MGMI-510-NG	60" x 120"	400 lbs.	\$8,400

Freight Class 70

Non-Magnetic Glass w/ Invisi-mount

Number	Size (HxW)	Weight	Price
PGBI-34-NG	36" x 48"	96 lbs.	\$1,985
PGBI-44-NG	48" x 48"	128 lbs.	\$2,646
PGBI-46-NG	48" x 72"	195 lbs.	\$3,843
PGBI-48-NG	48" x 96"	256 lbs.	\$5,124
PGBI-410-NG	48" x 120"	320 lbs.	\$6,405
PGBI-56-NG	60" x 72"	240 lbs.	\$4,804
PGBI-58-NG	60" x 96"	320 lbs.	\$6,405
PGBI-510-NG	60" x 120"	400 lbs.	\$8,006

Freight Class 70

Magnetic Glass w/ Stand-off Edge Mount

Number	Size (HxW)	Weight	Price
MGM34-NG	36" x 48"	96 lbs.	\$2,100
MGM44-NG	48" x 48"	128 lbs.	\$2,793
MGM46-NG	48" x 72"	195 lbs.	\$4,179
MGM48-NG	48" x 96"	256 lbs.	\$5,397
MGM410-NG	48" x 120"	320 lbs.	\$6,741
MGM56-NG	60" x 72"	240 lbs.	\$5,061
MGM58-NG	60" x 96"	320 lbs.	\$6,741
MGM510-NG	60" x 120"	400 lbs.	\$8,421

Freight Class 70

Non-Magnetic Glass w/ Stand-off Edge Mount

Number	Size (HxW)	Weight	Price
PGB-34-NG	36" x 48"	96 lbs.	\$1,953
PGB-44-NG	48" x 48"	128 lbs.	\$2,604
PGB-46-NG	48" x 72"	195 lbs.	\$3,906
PGB-48-NG	48" x 96"	256 lbs.	\$5,208
PGB-56-NG	60" x 72"	240 lbs.	\$4,883
PGB-58-NG	60" x 96"	320 lbs.	\$6,510

Freight Class 70

Magnetic Glass w/ Stand-off Through Glass Mount

Number	Size (HxW)	Weight	Price
MGM34-NG-TG	36" x 48"	96 lbs.	\$2,190
MGM44-NG-TG	48" x 48"	128 lbs.	\$2,920
MGM46-NG-TG	48" x 72"	195 lbs.	\$4,380
MGM48-NG-TG	48" x 96"	256 lbs.	\$5,840
MGM410-NG-TG	48" x 120"	320 lbs.	\$7,300
MGM56-NG-TG	60" x 72"	240 lbs.	\$5,475
MGM58-NG-TG	60" x 96"	320 lbs.	\$7,300
MGM510-NG-TG	60" x 120"	400 lbs.	\$9,125

Freight Class 70

Non-Magnetic Glass w/ Stand-off Through Glass Mount

Number	Size (HxW)	Weight	Price
PGB-34-NG-TG	36" x 48"	96 lbs.	\$2,100
PGB-44-NG-TG	48" x 48"	128 lbs.	\$2,920
PGB-46-NG-TG	48" x 72"	195 lbs.	\$4,410
PGB-48-NG-TG	48" x 96"	256 lbs.	\$5,880
PGB-410-NG-TG	48" x 120"	320 lbs.	\$7,350
PGB-56-NG-TG	60" x 72"	240 lbs.	\$5,513
PGB-58-NG-TG	60" x 96"	320 lbs.	\$7,350
PGB-510-NG-TG	60" x 120"	400 lbs.	\$9,188

Freight Class 70

See page 23 for magnetic markerboard accessories

Glass Board Printing

Ombria Gradient Glass - NEW

Ombria gradients combine the look of art with the functionality of a writing surface. Colors flow seamlessly in a single glassboard for visual impact. Choose two or three tone gradients to create an art piece that is useful for collaboration with a magnetic surface. Gradients with one tone to transparency are not magnetic and available on Mina mobiles and wall-mounted glass boards with invisimount, edge or through mounts.

Choose from 50 standard preset gradient colors or create custom gradients - see page 25 for color options. Ombria gradient can be applied to any glass panel – wall-mounted, mobile, or space creator.



Ombria Gradient Printing

Number	Price/sq.ft.
ADD-OMBRIA-STD	\$12
ADD-OMBRIA-CUST	\$24

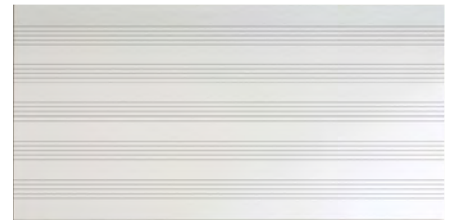
Custom Printing

Create a custom printed glassboard by uploading your own artwork. Print anything from logos, photos, art, to make a lasting impression.



Custom Printing

Number	Price/sq.ft.
ADD-GLASS-CUST-GRAPHICS	\$24



Standard Graphic Printing

Number	Price/sq.ft.
ADD-GLASS-STD-GRAPHICS	\$12

All Ombria pricing is net

Custom Standard Graphics

Choose from a variety of our most popular graphics including Lined, Grid, Music, Calendar, Football, Basketball, & Math to enhance your workspace. Perfect for schools, offices or wherever printed graphics make writing easier.

Porcelain Markerboards

Profile Frameless LCS Porcelain Markerboard

Profile's incredibly smooth LCS Porcelain surface delivers a great writing experience that will stand the test of time. With simple installation and Invisi-Mount, these low profile markerboards appear to float on the wall. LCS Porcelain steel accepts magnets, won't ghost or stain, and is warrantied for life. Available in LCS White, Light Gray, or Beige color options and in 1/2" and 3/4" bevel panel thickness.



1/2" Profile with Invisi-Mount

Number	Size (HxW)	Weight	Price
FPM12-0203-Z	24" x 36"	24 lbs.	\$645
FPM12-0304-Z	36" x 48"	48 lbs.	\$900
FPM12-0404-Z	48" x 48"	64 lbs.	\$1,080
FPM12-0405-Z	48" x 60"	80 lbs.	\$1,350
FPM12-0406-Z	48" x 72"	96 lbs.	\$1,500
FPM12-0408-Z	48" x 96"	128 lbs.	\$1,850
FPM12-0504-Z	60" x 48"	80 lbs.	\$1,350
FPM12-0506-Z	60" x 72"	120 lbs.	\$1,725
FPM12-0508-Z	60" x 96"	160 lbs.	\$2,250

Freight Class 70

3/4" Profile Bevel with Invisi-Mount

Number	Size (HxW)	Weight	Price
FPM-BV-0203-Z	24" x 36"	27 lbs.	\$900
FPM-BV-0304-Z	36" x 48"	54 lbs.	\$1,200
FPM-BV-0403-Z	48" x 36"	54 lbs.	\$1,200
FPM-BV-0404-Z	48" x 48"	72 lbs.	\$1,450
FPM-BV-0405-Z	48" x 60"	96 lbs.	\$1,716
FPM-BV-0406-Z	48" x 72"	108 lbs.	\$1,920
FPM-BV-0408-Z	48" x 96"	144 lbs.	\$2,400

Freight Class 70

Cursive Board

The Cursive Board flows seamlessly from a tack to a writing surface or vice-versa. With stylish rounded corners, the writing surface is available in 6 standard LCS Porcelain colors or 10 standard Calyx Glass colors. Tack surface is available in 5 standard and 19 additional Calyx Acoustic colors, and 20 standard Maharam fabric colors.



Writing Surfaces

LCS Porcelain

Number	Size (HxW)	Weight	Price
CU-3648-LCS	36" x 48"	48 lbs.	\$961
CU-4848-LCS	48" x 48"	64 lbs.	\$1,100
CU-4860-LCS	48" x 60"	80 lbs.	\$1,200
CU-4872-LCS	48" x 72"	96 lbs.	\$1,367

Calyx Glass

Number	Size (HxW)	Weight	Price
CU-3648-G	36" x 48"	96 lbs.	\$1,367
CU-4848-G	48" x 48"	128 lbs.	\$1,609
CU-4860-G	48" x 60"	160 lbs.	\$2,000
CU-4872-G	48" x 72"	192 lbs.	\$2,280

Tack Surfaces

Calyx Acoustic

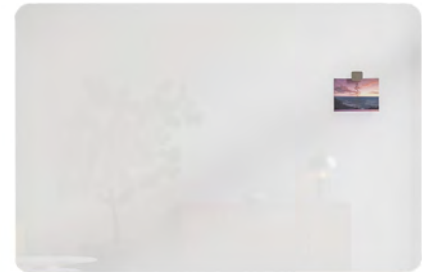
Number	Size (HxW)	Weight	Price
CU-3612-AC	36" x 12"	9 lbs.	\$280
CU-3624-AC	36" x 24"	18 lbs.	\$450
CU-4812-AC	48" x 12"	12 lbs.	\$320
CU-4824-AC	48" x 24"	24 lbs.	\$580

Fabric Wrapped

Number	Size (HxW)	Weight	Price
CU-3612-TB	36" x 12"	9 lbs.	\$289
CU-3624-TB	36" x 24"	18 lbs.	\$420
CU-4812-TB	48" x 12"	12 lbs.	\$333
CU-4824-TB	48" x 24"	24 lbs.	\$495

Cursive:One Board

The Cursive:One Board makes a stunning statement in a single writing or tack surface. With stylish rounded corners, the writing surface is available in LCS Porcelain colors and Calyx Glass colors. Tack surface is available in Calyx Acoustic, and fabric in Maharam, Guilford, and Carnegie.



Writing Surfaces

LCS Porcelain

Number	Size (HxW)	Weight	Price
CU-2436-LCS-ONE	24" x 36"	24 lbs.	\$749
CU-3648-LCS-ONE	36" x 48"	48 lbs.	\$1,048
CU-4848-LCS-ONE	48" x 48"	64 lbs.	\$1,128
CU-4860-LCS-ONE	48" x 60"	80 lbs.	\$1,308
CU-4872-LCS-ONE	48" x 72"	96 lbs.	\$1,407
CU-4896-LCS-ONE	48" x 96"	128 lbs.	\$1,750

Calyx Glass

Number	Size (HxW)	Weight	Price
CU-2436-G-ONE	24" x 36"	48 lbs.	\$960
CU-3648-G-ONE	36" x 48"	96 lbs.	\$1,340
CU-4848-G-ONE	48" x 48"	128 lbs.	\$1,730
CU-4860-G-ONE	48" x 60"	160 lbs.	\$2,150
CU-4872-G-ONE	48" x 72"	195 lbs.	\$2,350
CU-4896-G-ONE	48" x 96"	256 lbs.	\$2,920

Tack Surfaces

Calyx Acoustic

Number	Size (HxW)	Weight	Price
CU-2436-AC-ONE	24" x 36"	18 lbs.	\$739
CU-3648-AC-ONE	36" x 48"	36 lbs.	\$958
CU-4848-AC-ONE	48" x 48"	48 lbs.	\$1,118
CU-4860-AC-ONE	48" x 60"	60 lbs.	\$1,288
CU-4872-AC-ONE	48" x 72"	72 lbs.	\$1,457
CU-4896-AC-ONE	48" x 96"	96 lbs.	\$1,688

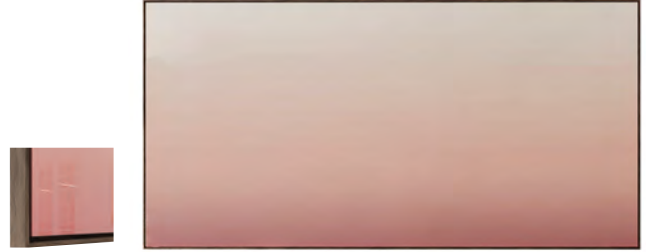
Fabric Wrapped

Number	Size (HxW)	Weight	Price
CU-2436-TB-ONE	24" x 36"	18 lbs.	\$799
CU-3648-TB-ONE	36" x 48"	36 lbs.	\$1,048
CU-4848-TB-ONE	48" x 48"	48 lbs.	\$1,208
CU-4860-TB-ONE	48" x 60"	60 lbs.	\$1,388
CU-4872-TB-ONE	48" x 72"	72 lbs.	\$1,548
CU-4896-TB-ONE	48" x 96"	96 lbs.	\$1,847

LCS Porcelain, Calyx Acoustic, and fabric wrapped boards are 1/2" smaller, and Calyx Glass is 1/4" smaller on all standard sizes.

Ravina Board

The Ravina wall-mounted board comes with a stylish 5/16" reveal gap between the trim and the perimeter of the board. The writing surface is available in LCS Porcelain colors and Calyx Glass colors. The trim is available in wood, chrome, or satin anodized aluminum trim. Tack surface is available with fabrics in Maharam, Guilford, and Carnegie.



Aluminum Trim

LCS Porcelain

Number	Size (HxW)	Weight	Price
RV-A-2436-LCS	25" x 37"	24 lbs.	\$699
RV-A-3648-LCS	37" x 49"	48 lbs.	\$978
RV-A-4848-LCS	49" x 49"	64 lbs.	\$1,078
RV-A-4860-LCS	49" x 61"	80 lbs.	\$1,118
RV-A-4872-LCS	49" x 73"	96 lbs.	\$1,338
RV-A-4896-LCS	49" x 97"	128 lbs.	\$1,650

Calyx Glass

Number	Size (HxW)	Weight	Price
RV-A-2436-MG	25" x 37"	48 lbs.	\$900
RV-A-3648-MG	37" x 49"	96 lbs.	\$1,390
RV-A-4848-MG	49" x 49"	128 lbs.	\$1,720
RV-A-4860-MG	49" x 61"	160 lbs.	\$2,150
RV-A-4872-MG	49" x 73"	195 lbs.	\$2,460
RV-A-4896-MG	49" x 97"	256 lbs.	\$3,100

Fabric Wrapped

Number	Size (HxW)	Weight	Price
RV-A-2436-TB	25" x 37"	15 lbs.	\$669
RV-A-3648-TB	37" x 49"	30 lbs.	\$908
RV-A-4848-TB	49" x 49"	40 lbs.	\$1,048
RV-A-4860-TB	49" x 61"	50 lbs.	\$1,218
RV-A-4872-TB	49" x 73"	60 lbs.	\$1,368
RV-A-4896-TB	49" x 97"	80 lbs.	\$1,700

Wood Trim

LCS Porcelain

Number	Size (HxW)	Weight	Price
RV-W-2436-LCS	25" x 37"	24 lbs.	\$844
RV-W-3648-LCS	37" x 49"	48 lbs.	\$1,108
RV-W-4848-LCS	49" x 49"	64 lbs.	\$1,218
RV-W-4860-LCS	49" x 61"	80 lbs.	\$1,418
RV-W-4872-LCS	49" x 73"	96 lbs.	\$1,527
RV-W-4896-LCS	49" x 97"	128 lbs.	\$1,862

Calyx Glass

Number	Size (HxW)	Weight	Price
RV-W-2436-MG	25" x 37"	48 lbs.	\$1,110
RV-W-3648-MG	37" x 49"	96 lbs.	\$1,510
RV-W-4848-MG	49" x 49"	128 lbs.	\$1,880
RV-W-4860-MG	49" x 61"	160 lbs.	\$2,350
RV-W-4872-MG	49" x 73"	195 lbs.	\$2,770
RV-W-4896-MG	49" x 97"	256 lbs.	\$3,400

Fabric Wrapped

Number	Size (HxW)	Weight	Price
RV-W-2436-TB	25" x 37"	15 lbs.	\$769
RV-W-3648-TB	37" x 49"	30 lbs.	\$1,058
RV-W-4848-TB	49" x 49"	40 lbs.	\$1,178
RV-W-4860-TB	49" x 61"	50 lbs.	\$1,438
RV-W-4872-TB	49" x 73"	60 lbs.	\$1,568
RV-W-4896-TB	49" x 97"	80 lbs.	\$1,937

MIX Wall-Mounted Markerboards

MIX Contemporary Wall-Mounted Markerboard

MIX Contemporary Markerboards are companions to the Contemporary Mobiles. See page 27 for wood frame stains options.



LCS Porcelain Markerboard

Number	Size (HxW)	Weight	Price
MXC-WM-3648-MB	36" x 48"	60 lbs.	\$2,282
MXC-WM-3660-MB	36" x 60"	75 lbs.	\$2,693
MXC-WM-4836-MB	48" x 36"	60 lbs.	\$2,230
MXC-WM-4848-MB	48" x 48"	80 lbs.	\$2,480
MXC-WM-4872-MB	48" x 72"	100 lbs.	\$3,045
MXC-WM-4896-MB	48" x 96"	120 lbs.	\$3,749

Calyx Glass Markerboard

Number	Size (HxW)	Weight	Price
MXC-WM-3648-MG	36" x 48"	84 lbs.	\$3,145
MXC-WM-3660-MG	36" x 60"	105 lbs.	\$3,853
MXC-WM-4836-MG	48" x 36"	84 lbs.	\$2,996
MXC-WM-4848-MG	48" x 48"	112 lbs.	\$3,430
MXC-WM-4872-MG	48" x 72"	140 lbs.	\$4,668
MXC-WM-4896-MG	48" x 96"	168 lbs.	\$5,548

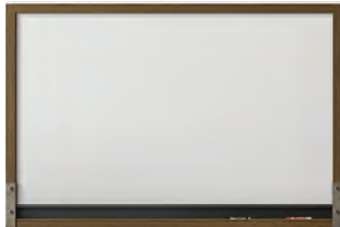
Calyx Cork Tackboard

Number	Size (HxW)	Weight	Price
MXC-WM-3648-CC	36" x 48"	84 lbs.	\$2,312
MXC-WM-3660-CC	36" x 60"	105 lbs.	\$2,802
MXC-WM-4836-CC	48" x 36"	84 lbs.	\$2,262
MXC-WM-4848-CC	48" x 48"	112 lbs.	\$2,549
MXC-WM-4872-CC	48" x 72"	140 lbs.	\$3,193
MXC-WM-4896-CC	48" x 96"	168 lbs.	\$3,976

All Freight Class 70

MIX Industrial Wall-Mounted Markerboard

MIX Industrial Markerboards are companions to the Industrial Mobiles with matching metal corner accents with exposed hex bolts in matte clear finish. See page 27 for wood frame stains options.



LCS Porcelain Markerboard

Number	Size (HxW)	Weight	Price
MXI-WM-3648-MB	36" x 48"	60 lbs.	\$2,528
MXI-WM-3660-MB	36" x 60"	75 lbs.	\$2,939
MXI-WM-4836-MB	48" x 36"	60 lbs.	\$2,475
MXI-WM-4848-MB	48" x 48"	80 lbs.	\$2,726
MXI-WM-4872-MB	48" x 72"	100 lbs.	\$3,291
MXI-WM-4896-MB	48" x 96"	120 lbs.	\$3,996

Calyx Glass Markerboard

Number	Size (HxW)	Weight	Price
MXI-WM-3648-MG	36" x 48"	84 lbs.	\$3,400
MXI-WM-3660-MG	36" x 60"	105 lbs.	\$4,108
MXI-WM-4836-MG	48" x 36"	84 lbs.	\$3,251
MXI-WM-4848-MG	48" x 48"	112 lbs.	\$3,686
MXI-WM-4872-MG	48" x 72"	140 lbs.	\$4,923
MXI-WM-4896-MG	48" x 96"	168 lbs.	\$5,803

Calyx Cork Tackboard

Number	Size (HxW)	Weight	Price
MXI-WM-3648-CC	36" x 48"	84 lbs.	\$2,557
MXI-WM-3660-CC	36" x 60"	105 lbs.	\$3,047
MXI-WM-4836-CC	48" x 36"	84 lbs.	\$2,507
MXI-WM-4848-CC	48" x 48"	112 lbs.	\$2,796
MXI-WM-4872-CC	48" x 72"	140 lbs.	\$3,438
MXI-WM-4896-CC	48" x 96"	168 lbs.	\$4,221

All Freight Class 70

Aluminum Framed Boards

Concept - Aluminum Frame Board

Concept features a narrow face aluminum trim - 5/16" wide, with an eased edge. Aluminum is 1/8" thick adding depth to the trim perimeter. Markerboards are LCS Porcelain enamel steel; tackboards can be Calyx Cork, or Guilford, Carnegie and Maharam fabrics.



LCS Porcelain Markerboard

Number	Size (HxW)	Weight	Price
CP-0203-MB	24" x 36"	24 lbs.	\$285
CP-0304-MB	36" x 48"	42 lbs.	\$450
CP-0404-MB	48" x 48"	56 lbs.	\$560
CP-0405-MB	48" x 60"	70 lbs.	\$700
CP-0406-MB	48" x 72"	84 lbs.	\$772
CP-0408-MB	48" x 96"	112 lbs.	\$910
CP-0410-MB	48" x 120"	140 lbs.	\$1,188
CP-0412-MB	48" x 144"	168 lbs.	\$1,425
CP-0506-MB	60" x 72"	105 lbs.	\$1,100
CP-0508-MB	60" x 96"	140 lbs.	\$1,187
CP-0510-MB	60" x 120"	200 lbs.	\$1,700
CP-0512-MB	60" x 144"	240 lbs.	\$2,300

*If in 2 pieces, must use adhesive

Calyx Cork Tackboard

Number	Size (HxW)	Weight	Price
CP-0203-COR	24" x 36"	18 lbs.	\$250
CP-0304-COR	36" x 48"	36 lbs.	\$410
CP-0404-COR	48" x 48"	48 lbs.	\$505
CP-0405-COR	48" x 60"	60 lbs.	\$625
CP-0406-COR	48" x 72"	72 lbs.	\$741
CP-0408-COR	48" x 96"	96 lbs.	\$937

Fabric Tackboards

Number	Size (HxW)	Price Weight	Price Guilford -FG	Price Carnegie -FC	Maharam -FM
CP-0203-	24" x 36"	12 lbs.	\$250	\$299	\$320
CP-0304-	36" x 48"	24 lbs.	\$400	\$566	\$579
CP-0404-	48" x 48"	32 lbs.	\$475	\$709	\$715
CP-0406-	48" x 72"	48 lbs.	\$698	\$900	\$950
CP-0408-	48" x 96"	64 lbs.	\$876	\$1,180	\$1,245

For Guilford fabrics, specify -FG; for Carnegie, -FC; and for Maharam, -FM. Be sure to specify color required.

All Freight Class 70

Wood Framed Boards

Motif - Wood Frame Board

Motif Markerboards and Tackboards have a rounded edge profile - 1" deep with a narrow face trim. Frames available in Maple, Mahogany, Cherry, Walnut, Espresso and Ebony. Custom finishes are optional. Markerboards are LCS Porcelain enamel steel; tackboards can be Calyx Cork, or Guilford, Carnegie and Maharam fabrics.



LCS Porcelain Markerboard

Number	Size (HxW)	Weight	Price
MO-0203-MB	24" x 36"	21 lbs.	\$364
MO-0304-MB	36" x 48"	42 lbs.	\$566
MO-0404-MB	48" x 48"	56 lbs.	\$750
MO-0406-MB	48" x 72"	84 lbs.	\$1,003
MO-0408-MB	48" x 96"	112 lbs.	\$1,240

Calyx Cork Tackboard

Number	Size (HxW)	Weight	Price
MO-0203-COR	24" x 36"	20 lbs.	\$352
MO-0304-COR	36" x 48"	39 lbs.	\$588
MO-0404-COR	48" x 48"	52 lbs.	\$719
MO-0406-COR	48" x 72"	78 lbs.	\$994
MO-0408-COR	48" x 96"	104 lbs.	\$1,285

Fabric Tackboards

Number	Size (HxW)	Price Weight	Price Guilford -FG	Price Carnegie -FC	Maharam -FM
MO-0203-	24" x 36"	14 lbs.	\$344	\$427	\$388
MO-0304-	36" x 48"	27 lbs.	\$571	\$775	\$684
MO-0404-	48" x 48"	36 lbs.	\$683	\$967	\$842
MO-0406-	48" x 72"	54 lbs.	\$977	\$1,369	\$1,184
MO-0408-	48" x 96"	72 lbs.	\$1,234	\$1,785	\$1,478

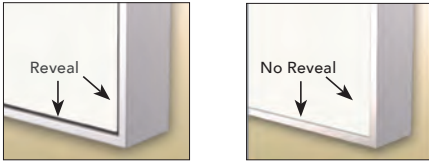
For Guilford fabrics, specify -FG; for Carnegie, -FC; and for Maharam, -FM. Be sure to specify color required.

All Freight Class 70

Modular Markerboards and Tackboards

Connect X2 Modular Communication System

Connect X2 modular markerboards and tackboards have a thin low-profile aluminum frame. Select from: Markerboards in LCS Porcelain enamel steel or Calyx Glass; Tackboards in Calyx Cork or Carnegie, Guilford and Maharam fabrics. Can be installed individually or in groupings.



LCS Porcelain Markerboard

Number	Size (HxW)	Weight	Price	
			Reveal	No-Reveal
MCS-1824-MB	18" x 24"	12 lbs.	\$500	\$307
MCS-2436-MB	24" x 36"	24 lbs.	\$700	\$400
MCS-3648-MB	36" x 48"	48 lbs.	\$1,024	\$592
MCS-4848-MB	48" x 48"	64 lbs.	\$1,250	\$720
MCS-4872-MB	48" x 72"	96 lbs.	\$1,700	\$992
MCS-4896-MB	48" x 96"	128 lbs.	\$2,150	\$1,324

For Reveal trim, specify CL-MCS; No-Reveal trim, X2-MCS

Calyx Glass Markerboard

Number	Size (HxW)	Weight	Price	
			Reveal	No-Reveal
MCS-2436-MG	24" x 36"	48 lbs.	\$961	\$868
MCS-3648-MG	36" x 48"	96 lbs.	\$1,450	\$1,330
MCS-4848-MG	48" x 48"	128 lbs.	\$1,699	\$1,500
MCS-4872-MG	48" x 72"	195 lbs.	\$2,450	\$2,250
MCS-4896-MG	48" x 96"	256 lbs.	\$3,170	\$2,950

For Reveal trim, specify CL-MCS; No-Reveal trim, X2-MCS



Sample configurations

Calyx Cork Tackboard

Number	Size (HxW)	Weight	Price	
			Reveal	No-Reveal
MCS-1824-CO	18" x 24"	11 lbs.	\$347	\$325
MCS-2436-CO	24" x 36"	21 lbs.	\$475	\$420
MCS-3648-CO	36" x 48"	42 lbs.	\$643	\$590
MCS-4848-CO	48" x 48"	56 lbs.	\$782	\$700
MCS-4872-CO	48" x 72"	84 lbs.	\$1,100	\$900
MCS-4896-CO	48" x 96"	112 lbs.	\$1,390	\$1,170

For Reveal trim, specify CL-MCS; No-Reveal trim, X2-MCS

Fabric Tackboard - With Reveal

Number	Size (HxW)	Weight	Price		
			Guilford -FG	Carnegie -FC	Maharam -FM
CL-MCS-1824-	18" x 24"	8 lbs.	\$355	\$424	\$375
CL-MCS-2436-	24" x 36"	15 lbs.	\$399	\$500	\$452
CL-MCS-3648-	36" x 48"	30 lbs.	\$620	\$852	\$705
CL-MCS-4848-	48" x 48"	40 lbs.	\$722	\$1,030	\$901
CL-MCS-4872-	48" x 72"	60 lbs.	\$1,067	\$1,400	\$1,416
CL-MCS-4896-	48" x 96"	80 lbs.	\$1,244	\$1,550	\$1,601

Fabric Tackboard - No Reveal

Number	Size (HxW)	Weight	Price		
			Guilford -FG	Carnegie -FC	Maharam -FM
X2-MCS-1824-	18" x 24"	8 lbs.	\$390	\$410	\$369
X2-MCS-2436-	24" x 36"	15 lbs.	\$400	\$500	\$455
X2-MCS-3648-	36" x 48"	30 lbs.	\$619	\$805	\$699
X2-MCS-4848-	48" x 48"	40 lbs.	\$743	\$968	\$815
X2-MCS-4872-	48" x 72"	60 lbs.	\$900	\$1,258	\$1,180
X2-MCS-4896-	48" x 96"	80 lbs.	\$1,150	\$1,642	\$1,498

For Guilford fabrics, specify -FG; for Carnegie, -FC; and for Maharam, -FM.

See fabric options on page 26. Be sure to specify color required.

All on this page Freight Class 70

Evolve Markerboards and Tackboards

Evolve Markerboard

Evolve Markerboards feature a smooth, low gloss LCS Porcelain surface and a unique high/low profile aluminum trim. Wide face trim at top and bottom is 2-3/8"; narrow trim at sides is 5/16". Snap-in accessory tray is designed with a lip to hold accessories; tray is 2" wide.

LCS Porcelain Markerboard

Number	Size (HxW)	Weight	Price
EV-0203-MB	24" x 36"	21 lbs.	\$327
EV-0304-MB	36" x 48"	42 lbs.	\$572
EV-0404-MB	48" x 48"	56 lbs.	\$736
EV-0405-MB	48" x 60"	70 lbs.	\$895
EV-0406-MB	48" x 72"	84 lbs.	\$965
EV-0408-MB	48" x 96"	112 lbs.	\$1,250
EV-0410-MB	48" x 120"	140 lbs.	\$1,550
EV-0412-MB	48" x 144"	168 lbs.	\$1,800

Freight Class 70



Evolve Tackboard

Evolve Tackboards feature the same contrasting high/low profile aluminum trim as Evolve markerboards – 2-3/8" wide at top and bottom, 5/16" wide on the sides. Tack surface available in Calyx Cork, or standard Carnegie, Guilford and Maharam fabrics. See page 26 for material options.

Tackboard

Number	Size (HxW)	Weight	Price
EV-0404-TB	48" x 48"	48 lbs.	\$822
EV-0406-TB	48" x 72"	72 lbs.	\$1,075
EV-0408-TB	48" x 96"	96 lbs.	\$1,360
EV-0504-TB	60" x 48"	60 lbs.	\$950
EV-0604-TB	72" x 48"	72 lbs.	\$1,075

Freight Class 70



Evolve Sliding System

Evolve Markerboards and Tackboards are on the move! Evolve sliders combine Evolve sliding panels with the same high/low profile 2-3/8" wide face trim at top and bottom and 5/16" narrow face trim at the sides with an affixed Evolve Markerboard. Rollers and brackets included for mounting on Evolve Markerboards or Tackboards. Use on 48" height Evolve fixed boards.

Evolve Sliding Panels

Number	Size (HxW)	Weight	Price
EVS-0403-MB	48" x 36"	42 lbs.	\$902
EVS-0404-MB	48" x 48"	56 lbs.	\$941

Freight Class 70



Trak-It System

Trak-it Panel

Double-sided panels are easy to re-arrange. Available in two sizes - 24" x 36" and 36" x 48" - with your choice of LCS Porcelain enamel steel markerboard, Calyx Cork tackboard or standard Guilford, Carnegie and Maharam fabrics - any combination. Specify type(s) of material and color(s). Panels hang portrait or landscape from optional Trak-It Rail sold in standard 10 ft. lengths. Rail not included in board price.



Tackboard 2 sides

Number	Size (HxW)	Weight	Price
TI-2436-TB-TB	24" x 36"	14 lbs.	\$496
TI-3648-TB-TB	36" x 48"	27 lbs.	\$868

Freight Class 70

Trak-It aluminum rail in 10' lengths

Number	Size	Weight	Price
TI-RAIL-10	10 lin. ft.	5 lbs.	\$175

Freight Class 70

LCS 2 sides		LCS/Tackboard		
Number	Number	Size (HxW)	Weight	Price
TI-2436-MB-MB	TI-2436-MB-TB	24" x 36"	14 lbs.	\$443
TI-3648-MB-MB	TI-3648-MB-TB	36" x 48"	27 lbs.	\$736

Freight Class 70

For optional Trak-it tray, specify 264M1-CA and add \$59.

Xchange Graphic Boards

Xchange Graphic Board

Glass markerboard includes an interchangeable graphic insert that slides easily behind clear 1/4" low-iron tempered glass writing surface. Low profile aluminum frame available in black or white powder coat finish. Available in three sizes: 18" x 24", 24" x 36", and 36" x 48".



Xchange Graphic Board

Black Frame		White Frame		
Number	Number	Size (HxW)	Weight	Price
XC1824B	XC1824W	18" x 24"	15 lbs.	\$1,035
XC2436B	XC2436W	24" x 36"	30 lbs.	\$1,689
XC3648B	XC3648W	36" x 48"	60 lbs.	\$2,966

Freight Class 70

Additional Xchange Graphic Insert

Number	Size (HxW)	Weight	Price
XCG1824	18" x 24"	1 lb.	\$679
XCG2436	24" x 36"	2 lbs.	\$1,129
XCG3648	36" x 48"	4 lbs.	\$2,042

Freight Class 70

Sliding Board Systems

Horizontal Sliding Board Systems

Horizontal Sliding Units are custom-built to meet your needs, providing optimum display surfaces within easy reach for teaching, conferences, and training. The sliding panels and back panels can be LCS Porcelain dry erase markerboard or LCS Porcelain Chalkboard writing surfaces. Also, Calyx Cork, Guilford, Carnegie, and Maharam fabric tackboard surfaces, along with projection screen, or COM fabrics can be applied to any of these panels. Call 800-434-4610 for custom pricing.



Switch Markerboards

Switch Wall-Mounted Markerboard

The slim trim elements give the board a minimalistic quality with an integrated marker tray along the bottom edge of the boards. Writing surfaces available in LCS Porcelain - 6 standard colors or Calyx Glass - 10 standard colors. Frame and Marker tray comes in 10 standard colors in matte finish - see page 24. Optional acoustic and fabric wrapped TacPads available - see pages 26 and 27 for colors.



LCS Porcelain

Number	Size (HxW)	Weight	Price
SW-WM-3648-MB	36" x 48"	48 lbs.	\$825
SW-WM-3660-MB	36" x 60"	53 lbs.	\$1,021
SW-WM-3672-MB	36" x 72"	63 lbs.	\$1,073
SW-WM-3696-MB	36" x 96"	84 lbs.	\$1,329
SW-WM-4848-MB	48" x 48"	56 lbs.	\$850
SW-WM-4860-MB	48" x 60"	70 lbs.	\$1,062
SW-WM-4872-MB	48" x 72"	84 lbs.	\$1,073
SW-WM-4896-MB	48" x 96"	112 lbs.	\$1,329

Calyx Glass

Number	Size (HxW)	Weight	Price
SW-WM-3648-MG	36" x 48"	72 lbs.	\$1,826
SW-WM-3660-MG	36" x 60"	90 lbs.	\$2,601
SW-WM-3672-MG	36" x 72"	108 lbs.	\$2,889
SW-WM-3696-MG	36" x 96"	144 lbs.	\$3,582
SW-WM-4848-MG	48" x 48"	96 lbs.	\$2,057
SW-WM-4860-MG	48" x 60"	120 lbs.	\$2,889
SW-WM-4872-MG	48" x 72"	144 lbs.	\$3,120
SW-WM-4896-MG	48" x 96"	192 lbs.	\$3,183

All Freight Class 70

Calyx Acoustic TacPads

Number	Size (HxW)	Weight	Price
GS-TP-1409	14" x 9"	.5 lb.	\$208
GS-TP-2714	27" x 14"	1.5 lbs.	\$279

Calyx Fabric Wrapped TacPads

Number	Size (HxW)	Weight	Price
GS-TP-1409-EW	14" x 9"	1 lb.	\$207
GS-TP-2714-EW	27" x 14"	3 lbs.	\$277

Venue Markerboards

Venue Wall-Mounted Markerboard

The stylish frame and distinctive angled marker tray available in 8 matte finishes. Available in 8 standard sizes, custom sizes available. Writing surfaces available in LCS Porcelain - 6 standard colors or Calyx Glass - 10 standard colors. Frame and Marker tray comes in 10 standard colors in matte finish - see page 24. Optional acoustic and fabric wrapped TacPads available.



LCS Porcelain

Number	Size (HxW)	Weight	Price
VN-WM-3648-MB	36" x 48"	42 lbs.	\$688
VN-WM-3660-MB	36" x 60"	53 lbs.	\$850
VN-WM-3672-MB	36" x 72"	63 lbs.	\$1,012
VN-WM-3696-MB	36" x 96"	84 lbs.	\$1,221
VN-WM-4848-MB	48" x 48"	56 lbs.	\$850
VN-WM-4860-MB	48" x 60"	70 lbs.	\$950
VN-WM-4872-MB	48" x 72"	84 lbs.	\$1,065
VN-WM-4896-MB	48" x 96"	112 lbs.	\$1,236

Calyx Glass

Number	Size (HxW)	Weight	Price
VN-WM-3648-MG	36" x 48"	72 lbs.	\$1,200
VN-WM-3660-MG	36" x 60"	90 lbs.	\$1,687
VN-WM-3672-MG	36" x 72"	108 lbs.	\$2,025
VN-WM-3696-MG	36" x 96"	144 lbs.	\$2,640
VN-WM-4848-MG	48" x 48"	96 lbs.	\$1,600
VN-WM-4860-MG	48" x 60"	120 lbs.	\$2,000
VN-WM-4872-MG	48" x 72"	144 lbs.	\$2,400
VN-WM-4896-MG	48" x 96"	192 lbs.	\$2,960

All Freight Class 70

MIX Contemporary Mobile

In Calyx's MIX line of highly customizable, mixed-material mobile markerboards, you can customize nearly every markerboard component – from colors, finishes and writing surfaces to metal trays, bases and accent strips – resulting in a virtually unlimited palette that transforms your design concept into creation. MIX mobiles come in full and partial height with option to add a metal shelf to match the base on partial height mobiles. See page 27 for wood frame stain options.



Contemporary Mobile - Full Height LCS Porcelain 2 Sides

Number	Size (HxW)	Weight	Price
MXC-6036-MB-MB	72" x 36"	152 lbs.	\$3,630
MXC-6042-MB-MB	72" x 42"	164 lbs.	\$3,690
MXC-6048-MB-MB	72" x 48"	178 lbs.	\$3,740
MXC-6060-MB-MB	72" x 60"	206 lbs.	\$4,110

Contemporary Mobile - Full Height Calyx Glass 2 Sides

Number	Size (HxW)	Weight	Price
MXC-6036-MG-MG	72" x 36"	228 lbs.	\$5,417
MXC-6042-MG-MG	72" x 42"	256 lbs.	\$5,625
MXC-6048-MG-MG	72" x 48"	283 lbs.	\$5,823

Contemporary Mobile - Full Height LCS Porcelain and Calyx Cork

Number	Size (HxW)	Weight	Price
MXC-6036-MB-CC	72" x 36"	157 lbs.	\$4,000
MXC-6042-MB-CC	72" x 42"	173 lbs.	\$4,060
MXC-6048-MB-CC	72" x 48"	188 lbs.	\$4,080

Contemporary Mobile - Full Height Calyx Glass and Calyx Cork

Number	Size (HxW)	Weight	Price
MXC-6036-MG-CC	72" x 36"	189 lbs.	\$4,847
MXC-6042-MG-CC	72" x 42"	222 lbs.	\$4,981
MXC-6048-MG-CC	72" x 48"	244 lbs.	\$5,106

ADD Biophilic Panel - Serenity or Om 1 Side

Number	Size (HxW)	Weight	Price
MXC-6042-BP-MB	72" x 42"	TBD	CALL
MXC-6042-BP-MG	72" x 42"	TBD	CALL
MXC-6042-BP-CC	72" x 42"	TBD	CALL

Contemporary Mobile - Partial Height LCS Porcelain 2 Sides

Number	Size (HxW)	Weight	Price	Add Shelf
MXC-4836-MB-MB	72" x 36"	132 lbs.	\$3,320	\$324
MXC-4848-MB-MB	72" x 48"	155 lbs.	\$3,550	\$398
MXC-4860-MB-MB	72" x 60"	178 lbs.	\$3,840	\$443
MXC-4872-MB-MB	72" x 72"	201 lbs.	\$4,090	\$497

Contemporary Mobile - Partial Height Calyx Glass 2 Sides

Number	Size (HxW)	Weight	Price	Add Shelf
MXC-4836-MG-MG	72" x 36"	195 lbs.	\$4,848	\$324
MXC-4848-MG-MG	72" x 48"	239 lbs.	\$5,208	\$398
MXC-4860-MG-MG	72" x 60"	283 lbs.	\$5,823	\$443

Contemporary Mobile - Partial Height LCS Porcelain and Calyx Cork

Number	Size (HxW)	Weight	Price	Add Shelf
MXC-4836-MB-CC	72" x 36"	138 lbs.	\$3,540	\$324
MXC-4848-MB-CC	72" x 48"	163 lbs.	\$3,850	\$398
MXC-4860-MB-CC	72" x 60"	188 lbs.	\$4,210	\$443
MXC-4872-MB-CC	72" x 72"	214 lbs.	\$4,530	\$497

Contemporary Mobile - Partial Height Calyx Glass and Calyx Cork

Number	Size (HxW)	Weight	Price	Add Shelf
MXC-4836-MG-CC	72" x 36"	152 lbs.	\$4,204	\$324
MXC-4848-MG-CC	72" x 48"	196 lbs.	\$4,649	\$398
MXC-4860-MG-CC	72" x 60"	240 lbs.	\$5,195	\$443

All Freight Class 85

MIX Industrial Mobile

MIX Industrial Mobiles feature functional exposed hex bolts and patinaed metal frames. The metal base is finished with a clear powder coating that retains the industrial flair and protects against rust and scratches. MIX mobiles come in full and partial height with option to add a metal shelf to match the base on partial height mobiles. Industrial casters come with exposed brake locks. See page 27 for wood frame stains options.



Industrial Mobile - Full Height LCS Porcelain 2 Sides

Number	Size (HxW)	Weight	Price
MXI-6036-MB-MB	72" x 36"	152 lbs.	\$3,831
MXI-6042-MB-MB	72" x 42"	164 lbs.	\$3,896
MXI-6048-MB-MB	72" x 48"	178 lbs.	\$3,946
MXI-6060-MB-MB	72" x 60"	206 lbs.	\$4,279

Industrial Mobile - Full Height Calyx Glass 2 Sides

Number	Size (HxW)	Weight	Price
MXI-6036-MG-MG	72" x 36"	228 lbs.	\$5,472
MXI-6042-MG-MG	72" x 42"	256 lbs.	\$5,678
MXI-6048-MG-MG	72" x 48"	283 lbs.	\$5,877

Industrial Mobile - Full Height LCS Porcelain and Calyx Cork

Number	Size (HxW)	Weight	Price
MXI-6036-MB-CC	72" x 36"	157 lbs.	\$4,168
MXI-6042-MB-CC	72" x 42"	173 lbs.	\$4,245
MXI-6048-MB-CC	72" x 48"	188 lbs.	\$4,245

Industrial Mobile - Full Height Calyx Glass and Calyx Cork

Number	Size (HxW)	Weight	Price
MXI-6036-MG-CC	72" x 36"	189 lbs.	\$4,899
MXI-6042-MG-CC	72" x 42"	222 lbs.	\$5,035
MXI-6048-MG-CC	72" x 48"	244 lbs.	\$5,160

ADD Biophilic Panel - Serenity or Om 1 Side

Number	Size (HxW)	Weight	Price
MXI-6042-BP-MB	72" x 42"	TBD	CALL
MXI-6042-BP-MG	72" x 42"	TBD	CALL
MXI-6042-BP-CC	72" x 42"	TBD	CALL

Industrial Mobile - Partial Height LCS Porcelain 2 Sides

Number	Size (HxW)	Weight	Price	Add Shelf
MXI-4836-MB-MB	72" x 36"	132 lbs.	\$3,718	\$324
MXI-4848-MB-MB	72" x 48"	155 lbs.	\$3,964	\$398
MXI-4860-MB-MB	72" x 60"	178 lbs.	\$4,263	\$443
MXI-4872-MB-MB	72" x 72"	201 lbs.	\$4,526	\$497

Industrial Mobile - Partial Height Calyx Glass 2 Sides

Number	Size (HxW)	Weight	Price	Add Shelf
MXI-4836-MG-MG	72" x 36"	195 lbs.	\$4,932	\$324
MXI-4848-MG-MG	72" x 48"	239 lbs.	\$5,478	\$398
MXI-4860-MG-MG	72" x 60"	283 lbs.	\$6,170	\$443

Industrial Mobile - Partial Height LCS Porcelain and Calyx Cork

Number	Size (HxW)	Weight	Price	Add Shelf
MXI-4836-MB-CC	72" x 36"	138 lbs.	\$3,899	\$324
MXI-4848-MB-CC	72" x 48"	163 lbs.	\$4,213	\$398
MXI-4860-MB-CC	72" x 60"	188 lbs.	\$4,527	\$443
MXI-4872-MB-CC	72" x 72"	214 lbs.	\$4,843	\$497

Industrial Mobile - Partial Height Calyx Glass and Calyx Cork

Number	Size (HxW)	Weight	Price	Add Shelf
MXI-4836-MG-CC	72" x 36"	152 lbs.	\$4,473	\$324
MXI-4848-MG-CC	72" x 48"	196 lbs.	\$4,919	\$398
MXI-4860-MG-CC	72" x 60"	240 lbs.	\$5,465	\$443

All Freight Class 85

Switch Mobile

Switch double-sided mobiles are available in your choice of LCS Porcelain enamel steel or Calyx Glass writing surfaces with an integrated marker tray along the bottom edge of the board. 60" or 72" height and widths in 36", 42", 48", and 60". Comes with 2 locking and 2 non-locking Hubless Casters for easy mobility. Standard matte color options on page 24. Optional tackable surfaces available.



LCS Porcelain

Number	Size (HxW)	Weight	Price
SW-6036-MB-MB	60" x 36"	86 lbs.	\$2,642
SW-6042-MB-MB	60" x 42"	95 lbs.	\$2,746
SW-6048-MB-MB	60" x 48"	103 lbs.	\$2,756
SW-6060-MB-MB	60" x 60"	109 lbs.	\$2,985
SW-7236-MB-MB	72" x 36"	92 lbs.	\$2,870
SW-7242-MB-MB	72" x 42"	102 lbs.	\$2,891
SW-7248-MB-MB	72" x 48"	111 lbs.	\$2,912
SW-7260-MB-MB	72" x 60"	119 lbs.	\$3,110

Freight Class 85

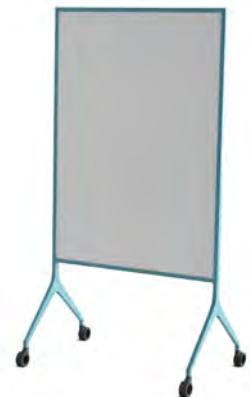
Calyx Glass

Number	Size (HxW)	Weight	Price
SW-6036-MG-MG	60" x 36"	105 lbs.	\$3,690
SW-6042-MG-MG	60" x 42"	122 lbs.	\$3,950
SW-6048-MG-MG	60" x 48"	133 lbs.	\$4,130
SW-6060-MG-MG	60" x 60"	147 lbs.	\$4,670
SW-7236-MG-MG	72" x 36"	122 lbs.	\$4,220
SW-7242-MG-MG	72" x 42"	137 lbs.	\$4,460
SW-7248-MG-MG	72" x 48"	151 lbs.	\$4,670
SW-7260-MG-MG	72" x 60"	169 lbs.	\$5,260

Freight Class 85

Venue V-Leg Mobile

The Venue V-Leg double-sided mobile has an upright design with board surface starting approximately 18" from the floor. Available in your choice of LCS Porcelain or Calyx Glass writing surfaces, and optional acoustic and fabric wrapped TacPads. 60" or 72" height and widths in 36", 42", 48", and 60". Comes with 2 locking and 2 non-locking Hubless Casters for easy mobility. Standard matte color options on page 24. Optional tackable surfaces available.



LCS Porcelain

Number	Size (HxW)	Weight	Price
VN-V-6036-MB-MB	60" x 36"	86 lbs.	\$2,340
VN-V-6042-MB-MB	60" x 42"	91 lbs.	\$2,423
VN-V-6048-MB-MB	60" x 48"	97 lbs.	\$2,475
VN-V-6060-MB-MB	60" x 60"	108 lbs.	\$2,631
VN-V-7236-MB-MB	72" x 36"	92 lbs.	\$2,610
VN-V-7242-MB-MB	72" x 42"	98 lbs.	\$2,621
VN-V-7248-MB-MB	72" x 48"	105 lbs.	\$2,631
VN-V-7260-MB-MB	72" x 60"	118 lbs.	\$3,068

Freight Class 85

Calyx Glass

Number	Size (HxW)	Weight	Price
VN-V-6036-MG-MG	60" x 36"	116 lbs.	\$3,410
VN-V-6042-MG-MG	60" x 42"	136 lbs.	\$3,650
VN-V-6048-MG-MG	60" x 48"	142 lbs.	\$3,850
VN-V-6060-MG-MG	60" x 60"	150 lbs.	\$4,340
VN-V-7236-MG-MG	72" x 36"	128 lbs.	\$3,950
VN-V-7242-MG-MG	72" x 42"	150 lbs.	\$4,180
VN-V-7248-MG-MG	72" x 48"	158 lbs.	\$4,390
VN-V-7260-MG-MG	72" x 60"	170 lbs.	\$4,950

Freight Class 85

Calyx Acoustic TacPads

Number	Size (HxW)	Weight	Price
GS-TP-2714	27" x 14"	1.5 lbs.	\$279
GS-TP-1409	14" x 9"	.5 lb.	\$208

Calyx Fabric Wrapped TacPads

Number	Size (HxW)	Weight	Price
GS-TP-1409-EW	14" x 9"	1 lb.	\$207
GS-TP-2714-EW	27" x 14"	3 lbs.	\$277

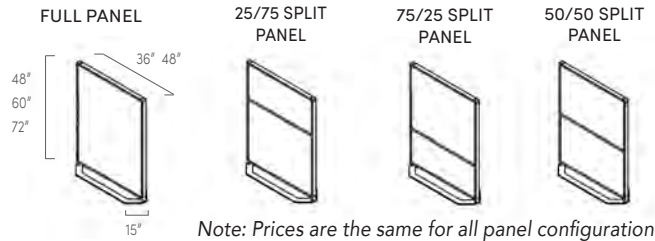
Venue T-Leg Mobile

The Venue T-Leg double-sided mobile has a lower profile design with board surface starting approximately 10" from the floor for convenient nesting. Available in full or split panels with in your choice of LCS Porcelain or Calyx Glass writing surfaces, and optional acoustic and fabric wrapped TacPads. 60" or 72" height and widths in 36", 42", 48", and 60". Comes with 2 locking and 2 non-locking Hubless Casters for easy mobility. Standard matte color options on page 24. Optional tackable surfaces available.



Venue Space Creator

Venue Space Creators are available in your choice of LCS Porcelain or Calyx Glass writing surfaces, and Calyx Acoustic Panels in two widths - 36" and 48"; three heights - 48", 60" and 72" panel configurations in full, 25/75 split, 75/25 split, and 50/50 split panels. Standard matte color options on page 24. See Acoustic colors on page 27.



LCS Porcelain

Number	Size (HxW)	Weight	Price
VN-T-6036-MB-MB	60" x 36"	92 lbs.	\$2,350
VN-T-6042-MB-MB	60" x 42"	98 lbs.	\$2,360
VN-T-6048-MB-MB	60" x 48"	105 lbs.	\$2,475
VN-T-6060-MB-MB	60" x 60"	118 lbs.	\$2,790
VN-T-7236-MB-MB	72" x 36"	98 lbs.	\$2,400
VN-T-7242-MB-MB	72" x 42"	105 lbs.	\$2,548
VN-T-7248-MB-MB	72" x 48"	113 lbs.	\$2,520
VN-T-7260-MB-MB	72" x 60"	128 lbs.	\$2,980

Freight Class 85

Calyx Glass

Number	Size (HxW)	Weight	Price
VN-T-6036-MG-MG	60" x 36"	128 lbs.	\$3,710
VN-T-6042-MG-MG	60" x 42"	150 lbs.	\$3,910
VN-T-6048-MG-MG	60" x 48"	158 lbs.	\$4,100
VN-T-6060-MG-MG	60" x 60"	170 lbs.	\$4,720
VN-T-7236-MG-MG	72" x 36"	140 lbs.	\$4,130
VN-T-7242-MG-MG	72" x 42"	164 lbs.	\$4,320
VN-T-7248-MG-MG	72" x 48"	174 lbs.	\$4,815
VN-T-7260-MG-MG	72" x 60"	190 lbs.	\$5,470

Freight Class 85

Calyx Acoustic TacPads

Number	Size (HxW)	Weight	Price
GS-TP-2714	27" x 14"	1.5 lbs.	\$279
GS-TP-1409	14" x 9"	.5 lb.	\$208

Calyx Fabric Wrapped TacPads

Number	Size (HxW)	Weight	Price
GS-TP-2714-EW	27" x 14"	3 lbs.	\$277
GS-TP-1409-EW	14" x 9"	1 lb.	\$207

LCS Porcelain and Acoustic

Number	Size (HxW)	Weight	Price
VN-SC-4848-16T28B-MB-GS	48" x 48"	90 lbs.	\$3,925
VN-SC-4848-28T16B-MB-GS	48" x 48"	90 lbs.	\$3,839
VN-SC-6036-28T28B-MB-GS	60" x 36"	80 lbs.	\$4,105
VN-SC-6048-28T28B-MB-GS	60" x 48"	106 lbs.	\$4,156
VN-SC-7236-40T28B-MB-GS	72" x 36"	92 lbs.	\$4,141
VN-SC-7236-28T40B-MB-GS	72" x 36"	92 lbs.	\$4,050
VN-SC-7248-40T28B-MB-GS	72" x 48"	122 lbs.	\$4,230
VN-SC-7248-28T40B-MB-GS	72" x 48"	122 lbs.	\$4,352

Freight Class 85

Calyx Glass and Acoustic

Number	Size (HxW)	Weight	Price
VN-SC-4848-16T28B-MG-GS	48" x 48"	106 lbs.	\$4,703
VN-SC-4848-28T16B-MG-GS	48" x 48"	106 lbs.	\$4,800
VN-SC-6036-28T28B-MG-GS	60" x 36"	95 lbs.	\$4,650
VN-SC-6048-28T28B-MG-GS	60" x 48"	126 lbs.	\$5,009
VN-SC-7236-40T28B-MG-GS	72" x 36"	110 lbs.	\$5,226
VN-SC-7236-28T40B-MG-GS	72" x 36"	110 lbs.	\$4,905
VN-SC-7248-40T28B-MG-GS	72" x 48"	146 lbs.	\$5,600
VN-SC-7248-28T40B-MG-GS	72" x 48"	146 lbs.	\$5,500

Freight Class 85

Calyx Acoustic

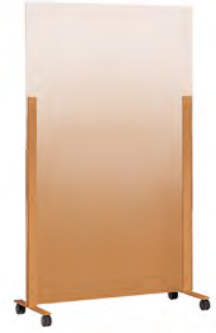
Number	Size (HxW)	Weight	Price
VN-SC-4848-16T28B-GS-GS	48" x 48"	74 lbs.	\$3,805
VN-SC-4848-28T16B-GS-GS	48" x 48"	74 lbs.	\$3,805
VN-SC-6036-28T28B-GS-GS	60" x 36"	65 lbs.	\$4,065
VN-SC-6048-28T28B-GS-GS	60" x 48"	86 lbs.	\$4,115
VN-SC-7236-40T28B-GS-GS	72" x 36"	74 lbs.	\$4,366
VN-SC-7236-28T40B-GS-GS	72" x 36"	74 lbs.	\$4,366
VN-SC-7248-40T28B-GS-GS	72" x 48"	98 lbs.	\$4,404
VN-SC-7248-28T40B-GS-GS	72" x 48"	98 lbs.	\$4,404

Freight Class 85

Mina Markerboard and Space Creators

Mina Mobile

Mina Mobile's frameless board is supported by sleek extended feet on each side for a truly minimalist design. Panels are double sided with option to choose from both writing surfaces in LCS Porcelain or Calyx Glass; or both tack surfaces in Calyx Acoustic or fabric wrapped. Comes with 2 locking and 2 non-locking casters. Sizes available in 60" or 72" height with 36" or 42" width.



Writing Surfaces

LCS Porcelain

Number	Size (HxW)	Weight	Price
MI-MM-6036-LCS	60" x 36"	81 lbs.	\$2,905
MI-MM-6042-LCS	60" x 42"	90 lbs.	\$2,916
MI-MM-7236-LCS	72" x 36"	92 lbs.	\$3,130
MI-MM-7242-LCS	72" x 42"	104 lbs.	\$3,141

Magnetic Glass

Number	Size (HxW)	Weight	Price
MI-MM-6036-MG	60" x 36"	85 lbs.	\$4,656
MI-MM-6042-MG	60" x 42"	95 lbs.	\$4,867
MI-MM-7236-MG	72" x 36"	96 lbs.	\$4,944
MI-MM-7242-MG	72" x 42"	108 lbs.	\$5,194

Non-Magnetic Glass

Number	Size (HxW)	Weight	Price
MI-MM-6036-PGB	60" x 36"	85 lbs.	\$4,483
MI-MM-6042-PGB	60" x 42"	95 lbs.	\$4,675
MI-MM-7236-PGB	72" x 36"	96 lbs.	\$4,733
MI-MM-7242-PGB	72" x 42"	108 lbs.	\$4,963

Tack Surfaces

Calyx Acoustic

Number	Size (HxW)	Weight	Price
MI-MM-6036-AC	60" x 36"	50 lbs.	\$3,295
MI-MM-6042-AC	60" x 42"	55 lbs.	\$3,304
MI-MM-7236-AC	72" x 36"	56 lbs.	\$3,494
MI-MM-7242-AC	72" x 42"	61 lbs.	\$3,504

Fabric Wrapped

Number	Size (HxW)	Weight	Price
MI-MM-6036-TB	60" x 36"	50 lbs.	\$3,315
MI-MM-6042-TB	60" x 42"	55 lbs.	\$3,324
MI-MM-7236-TB	72" x 36"	56 lbs.	\$3,515
MI-MM-7242-TB	72" x 42"	61 lbs.	\$3,524

Mina Space Creator

Mina Space Creator's frameless slim design allows more workable space with the panel of your choice.



Writing Surfaces

LCS Porcelain

Number	Size (HxW)	Weight	Price
MI-SC-6036-LCS	60" x 36"	81 lbs.	\$3,304
MI-SC-6042-LCS	60" x 42"	90 lbs.	\$3,494
MI-SC-7236-LCS	72" x 36"	92 lbs.	\$3,504
MI-SC-7242-LCS	72" x 42"	104 lbs.	\$3,604

Magnetic Glass

Number	Size (HxW)	Weight	Price
MI-SC-6036-MG	60" x 36"	85 lbs.	\$4,598
MI-SC-6042-MG	60" x 42"	95 lbs.	\$4,819
MI-SC-7236-MG	72" x 36"	96 lbs.	\$4,877
MI-SC-7242-MG	72" x 42"	108 lbs.	\$5,146

Non-Magnetic Glass

Number	Size (HxW)	Weight	Price
MI-SC-6036-PGB	60" x 36"	85 lbs.	\$4,416
MI-SC-6042-PGB	60" x 42"	95 lbs.	\$4,618
MI-SC-7236-PGB	72" x 36"	96 lbs.	\$4,666
MI-SC-7242-PGB	72" x 42"	108 lbs.	\$4,906

Tack Surfaces

Calyx Acoustic

Number	Size (HxW)	Weight	Price
MI-SC-6036-AC	60" x 36"	50 lbs.	\$3,135
MI-SC-6042-AC	60" x 42"	55 lbs.	\$3,145
MI-SC-7236-AC	72" x 36"	56 lbs.	\$3,345
MI-SC-7242-AC	72" x 42"	61 lbs.	\$3,354

Fabric Wrapped

Number	Size (HxW)	Weight	Price
MI-SC-6036-TB	60" x 36"	50 lbs.	\$3,155
MI-SC-6042-TB	60" x 42"	55 lbs.	\$3,165
MI-SC-7236-TB	72" x 36"	56 lbs.	\$3,365
MI-SC-7242-TB	72" x 42"	61 lbs.	\$3,374

Connect X2 Mobiles

Connect X2 Full Height Mobile

Available in your choice of LCS Porcelain enamel steel or Calyx Glass writing surface in five widths - 30", 36", 42", 48" and 60". Unit is approx. 72" tall; full height markerboard. 2 locking and 2 non-locking casters. Ganging option available.



Full Height LCS Porcelain Mobile

Number	Size (HxW)	Weight	Price
X2-MM-7230-MB-MB	72" x 30"	110 lbs.	\$2,360
X2-MM-7236-MB-MB	72" x 36"	128 lbs.	\$2,475
X2-MM-7242-MB-MB	72" x 42"	147 lbs.	\$2,750
X2-MM-7248-MB-MB	72" x 48"	165 lbs.	\$2,850
X2-MM-7260-MB-MB	72" x 60"	200 lbs.	\$3,214

Freight Class 85

Full Height Calyx Glass Mobile

Number	Size (HxW)	Weight	Price
X2-MM-7230-MG-MG	72" x 30"	140 lbs.	\$3,806
X2-MM-7236-MG-MG	72" x 36"	160 lbs.	\$3,929
X2-MM-7242-MG-MG	72" x 42"	205 lbs.	\$4,372
X2-MM-7248-MG-MG	72" x 48"	230 lbs.	\$5,831
X2-MM-7260-MG-MG	72" x 60"	290 lbs.	\$6,831

Freight Class 85

NOTE: Powder coat option additional \$158.

Connect X2 Mobiles double-sided surface is available with any combination of markerboard, tackboard, and/or glass markerboard. Call for pricing.

Edify Mobile

Edify Mobile

Edify Mobile features a sturdy steel frame with tray, and optional bin or shelf available in vibrant color options. Interchangeable lapboards are also available for added collaboration. Available in LCS Porcelain writing surface; 2 locking and 2 non-locking casters. Standard height is 72" from the floor.



Edify Mobile and Options

Number	Size (HxW)	Weight	Price
EM-MB-MB-7236	72" x 36"	80 lbs.	\$2,101
EM-MB-MB-7248	72" x 48"	108 lbs.	\$2,132
EM-36-BIN	36" width	19 lbs.	ADD \$470
EM-48-BIN	48" width	25 lbs.	ADD \$500
EM-36-SHF	36" width	9 lbs.	ADD \$239
EM-48-SHF	48" width	12 lbs.	ADD \$254
EM-LAPBOARD-4PK	12" x 10"	5 lbs.	ADD \$200

Freight Class 85

Connect X2 Partial Height Mobile

Available in LCS Porcelain enamel steel in two widths - 36" and 48". Unit is approx. 72" tall; markerboard is 36" high. 2 locking and 2 non-locking casters.



Partial Height LCS Porcelain Mobile

Number	Size (HxW)	Weight	Price
X2-MMN-7236-MB-MB	72" x 36"	80 lbs.	\$1,830
X2-MMN-7248-MB-MB	72" x 48"	95 lbs.	\$1,882

Freight Class 85

Connect X2 Combination Markerboard/Tackboard Mobile

Available with LCS Porcelain on top and Calyx Cork on bottom (specify cork color). Specify height for markerboard and tack surface. Available in two widths - 36" and 48". Unit is 72" tall. Locking and non-locking casters.



LCS Porcelain Markerboard/Tackboard Mobile

Number	Size (HxW)	Weight	Price
X2-MMNT-7236-MB-MB	72" x 36"	116 lbs.	\$2,215
X2-MMNT-7248-MB-MB	72" x 48"	130 lbs.	\$2,546

Freight Class 85

Connect X2 3 Caster Mobile

Connect X2 Series Double-Sided 3 Caster Mobile markerboards are available in LCS Porcelain enamel steel writing surface in two widths - 36" and 48". Unit is approx. 72" tall; full height markerboard. Locking and non-locking casters. Designed for use between work stations.



LCS Porcelain 3 Caster Mobile

Number	Size (HxW)	Weight	Price
X2-MM3-7236-MB-MB	72" x 36"	128 lbs.	\$2,398
X2-MM3-7248-MB-MB	72" x 48"	165 lbs.	\$2,439

Freight Class 85

Utility A-Frame Mobile

A-Frame Utility Mobile Markerboard features full-length LCS Porcelain enamel steel writing surface on both sides. Unit has black powder coat finish aluminum frame. Display rail at top has hooks for use with flip charts. Markerboard is 66"H x 30"W.



Number	Size (HxW)	Weight	Price
147	72" x 30"	120 lbs.	\$2,774

Freight Class 85

Connect X2 Space Creators

Connect X2 Space Creator

Connect Space Creators panels are tiled to create a custom markerboard and/or tack surface. Furnished with two pie-shaped feet and a link for joining two or more Space Creators together. LCS Porcelain writing surface or standard Guilford, Carnegie or Maharam fabric tack surfaces. For configurations using a combination of materials from panel-to-panel or side-to-side, use the price of the higher material. All Space Creators are 72" high and come in 30", 36", 48" and 60" widths.

NOTE: Powder coat option additional \$158.



Fabric 2 sides

72" high x 30" wide

No. of Tiles	Number	Weight	Price		
			Guilford -FG-FG	Carnegie -FC-FC	Maharam -FM-FM
1-tile	X2-SC-7230-1-	87 lbs.	\$2,149	\$2,791	\$2,570
2-tiles	X2-SC-7230-2-	87 lbs.	\$2,230	\$2,871	\$2,650
3-tiles	X2-SC-7230-3-	87 lbs.	\$2,311	\$2,951	\$2,730
4-tiles	X2-SC-7230-4-	87 lbs.	\$2,392	\$3,067	\$2,800

72" high x 36" wide

No. of Tiles	Number	Weight	Price		
			Guilford -FG-FG	Carnegie -FC-FC	Maharam -FM-FM
1-tile	X2-SC-7236-1-	99 lbs.	\$2,171	\$2,850	\$2,650
2-tiles	X2-SC-7236-2-	99 lbs.	\$2,251	\$2,930	\$2,730
3-tiles	X2-SC-7236-3-	99 lbs.	\$2,335	\$3,010	\$2,800
4-tiles	X2-SC-7236-4-	99 lbs.	\$2,430	\$3,090	\$2,880

72" high x 48" wide

No. of Tiles	Number	Weight	Price		
			Guilford -FG-FG	Carnegie -FC-FC	Maharam -FM-FM
1-tile	X2-SC-7248-1-	123 lbs.	\$2,367	\$2,910	\$2,750
2-tiles	X2-SC-7248-2-	123 lbs.	\$2,448	\$2,990	\$2,830
3-tiles	X2-SC-7248-3-	123 lbs.	\$2,529	\$3,070	\$2,910
4-tiles	X2-SC-7248-4-	123 lbs.	\$2,610	\$3,150	\$2,990

For Guilford fabrics, specify -FG; for Carnegie, -FC; and for Maharam, -FM. See page 26 for material options. Be sure to specify color required.

All Freight Class 70

LCS Porcelain 2 sides

72" high x 30" wide

No. of Tiles	Number	Weight	Price
1-tile	X2-SC-7230-1-MB-MB	117 lbs.	\$2,139
2-tiles	X2-SC-7230-2-MB-MB	117 lbs.	\$2,213
3-tiles	X2-SC-7230-3-MB-MB	117 lbs.	\$2,293
4-tiles	X2-SC-7230-4-MB-MB	117 lbs.	\$2,409

72" high x 36" wide

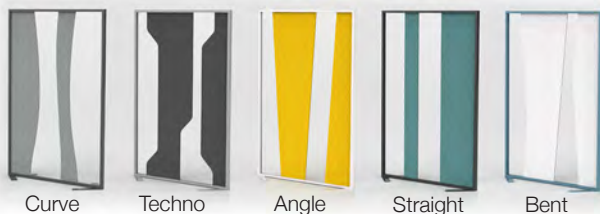
No. of Tiles	Number	Weight	Price
1-tile	X2-SC-7236-1-MB-MB	135 lbs.	\$2,150
2-tiles	X2-SC-7236-2-MB-MB	135 lbs.	\$2,230
3-tiles	X2-SC-7236-3-MB-MB	135 lbs.	\$2,288
4-tiles	X2-SC-7236-4-MB-MB	135 lbs.	\$2,410

72" high x 48" wide

No. of Tiles	Number	Weight	Price
1-tile	X2-SC-7248-1-MB-MB	171 lbs.	\$2,178
2-tiles	X2-SC-7248-2-MB-MB	171 lbs.	\$2,299
3-tiles	X2-SC-7248-3-MB-MB	171 lbs.	\$2,685
4-tiles	X2-SC-7248-4-MB-MB	171 lbs.	\$2,739

Ripple Space Dividers

A stylish space divider using both Calyx Acoustic and Clear Acrylic surfaces. Featuring a low profile trim, to-the-floor privacy and the ability to create and reconfigure space with decorative graphic panels. Available in 5 styles and 8 size options.



No. of Panels	Number	Size	Price
4	RD-RIP1-7236-4P	72" x 36"	\$2,417
4	RD-RIP1-7242-4P	72" x 42"	\$2,438
4	RD-RIP1-7248-4P	72" x 48"	\$2,555
5	RD-RIP1-7260-5P	72" x 60"	\$2,760
4	RD-RIP1-6036-4P	60" x 36"	\$2,375
4	RD-RIP1-6042-4P	60" x 42"	\$2,396
4	RD-RIP1-6048-4P	60" x 48"	\$2,514
5	RD-RIP1-6060-5P	60" x 60"	\$2,719

Specify the following product numbers for the 5 styles:

RD-RIP1- for Curve, RD-RIP2- for Techno, RD-RIP3- for Angle, RD-RIP4- for Straight, RD-RIP5- for Bent

Aceno Room Divider

Aceno Room Dividers are the lightest panels that can be easily moved and mounted from the floor in a steady metal base. Panels are composed of CIS writing surface with Calyx Acoustic core reveal. Panel sizes available in three heights - 48", 55", and 68", and two widths - 28" and 36". CIS surface comes in standard white with 4 optional vibrant colors.



Aceno Panels

Number	Size (HxW)	Weight	Price
ACP-4828	48" x 28"	10 lbs.	\$800
ACP-4836	48" x 36"	12 lbs.	\$926
ACP-5528	55" x 28"	11 lbs.	\$1,278
ACP-5536	55" x 36"	14 lbs.	\$1,285
ACP-6828	68" x 28"	13 lbs.	\$1,607
ACP-6836	68" x 36"	17 lbs.	\$1,614
Color Option	ADD \$13 per sf		

Freight Class 85

Aceno Base

Number	Size (HxWxD)	Weight	Price
ACB	10-1/4" x 15" x 15"	24 lbs.	\$648

Aceno Track System

Aceno Track System comes standard in satin anodize trim and is available in 10 standard matte finish colors.

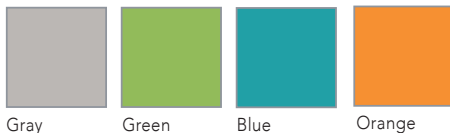


Optional back panel is available in Calyx Glass or LCS porcelain; no back panel required for functionality. Comes in three lengths - 48", 72", or 96".

Aceno Track Rails

Number	Size (W)	Weight	Price
ACT-04	48"	13 lbs.	\$444
ACT-06	72"	20 lbs.	\$597
ACT-08	96"	26 lbs.	\$761

OPTIONAL CIS COLORS



Aceno Storage Cart

Aceno Cart is constructed in solid wood frame to store the Aceno panels and to use as a mobile markerboard. The cart can store up to 8 panels and is moveable with round cut-out handles. Comes with 2 locking and 2 non-locking casters. Calyx Acoustic is available as option on cart side panels.



Aceno Cart

Number	Size (HxWxD)	Weight	Price
ACM	45" x 40" x 21"	125 lbs.	\$4,040

Nimbus Multi-Purpose Mobile

Multi-purpose markerboard mobile featuring our best in class LCS Porcelain writing surface or tack surface, and center storage space to keep accessories for collaboration on the move. Center shelves accessible from both sides with cord management. Comes with 2 locking and 2 non-locking casters.



Nimbus Cart

Number	Size (HxWxD)	Weight	Price
NIM	60" x 40" x 19"	110 lbs.	\$4,445

Large Format Glass Marker Systems

Large Format Glass Marker System

Extremely durable, virtually maintenance free, Large Format Glass Marker Systems are made of low-iron tempered glass for exceptional clarity. Your choice of 10 standard colors or 180 optional colors. Available in heights up to 10'. Price includes narrow face aluminum trim for top and bottom and T-molding that can be used as a glass spacer and/or to protect edge of glass when positioning two or more panels next to each other.

Calyx Glass

Number	Size (H x W)	Weight	Price
MGMW-64	6' x 4'	192 lbs.	\$2,100
MGMW-84	8' x 4'	256 lbs.	\$2,760
MGMW-104	10' x 4'	320 lbs.	\$3,450

Freight Class 70



Large Format Porcelain Marker Systems

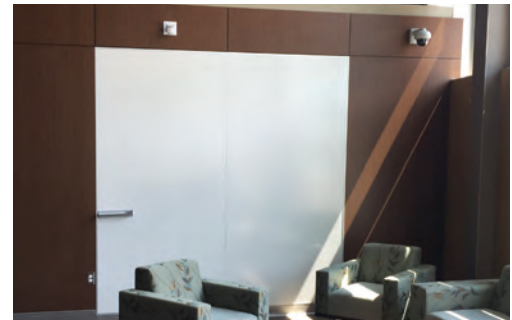
Large Format Porcelain Marker System

Large Format Porcelain Marker Systems provide endless possibilities for capturing ideas as they flow. A writing wall ideal for brainstorming and presentations; magnetic receptive wall designed for displaying notices, photos, banners, and samples in offices, board rooms, conference rooms, etc. Large Format Marker Systems, with an LCS Porcelain steel low gloss surface, can be used for projection. Butt panels together for a continuous writing surface. Large Format Marker Systems can be designed to cover entire walls, floor-to-ceiling.

LCS Porcelain

Number	Description	Price/sq.ft.
MW1	LCS steel skins with matched butt joints	\$18
MW2	LCS panels mounted on 7/16" MDF with moisture barrier back and alum spline joints, 1 1/8" face trim	\$37
MW3	LCS panels mounted on 7/16" MDF with moisture barrier back and alum spline joints, 3/4" face trim	\$33

Freight Class 70



Ask about Large Format Marker System installations using Calyx 272A snap-on trim and clips.

Tack Walls

Tack Wall

Tack Walls provide endless possibilities for capturing ideas as they flow. A tack wall designed for displaying notices, photos, banners, and samples in offices, board rooms, conference rooms, etc. Select Tack Wall material and color from standard Guilford, Carnegie and Maharam fabrics. Tack Walls can be designed to cover entire walls, floor-to-ceiling.

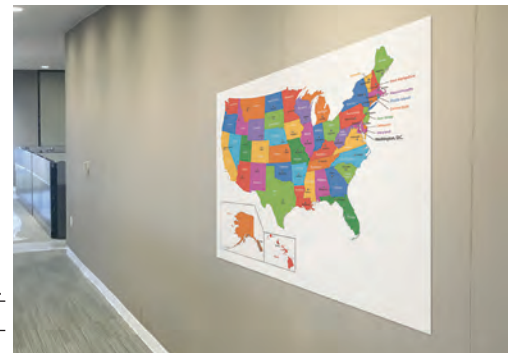
Tack Wall with Designer Fabric

Number	Description	Price/sq.ft.
TW1D	Edge-wrapped	\$22
TW2D	Fabric covered trim	\$27.50

Tack Wall with Calyx Cork

Number	Description	Price/sq.ft.
TW2C	Fabric covered trim	\$33

Freight Class 70



Accessories

Dry-Erase Markers

Four broad-tipped markers - red, blue, green and black.



LCS673-4	1 lb.	\$20
----------	-------	------

Freight Class 100

Dry-Erase Cloth

12" x 12" Microfiber eraser cloth. Erases cleanly with no smearing. Designed to reduce marker residue build-up.



ECM227E	1 cloth	.5 lb.	\$9
ECM227D	1 dozen cloths	2 lbs.	\$89.48

Freight Class 100

Dry-Erase Kit

Four dry-erase markers and one Microfiber cloth.

LCS668-4	.5 lb.	\$27
----------	--------	------

Freight Class 100

Magnetic Eraser

The black felt eraser surface cleans your board with ease. Strong rare earth magnets hold it on the board. 4-1/2" long, 2-1/8" wide and 7/8" thick.



MGM-ME1	.5 lb.	\$31
---------	--------	------

Freight Class 70

Markerboard Cleaner

Cleans and restores LCS Porcelain enamel steel markerboard surfaces. 8 oz. pump spray.



LCS683	1 lb.	\$13.50
--------	-------	---------

Freight Class 70

Rare Earth Magnets

Calyx rare earth magnets, designed specifically for use on magnetic glass boards are 1.29" square and .44" thick. Colors available in black, white and gray.



MGM-REMSQ-B, -W, -G	1 oz.	\$22
---------------------	-------	------

Freight Class 70

Marker Caddy

Sculpted plastic magnetic holder with rare earth magnets. Holds up to 8 markers or two markers and one microfiber cloth or standard eraser.



MGM-MC1-S	3 1/2"h, 3 1/8"w, 1-3/4"d	.5 lb.	\$36
MGM-MC1-M	4"h, 4-1/2"w, 2-1/5"d	.5 lb.	\$39
MGM-MC1-L	4"h, 8-1/2"w, 2-2/5"d	.5 lb.	\$45

Freight Class 70

Slim Marker Caddy

Lightweight aluminum with rare earth magnet backing measures 1-3/8" H, 9" W, and 1-3/8" D. Holds 4 markers and one microfiber cloth or standard eraser. Available in satin anodize finish or 24 standard aluminum trim colors.



M-MC2	.5 lb.	\$106
M-MC2P	.5 lb.	\$110

Magnetic Aluminum Tray

Strong rare earth magnets hold this satin anodize aluminum tray in place, yet allow the flexibility to re-position when needed. Fabric-backed tray has eased corners and measures 12" long, 1-1/2" high, 3" deep and will easily hold markers and eraser.



MGM-T1	12" length	1 lb.	\$183
--------	------------	-------	-------

Freight Class 70

Magnetic Aluminum Tray

Slim satin anodized aluminum tray. 267M1 for use on porcelain surface; 267MG1 for use on glass surface



267M1	12" length	.5 lb.	\$63.50
267MG1	12" length	.5 lb.	\$137
267MG1-P	12" length	.5 lb.	\$143

Freight Class 70

Magnetic Aluminum Tray

Satin anodized aluminum tray. For use on porcelain markerboard.



264M1	12" length	1 lb.	\$79
-------	------------	-------	------

Freight Class 70

Adhesive-Backed Tray

Satin anodize aluminum tray stays in place with double-sided tape and holds markers and erasers in one permanent location. Tray is 12" long, 2-7/16" high, and 2-11/16" deep. (For both porcelain and glass boards.)

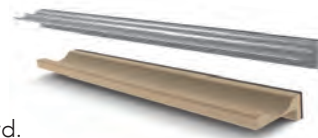


GM-Tray-1	12" length	1 lb.	\$81
-----------	------------	-------	------

Freight Class 70

Magnetic AT Trays

Available in aluminum and wood with two extra strong magnets. For use on porcelain markerboard.



AT-12-ALUM	12" length	1 lb.	\$57
AT-12-WOOD	12" length	1 lb.	\$122

Freight Class 70

Fixed Marker Tray

Concept markerboard tray per linear feet.



Number	Weight	Price
CP-TRAY-Add	.5 lb	\$12

Freight Class 70

Partition Panel Clip

Spring steel clips fit over the top of any 2" thick partitions. Small prongs fit underneath the board trim. Two each.



80	2"	.5 lb.	\$47
80-3	3"	.5 lb.	\$60

Freight Class 70

Accessories

TacPad

Tackable surface in fabric or acoustic material with rounded corners. Rare earth magnetic backing. Available in 2 sizes.

GS-TP-1409	9"h, 14"w, .13"d	.5 lb.	\$208
GS-TP-2714	14"h, 27"w, .13"d	1.5 lb.	\$279
GS-TP-1409-EW	9"h, 14"w, .13"d	1 lb.	\$207
GS-TP-2714-EW	14"h, 27"w, .13"d	3 lb.	\$277



Standard Trim Colors

Standard Matte Finish Trim Colors



Standard Aluminum Trim Colors



Also available in over 180 optional powder coat colors

Colors are produced with reasonable accuracy.

Glass Gradient Colors

Ombria Standard Colors



Ombria Color Options



Materials

Fabric Options

Guilford Bailey



Baxter Beige
GB011



Belmont Silver
GB010

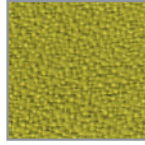


Khaki
GB012

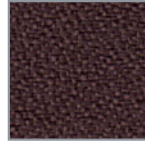


Sherman Pewter
GB024

Guilford Anchorage



Green Apple
GA087

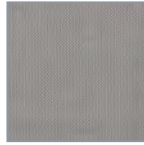


Fossil
GA093

Maharam Merit



Lynx
028



Overcast
043



Rainfall
009



Blackout
004

Maharam Meld



Seashell
012



Blonde
027



Crater
014



Knight
004

Maharam Manner



Citronella
045



Cottage
023



Dill
043



Nuance
006



Flint
004



Smoky
031



Porpoise
003



Magnetic
032

Maharam Manner



Southwest
047



Kimono
051



Oceanside
040



Valiant
052

Carnegie Nexus



Dune
CN912



Oatmeal
CN908

Carnegie Quarry



Stone Manor
CQ99

Calyx Cork Options



Mushroom
1108



Buff
1109



Fawn
1110



Tan
1100



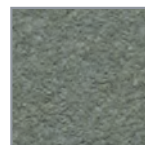
Cinnamon
1104



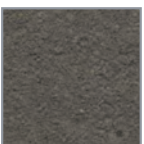
Oyster
1103



Smoke
1111



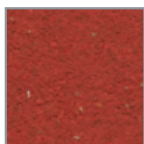
Steel Gray
1113



Graphite
1136



Black
1132



Salsa
1117



Tangerine
1118



Pineapple
1119



Lettuce
1120



Blueberry
1129

Colors are produced with reasonable accuracy.

Materials & Finishes

Acoustic Options

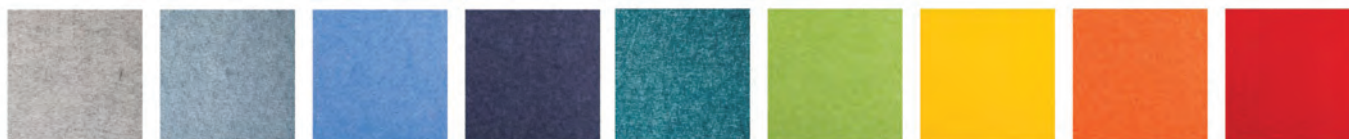
Standard Colors (in stock)



Pearl White Marble Steel Graphite Deep Sea Cayenne Moss Stone

Additional Colors (for order)

Additional Colors (for order)



Moondust Bluestone Topaz Sapphire Myrtle Pear Daisy Orange Ruby



Pewter Tiger Eye Camel Quartz Ocean Mist Black

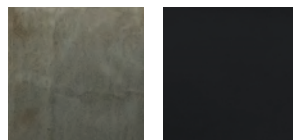
MIX Options

MIX Contemporary Base, Accent Strip & Shelf



Signal White RAL9003 Slate Grey RAL7015 Matte Black 302P

MIX Industrial Base & Shelf MIX Industrial Accent Strip



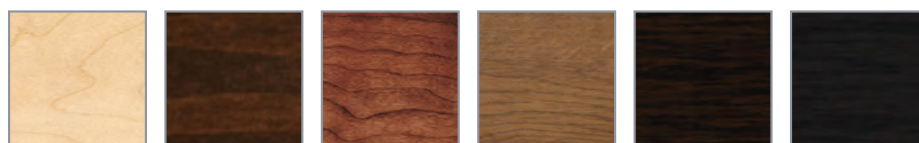
Matte Clear Matte Black 302P

MIX Wood Finish Options



Clear Vellum Driftwood Rustic

Wood Finish Options



Maple Mahogany Cherry Walnut Espresso Ebony

Custom wood finishes optional

Talk to a Calyx by
Claridge writing surface
expert today to learn
how we turn workspaces
into idea places.